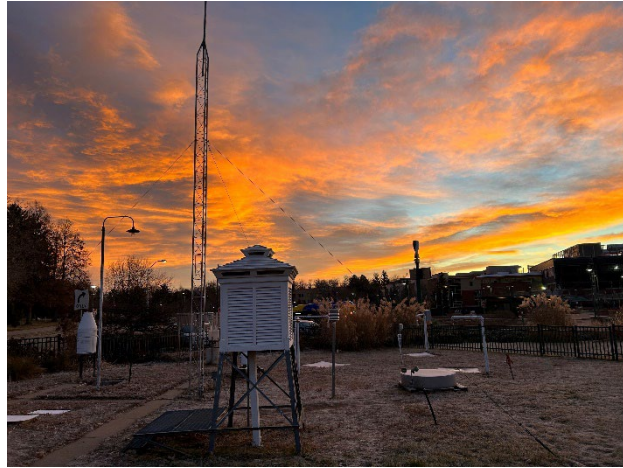


Colorado State University, Fort Collins, CO Weather Station Monthly Summary Report

Month: November
Year: 2022



Temperature:

Mean T_{\max} was 48.5°F which is 4.0° below the 1991-2020 normal for the month. This is the 36th coolest (26th percentile) in the 134-year record (1889-2022) tied with 1891 and 1983. The last November this cold or colder was 2000 with 43.1°F.

Mean T_{\min} was 20.9°F which is 5.2° below the 1991-2020 normal for the month. This is the 29th coolest (21st percentile) in the 134-year record (1889-2022), tied with 1955. The last November this cold or colder was 2000 with 19.8°F.

Mean T_{mean} was 34.7°F which is 4.6° below the 1991-2020 normal for the month. This is the 31st coolest (23rd percentile) in the 134-year record (1889-2022). The last November this cold or colder was 2000 with 31.5°F.

Fall (Sep – Nov) mean temperature was 51.0°F which is 0.3° above the normal for the season. This is the 26th warmest (81st percentile) fall on record, tied with 1939, 1988 and 2018. The last fall this warm or warmer was 2021 with 54.6°F

The maximum daily temperature for the month was 70°F and occurred on November 2, 2022.

The minimum daily temperature for the month was 4°F and occurred on November 30, 2022.

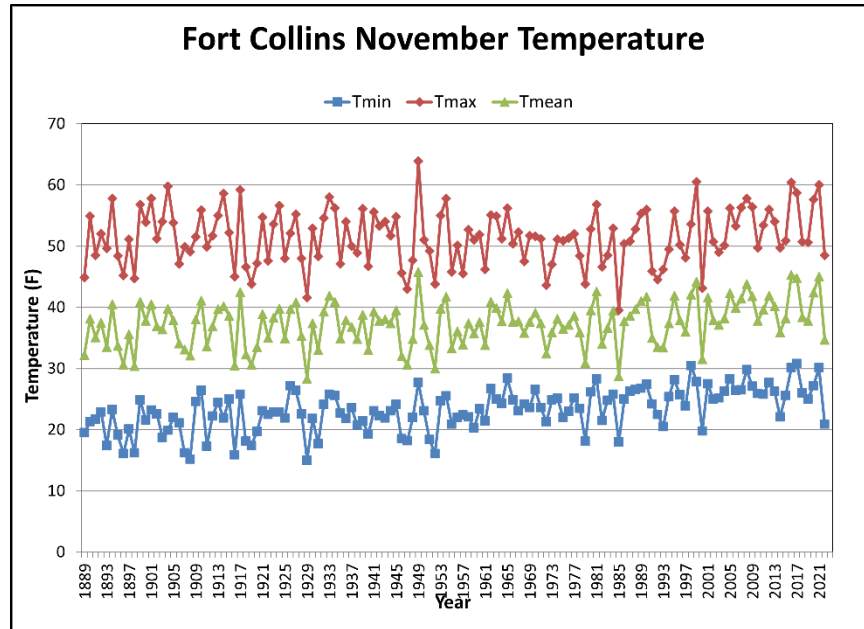


Figure 1: November temperature time series.

Misc. Temperature (record status, thresholds, etc.):

No temperature records for November 2022

Precipitation and Snowfall:

Total monthly precipitation was 0.79” which is 0.05” above the 1991-2020 normal for the month (107% of normal). This ranks as the 35th wettest (73rd percentile) in the 134-year record (1889-2022), tied with 1909 and 1956. The last November this wet or wetter was 2019 with 1.79” of precipitation.

Fall (Sep – Nov) precipitation totaled 2.34” which is 1.08” below the normal for the season (68% of normal). This ranks as the 53rd driest (39th percentile) fall on record. The last fall this dry or drier was 2021 with 1.02” of precipitation.

Total monthly snowfall was 9.2” which is 1.6” above the 1991-2020 normal for the month (121% of normal). This ranks as the 30th snowiest (77th percentile) in the 134-year record (1889-2022), tied with 1909. The last November with this much snowfall or more was 2019 with 21.7” of snowfall.

Seasonal snowfall for the start of the 2023 snow season totaled 9.4” through November. This is 3.2” below the 1991-2020 normal (74% of normal). This ranks as the 76th least snowy (56th percentile) start to a snow season in the 133-year record (1890-2022), tied with the 1983 and 1985 season. The last season to start with this little snowfall was the 2022 season (last year) with a 0.7” of snowfall.

November had 5 days with measurable precipitation (≥ 0.01 ”) and 5 days with measurable snowfall (≥ 0.1 ”).

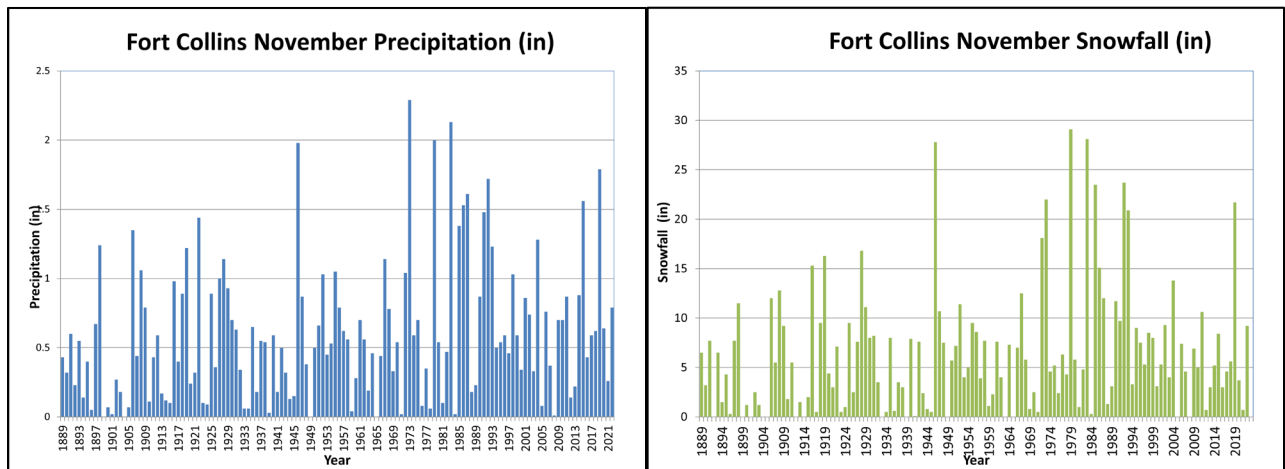


Figure 2: November precipitation (left) and snowfall (right) time series.

Misc. Precipitation (predominant type, record status, etc.):

No precipitation records for November 2022.

The highest one-day precipitation and snowfall total for November 2022 was 0.29” precipitation and 4.2” snowfall on November 29th.

Days with Snow Depth ≥ 1 inch

November had 7 days with at least 1” of snow on the ground. This compares to a normal of 4 days for November.

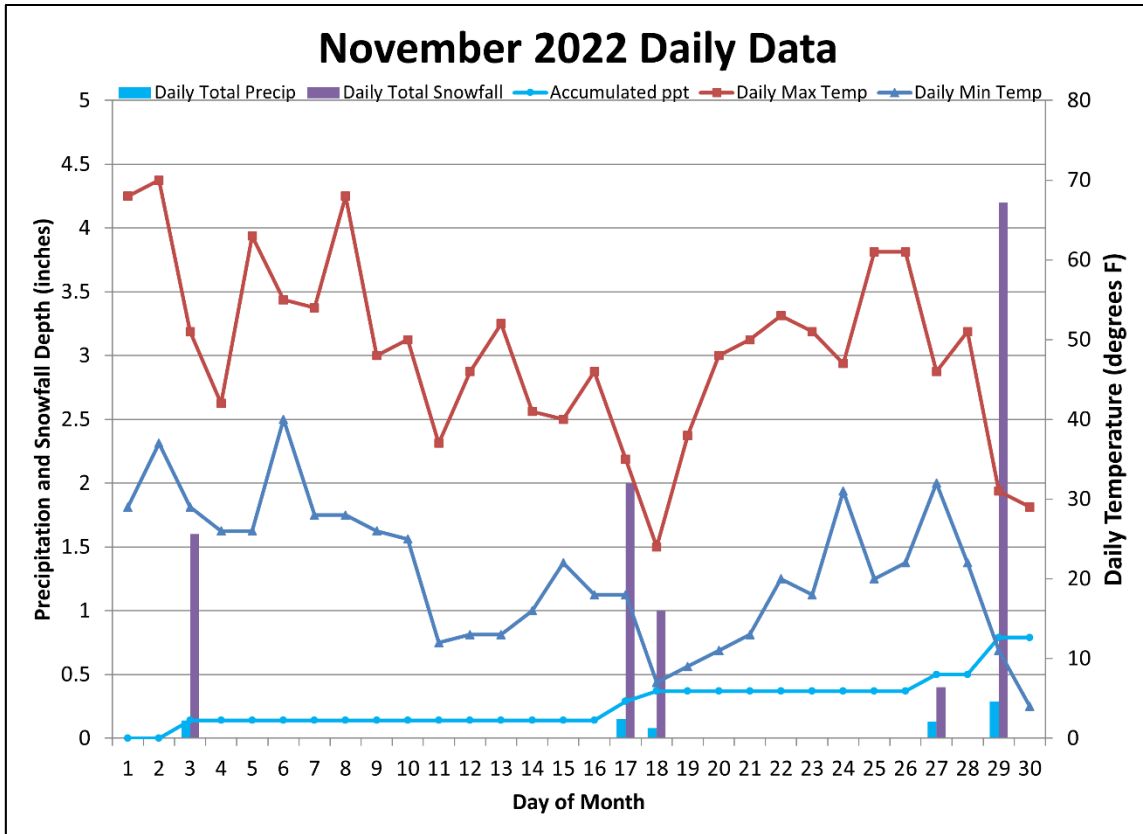


Figure 3: Daily Data for November 2022. Precipitation and temperature both show up on this graph. The y-axis on the left is for precipitation and snowfall. The y-axis on the right is for temperature.

Wind:

In November 2022 there were 12 days with maximum wind gusts ≥ 20 mph and 0 days ≥ 30 mph.

The maximum daily wind gust for the month was 26 mph and occurred on November 26, 2022, at 1:42 PM MST from 030° (NNE).

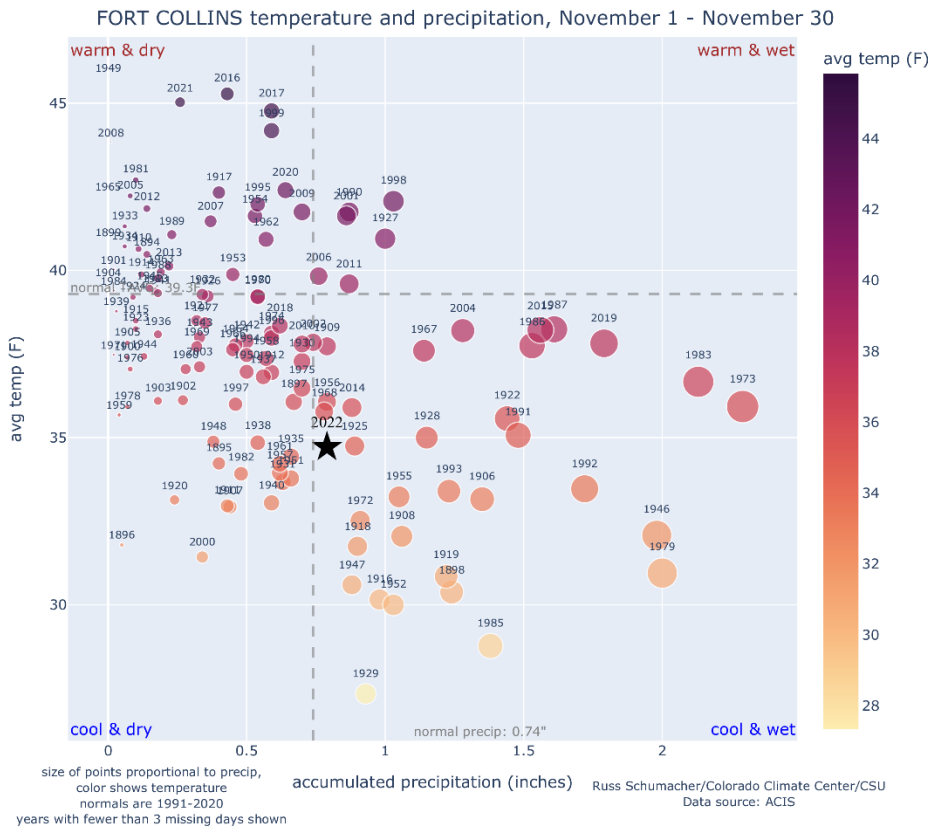
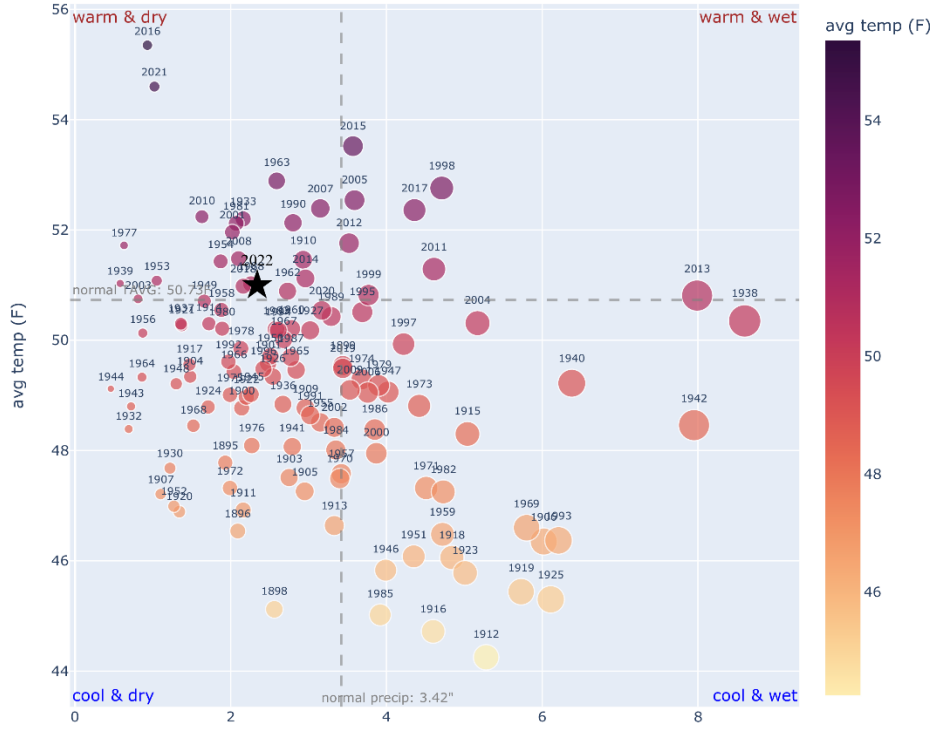


Figure 4: November (top) and fall (next page) precipitation and temperature data plot. Each dot plots monthly average temperature and precipitation at Fort Collins for the period of record. From left to right, monthly precipitation is shown on the x-axis, where the wettest years are plotted furthest to the right. Dot sizes are proportional to precipitation amounts. From bottom to top on the y-axis, average monthly temperature is shown, where the warmest years are plotted towards the top. The dots are also color coded with darker colors indicating higher temperatures. The horizontal and vertical dotted lines indicate the 1991-2020 normals. November was wetter and cooler than normal and fall was slightly warmer and drier than normal.

FORT COLLINS temperature and precipitation, September 1 - November 30



size of points proportional to precip, color shows temperature
 normals are 1991-2020
 years with fewer than 3 missing days shown

accumulated precipitation (inches) Russ Schumacher/Colorado Climate Center/CSU
 Data source: ACIS