

Colorado State University, Fort Collins, CO Weather Station Monthly Summary Report

Month: November
Year: 2015



Temperature:

Mean T_{\max} was 50.9°F which is 0.5° below the 1981-2010 normal for the month. This is the 57th coolest in the 127 year record (1889-2015). The last November this cool or cooler was 2014 with 49.7°F.

Mean T_{\min} was 25.6°F which is 0.3° below the 1981-2010 normal for the month (2.6° above the 1889-2015 average). This is the 32nd warmest in the 127 year record (1889-2015). The last November this warm or warmer was 2013 with 26.3°F.

Mean T_{mean} was 38.2°F which is 0.5° below the 1981-2010 normal for the month (1.0° above the 1889-2015 average). This is the 49th warmest in the 127 year record (1889-2015), tied with 2004. The last November this warm or warmer was 2013 with 40.2°F.

Fall (Sept - Nov) mean temperature was 53.5°F which is 3.3° above the normal for the season. This ranks as the warmest fall in the 127 year record (1889-2015), beating 1963 and 1998 with 52.8°F.

** Note: As evidence by the graphs below, Fort Collins has a very noticeable long-term warming trend, especially when looking at the minimum temperature. This is due, in part, to the large growth and development of the campus and surrounding city since the late 1950s. As a result it is fairly common now to be above the long-term “average” even when we are experiencing relatively cool weather with respect to the 1981-2010 30-year average (referred to as the climate “normal”). That was certainly the case this month with the mean and min temperatures.

The maximum daily temperature for the month was 73°F and occurred on November 3rd, 2015.

The minimum daily temperature for the month was 11°F and occurred on November 27th, 2015.

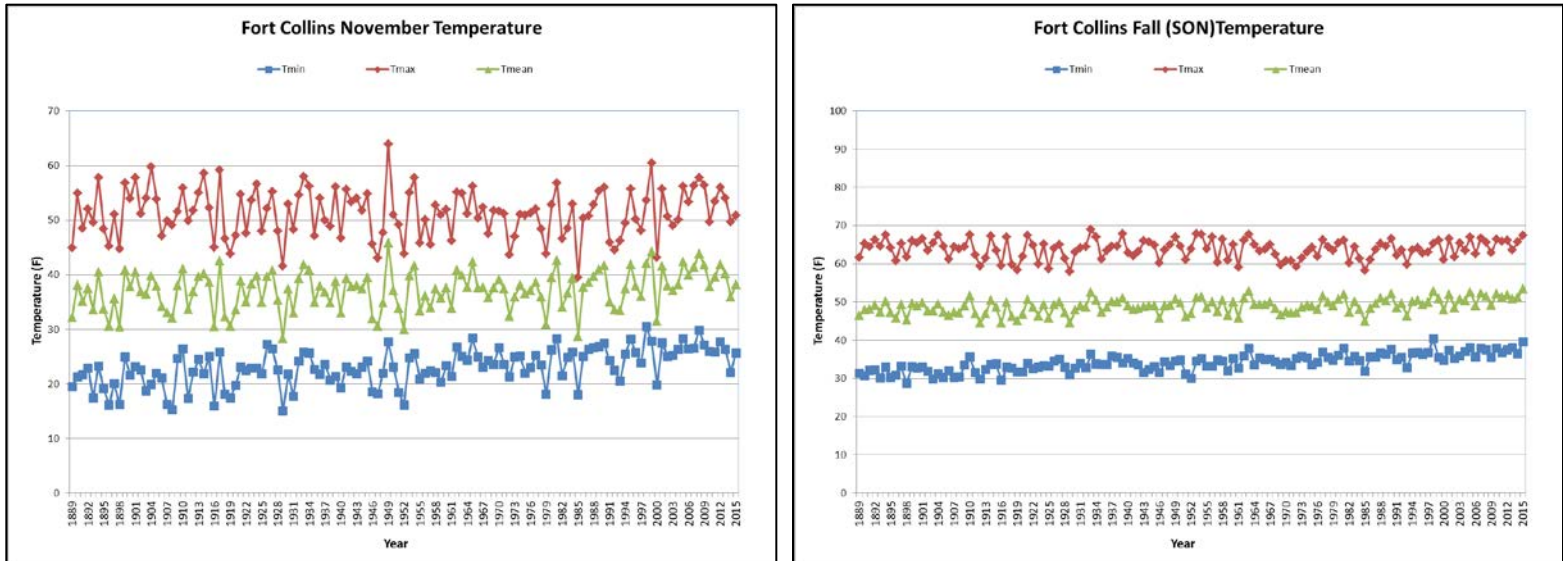


Figure 1: November (left) and Fall (right) temperature time series.

Misc. Temperature (record status, thresholds, etc.):

The first temperature of 28°F or less of this fall occurred on November 7th, 2015, with a minimum of 22°F. This is the latest this has occurred in the 127 year record (1889-2015). The previous latest 28°F or less was 1963, occurring on November 1st, when the minimum temperature was 18°F.

Precipitation and Snowfall:

Total monthly precipitation is 1.56” and was 0.80” above the 1981-2010 normal for the month (205% of normal). This ranks as the 7th wettest in the 127 year record (1889-2015). The last November this wet or wetter was 1992 with 1.72” of precipitation.

Fall (Sep - Nov) precipitation totaled 3.57” and is 0.33” above the normal for the season (110% of normal). This ranks as the 41st wettest fall in the 127 year record (1889-2015). The last fall this wet or wetter was 2013 with 7.99”.

Total monthly snowfall was 8.4” and is 0.2” below the 1981-2010 normal for the month (98% of normal). This was 2.0” above the 1889-2015 average for the month (131% of average). This was the 33rd snowiest November in the 127 year record (1889-2015). The last November with this much snowfall was 2011 with 10.6” of snowfall.

Seasonal snowfall for the 2016 snow season is 8.4” and is 4.7” below the 1981-2010 normal for the season through November (64% of normal). This ranks as the 67th least snowy in the 127 year record (1890-2016). The last season to start with this little snowfall was the 2015 season with 5.2” by the end of November 2014.

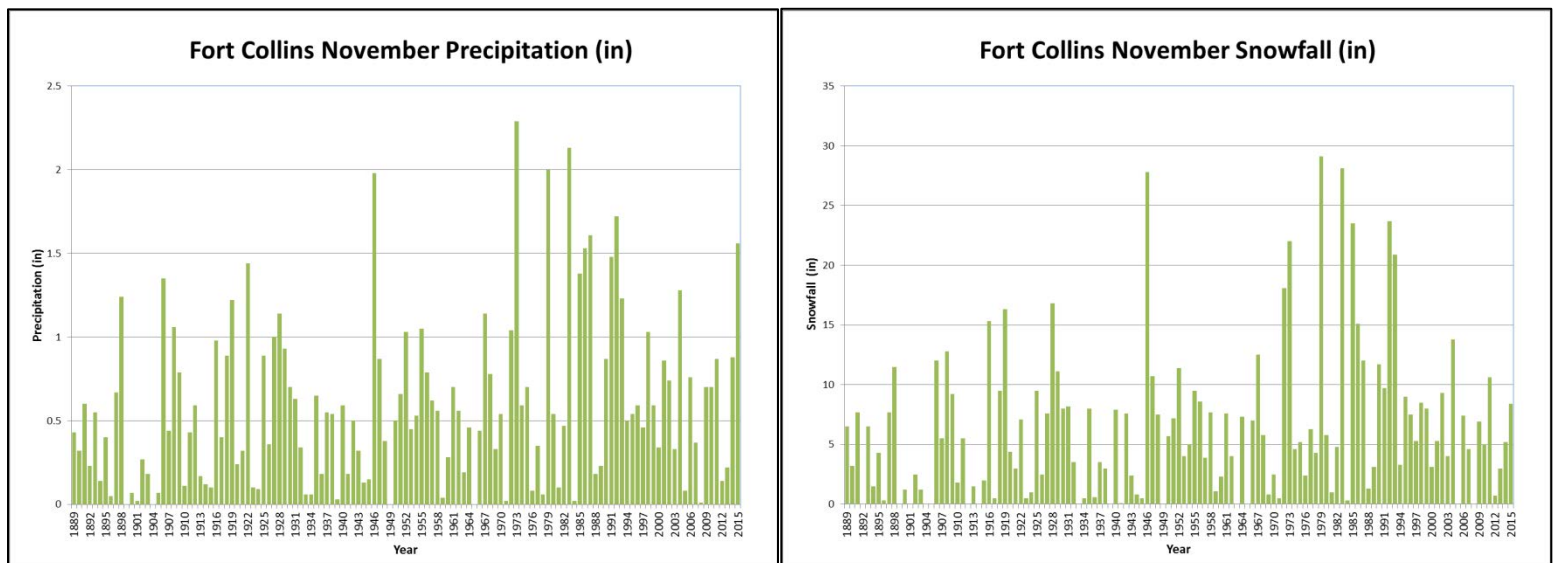


Figure 2: November precipitation (left) and snowfall (right) time series.

Misc. Precipitation (predominant type, record status, etc.):

Highest Daily Precipitation:

5th November 2015: The daily precipitation of 0.64" set a new record highest daily precipitation. The previous record for this day was 0.49" and was set in 1979.

Days with Precipitation:

7 days with measureable precipitation (0.01" or greater)

14 days with a trace of precipitation or greater

5 days with measurable snowfall (0.1" or greater)

10 days with snowfall of a trace or greater

First Snowfall:

The first measurable snowfall of the 2016 snow season occurred on November 11th, 2015, with 2.5 inches of new snow depth. This is the 29th latest first measurable snowfall. The last time the first measurable snowfall occurred this late or later was last year, 2014, and occurred on November 11th, with 5.2". This was the 4th time the first measurable snowfall of the season occurred on November 11th.

The first trace of snow this season occurred on November 6th.

Wind:

In November 2015 there were 7 days with maximum wind gusts \geq 20 mph and 2 days \geq 30 mph.

The maximum daily wind gust for the month was 39 mph and occurred 3 times on November 18th, 2015 at 8:00 MST from 290°, 10:50 MST from 280° and 12:50 MST from 300°.

Evaporation:

Pan evaporation for November 2015 through the 16th was 1.01". The pan was shut down for the season on the 16th.