

Colorado State University, Fort Collins, CO Weather Station Monthly Summary Report

Month: June
Year: 2022



Temperature:

Mean T_{\max} was 85.0°F which is 3.2° above the 1991-2020 normal for the month. This is the 12th warmest (91st percentile) in the 134-year record (1889-2022), tied with 2020. The last June this warm or warmer was 2021 with 86.4°F.

Mean T_{\min} was 53.5°F which is 0.7° above the 1991-2020 normal for the month. This is the 21st warmest (85th percentile) in the 134-year record (1889-2022). The last June this warm or warmer was 2021 with 55.2°F.

Mean T_{mean} was 69.3°F which is 2.0° above the 1991-2020 normal for the month. This is the 15th warmest (89th percentile) in the 134-year record (1889-2022). The last June this warm or warmer was 2021 with 70.8°F.

The maximum daily temperature for the month was 99°F and occurred on June 11, 2022.

The minimum daily temperature for the month was 40°F and occurred on June 2, 2022.

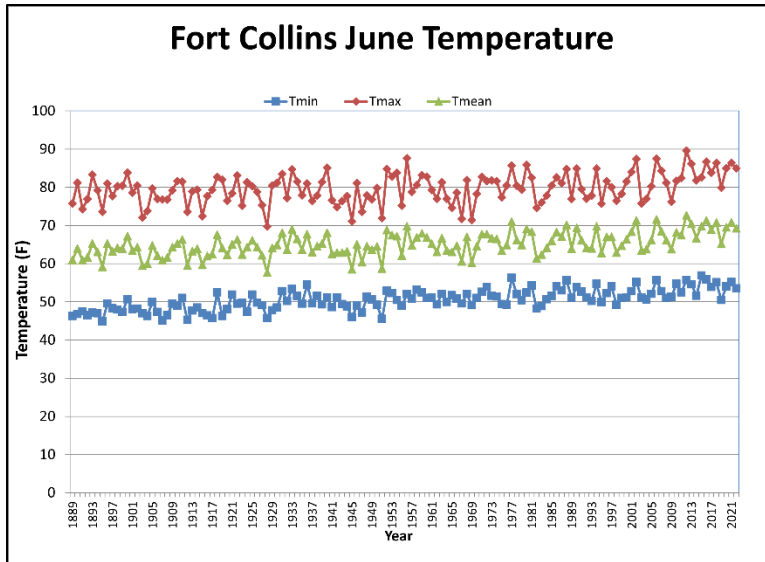


Figure 1: June temperature time series.

Misc. Temperature (record status, thresholds, etc.):

Maximum Temperature Record:

June 11, 2022: The maximum temperature of 99°F broke the old record for the day of 96°F set in 1956 and 2012.

June 13, 2022: The maximum temperature of 97°F broke the old record for the day of 96°F set in 1956.

Warmest Minimum Temperature:

June 12, 2022: The minimum temperature for the day of 63°F tied the record warmest minimum for the day set in 2001.

90° Days

June 2022 had 11 days with a max temperature above 90F. The average for June is 4 days.

This year has seen 12 days with a max temperature above 90F. The average for the year through June is 4.

Between June 9th-June 13th, there was a run of 5 consecutive days at or above 90F. This is the earliest run of 5 or more consecutive days at or above 90F.

Precipitation and Snowfall:

Total monthly precipitation was 0.94” which is 0.96” below the 1991-2020 normal for the month (50% of normal). This ranks as the 39th driest (29th percentile) in the 134-year record (1889-2022). The last June this dry or drier was 2021 with 0.48” of precipitation.

Water Year 2022 precipitation through June totaled 7.23” which is 4.14” below the 1991-2020 normal (64% of normal). This ranks as 16th driest start to a water year (11th percentile) in the 133-year record (1890-2022). The last water year to start this dry or drier was 2012 with 6.92” of precipitation through June.

Seasonal Snowfall for the 2022 snow season was 44.1”. This is 7.3” below the 1991-2020 normal for the season (86% of normal). This ranks as the 58th least snowy season (43rd percentile). The last season with this little snowfall was the 2018 snow season with 35.3” of snow.

June had 7 days with measurable precipitation (≥ 0.01 ”) and 6 days with a trace of precipitation (≤ 0.01 ”)

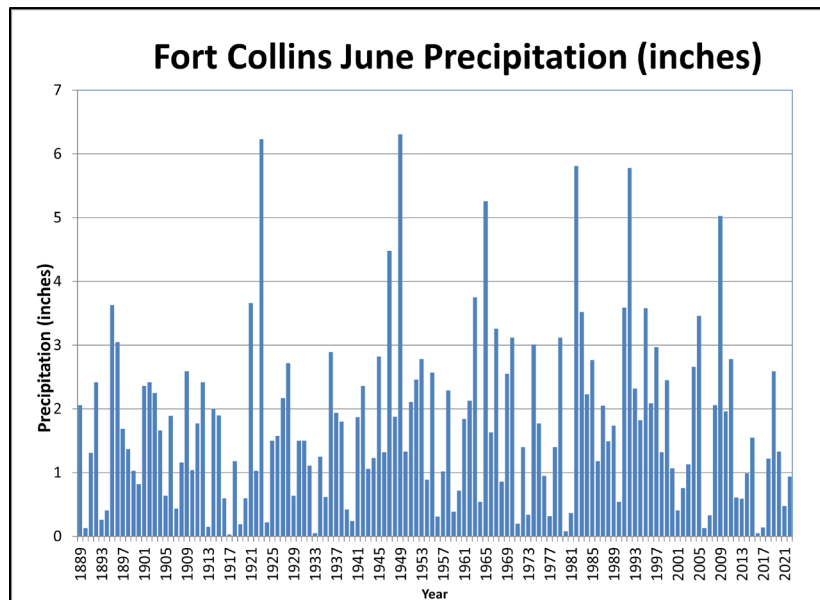


Figure 2: June precipitation time series.

Misc. Precipitation (predominant type, record status, etc.):

No precipitation records in June 2022.

The highest one-day precipitation total for June 2022 was 0.37" falling on June 6th.

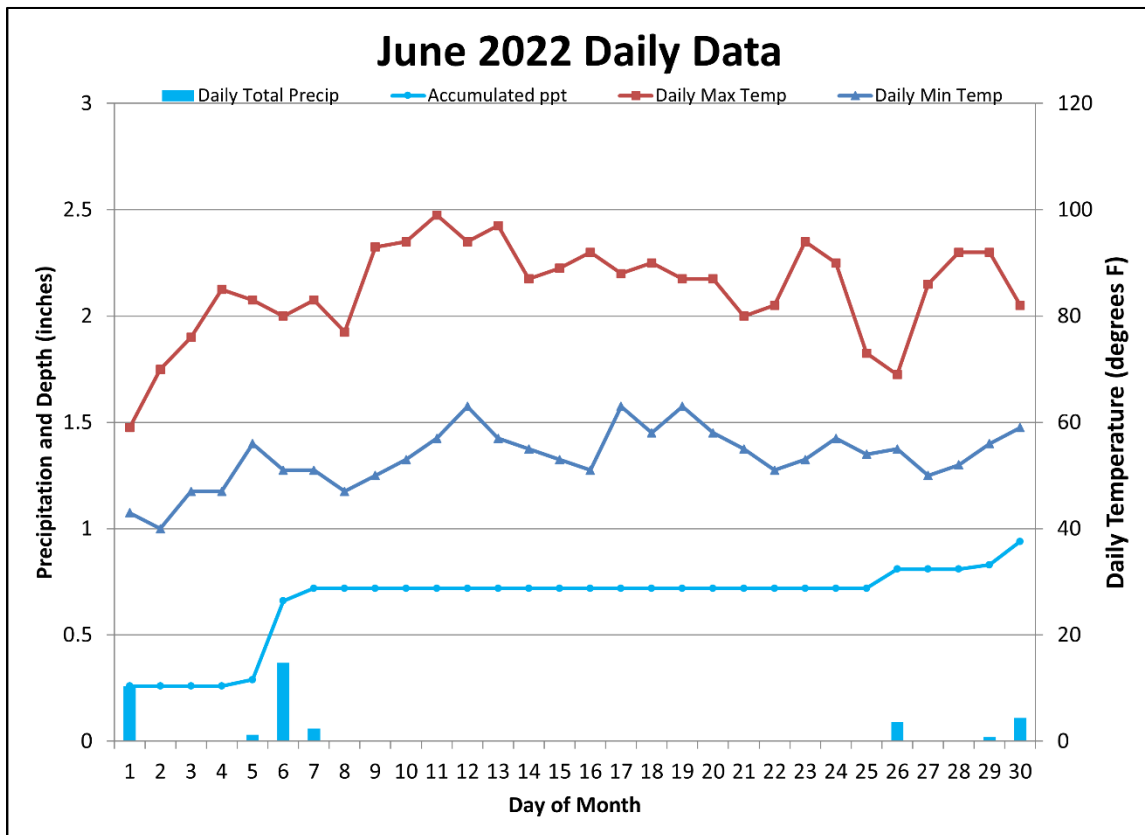


Figure 3: Daily Data for June 2022. Precipitation and temperature both show up on this graph. The y-axis on the left is for precipitation and snowfall. The y-axis on the right is for temperature.

Wind:

In June 2022 there were 17 days with maximum wind gusts ≥ 20 mph and 2 days ≥ 30 mph.

The maximum daily wind gust for the month was 30 mph and occurred on June 7, 2022, at 6:42 PM MST from 010° (NNE).

Pan Evaporation:

Pan evaporation for June 2022 totaled 11.82". This is 4.71" above the normal for the month (166% of normal).

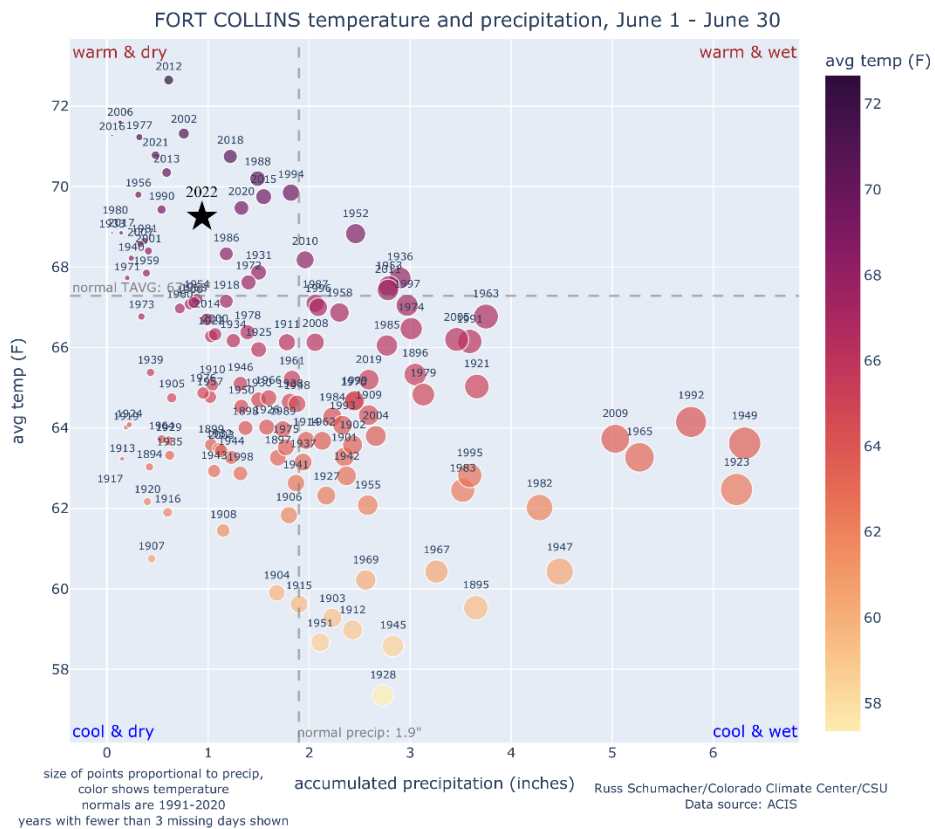


Figure 4: June (top), calendar year to date (top on next page) and water year today (bottom on next page) precipitation and temperature data plot. Each dot plots monthly average temperature and precipitation at Fort Collins for the period of record. From left to right, monthly precipitation is shown on the x-axis, where the wettest years are plotted furthest to the right. Dot sizes are proportional to precipitation amounts. From bottom to top on the y-axis, average monthly temperature is shown, where the warmest years are plotted towards the top. The dots are also color coded with darker colors indicating higher temperatures. The horizontal and vertical dotted lines indicate the 1991-2020 normals. June is warmer and drier than normal. The first 6 months of the year have been slightly cooler and drier than normal. The water year has been warmer and much drier than normal.

