

# Colorado State University, Fort Collins, CO Weather Station Monthly Summary Report

**Month: February**  
**Year: 2022**



Photo by Noah Newman

## **Temperature:**

Mean  $T_{\max}$  was  $43.6^{\circ}\text{F}$  which is  $3.2^{\circ}$  below the 1991-2020 normal for the month. This is the 56<sup>th</sup> coolest in the 134-year record (1889-2022). The last February this cool or cooler was 2021 with  $38.1^{\circ}\text{F}$ .

Mean  $T_{\min}$  was  $13.8^{\circ}\text{F}$  which is  $7.0^{\circ}$  below the 1991-2020 normal for the month. This is the 32<sup>nd</sup> coolest in the 134-year record (1889-2022). The last February this cool or cooler was 1989 with  $10.3^{\circ}\text{F}$ .

Mean  $T_{\text{mean}}$  was  $28.7^{\circ}\text{F}$  which is  $5.1^{\circ}$  below the 1991-2020 the normal for the month. This is the 41<sup>st</sup> coolest in the 134-year record (1889-2022). The last February this cool or cooler was 2021 with  $26.5^{\circ}\text{F}$ .

Winter (December, January, February) mean temperature was  $31.7^{\circ}\text{F}$  which is  $0.5^{\circ}\text{F}$  below the normal for the month. This ranks as the 101<sup>st</sup> coolest (33<sup>rd</sup> warmest) winter in the 133-year record. The last winter this cool or cooler was 2019 with  $31.5^{\circ}\text{F}$ .

The maximum daily temperature for the month was  $62^{\circ}\text{F}$  and occurred on February 28, 2022.

The minimum daily temperature for the month was  $-9^{\circ}\text{F}$  and occurred on February 3, 2022.

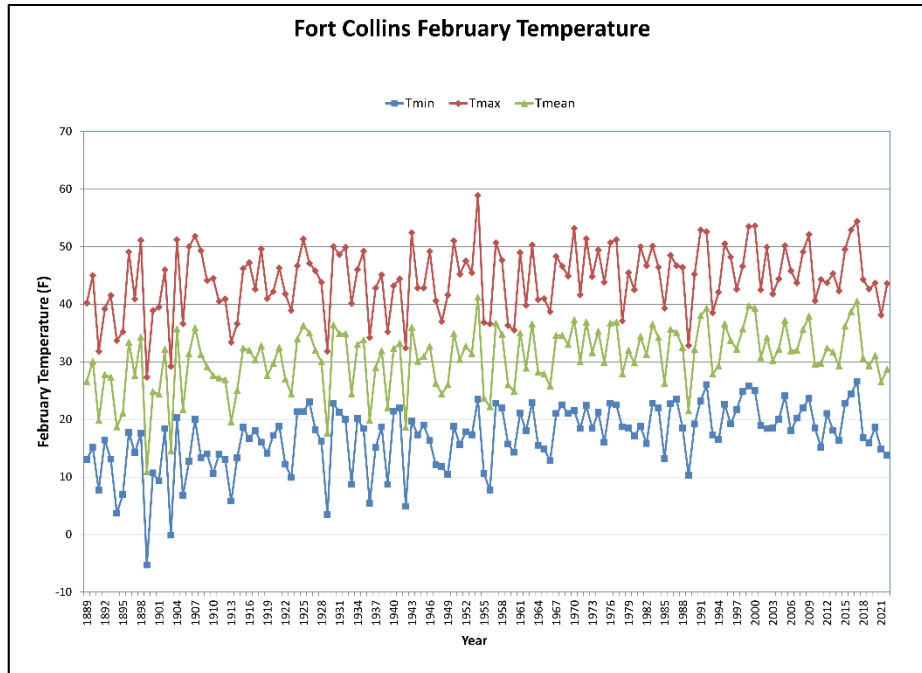


Figure 1: February temperature time series.

## Misc. Temperature (record status, thresholds, etc.):

### *Lowest Maximum Daily Temperature:*

*February 22, 2022:* The maximum temperature on of 11°F broke a record for the coldest maximum temperature for the day of 14°F set in 1913.

*February 23, 2022:* The maximum temperature of 10°F broke a record for the coldest maximum temperature of the day of 12°F set in 1922.

### *January-February Temperature:*

The mean temperature for Jan-Feb 2022 was 29.2°F, which was 3.5°F below the normal for the two months. This is the 56<sup>th</sup> coolest in the record for this period. The last time the Jan-Feb temperature was this cool or cooler was 2007. This was the only other time in the 2000s the temperature for Jan-Feb was this cool.

## **Precipitation and Snowfall:**

Total monthly precipitation was 0.98” which is 0.57” above the 1991-2020 normal for the month (209% of normal). This ranks as the 17<sup>th</sup> wettest in the 134-year record (1889-2022). The last February this wet or wetter was 2016 with a 1.01” of precipitation.

Water Year 2022 precipitation through February totaled 2.84” which is 0.50” below the 1991-2020 normal (85% of normal). This ranks as the 67<sup>th</sup> driest and wettest (50<sup>th</sup> percentile, the median!) start to a water year in the 133-year record (1890-2022). The last water year to start this dry or drier was 2019 with 2.38” of precipitation through February.

Winter precipitation totaled 2.38” which is 1.03” above the normal (176% of normal) for the season. This ranks as the 11<sup>th</sup> wettest winter in the 133-year record (1890-2022). The last winter this wet or wetter was 2016 with 2.53”.

Total monthly snowfall for February was 16.2” which is 8.6” above the 1991-2020 normal for the month (213% of normal). This ranks as the 9<sup>th</sup> snowiest February in the 134-year record (1889-2022). The last February with this much snow or more was 2015 with 17.0” of snowfall.

Seasonal Snowfall for the 2022 snow season totaled 35.3” through February. This is 1.1” above the 1991-2020 normal (103% of normal). This ranks as the 42<sup>nd</sup> snowiest start to a snow season. The last season to start with this much snowfall or more was the 2021 snow season with 43.5” of snow through February.

February had 7 days with measurable precipitation ( $\geq 0.01$ ”) and 8 days with measurable snowfall ( $\geq 0.1$ ”).

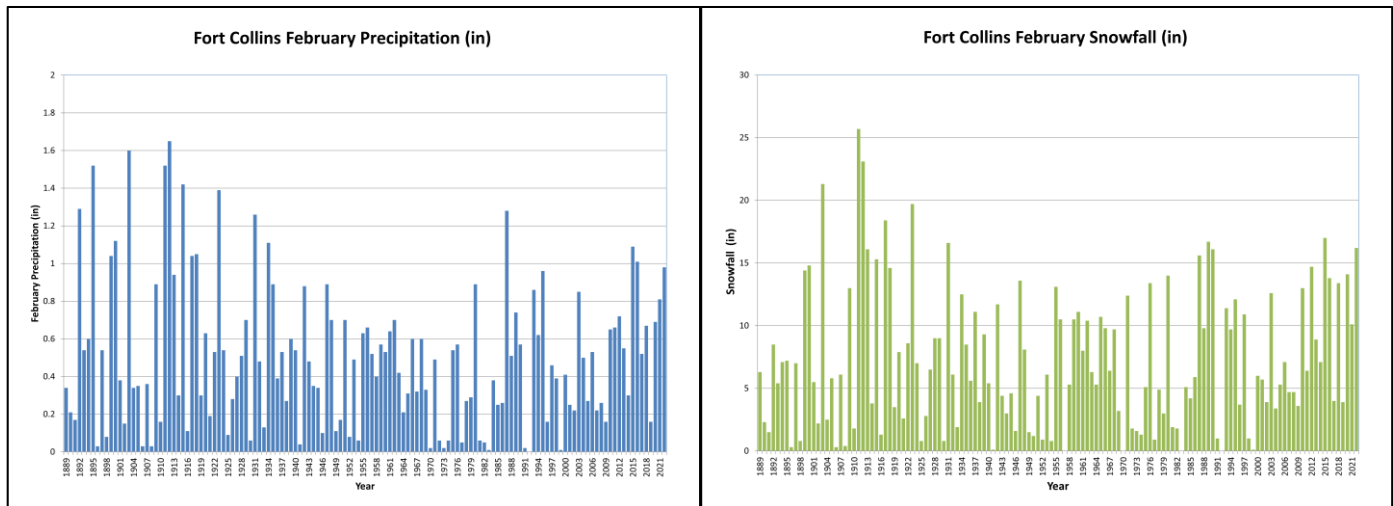


Figure 2: February precipitation (left) and snowfall (right) time series.

## Misc. Precipitation (predominant type, record status, etc.):

### *Daily Snowfall Record:*

**February 2, 2022:** The snowfall amount of 7.8” tied the record for the day set in 2016.

### *Days with Snow Depth $\geq 1$ inch*

February had 19 days with 1” of snow or greater on the ground. This compares to a normal of 8 days in February.

This season has seen 51 days with 1” of snow or greater on the ground through the end of February. This compares to a normal of 32 days.

**The highest one-day precipitation total for February 2022 was 0.48” falling on February 2<sup>nd</sup>. The highest one-day snowfall total for the month was 7.8” on February 2<sup>nd</sup>.**

### *January-February Precipitation and Snowfall:*

Precipitation for Jan-Feb totaled 1.83” which was 0.95” above normal. This was the 7<sup>th</sup> wettest Jan-Feb in the record. The last time precipitation was this high was 1980 with 2.03”.

Snowfall for Jan-Feb totaled 28.1” which was 13.8” above normal. This was the 5<sup>th</sup> snowiest Jan-Feb in the record. The last time snowfall was this high was 1980 with 33.2” and the highest for this period.

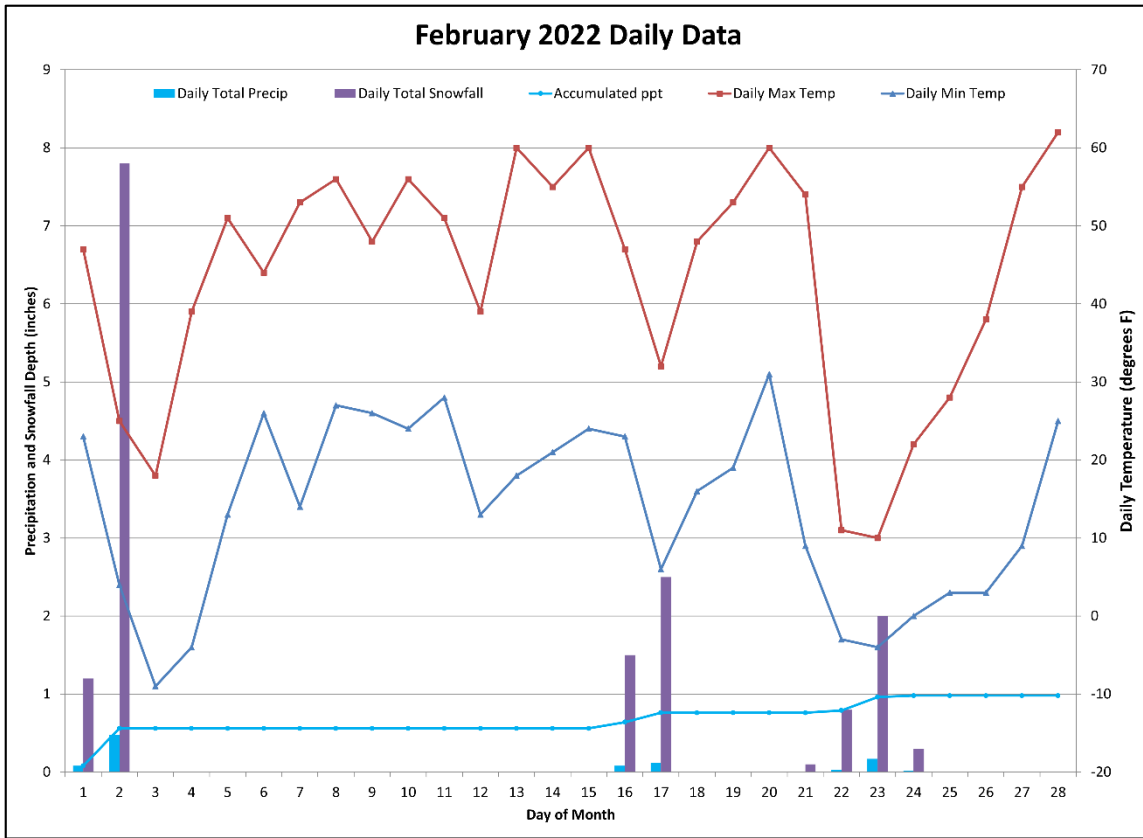
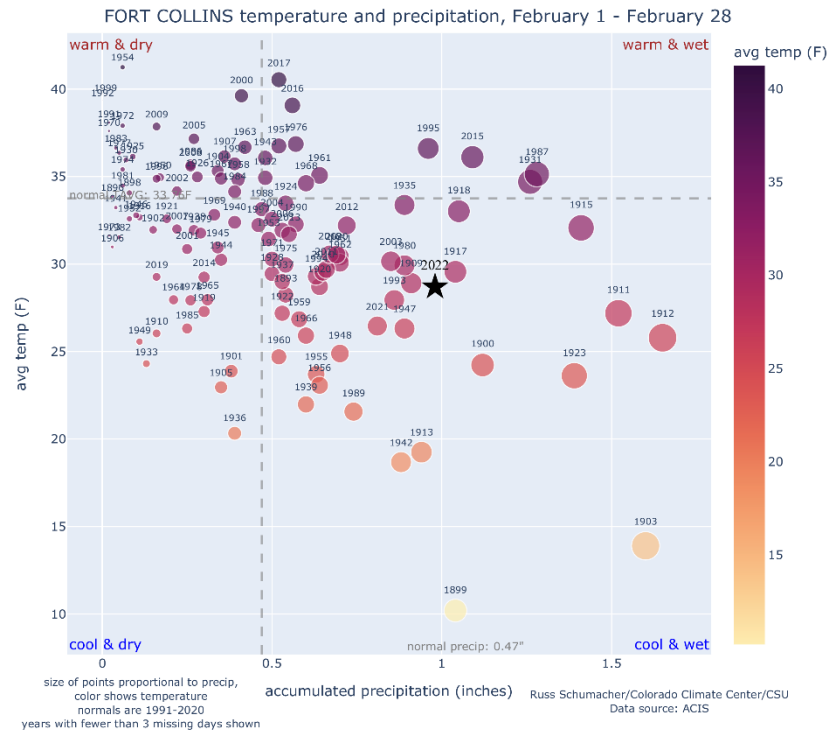


Figure 3: Daily Data for February 2022. Precipitation and temperature both show up on this graph. The y-axis on the left is for precipitation and snowfall. The y-axis on the right is for temperature.

### Wind:

In February 2022 there were 8 days with maximum wind gusts  $\geq 20$  mph and 0 days  $\geq 30$  mph.

The maximum daily wind gust for the month was 28 mph and occurred on February 11, 2022, at 5:15 AM MST from  $010^\circ$  (NNW).



**Figure 4:** February (top) and winter (bottom) precipitation and temperature data plot. Each dot plots monthly average temperature and precipitation at Fort Collins for the period of record. From left to right, monthly precipitation is shown on the x-axis, where the wettest years are plotted furthest to the right. Dot sizes are proportional to precipitation amounts. From bottom to top on the y-axis, average monthly temperature is shown, where the warmest years are plotted towards the top. The dots are also color coded with darker colors indicating higher temperatures. The horizontal and vertical dotted lines indicate the 1991-2020 normals. February 2022 shows up in the increasingly rare cool and wet quadrant. Winter shows up slight cooler than normal and much wetter than normal.

