

Colorado State University, Fort Collins, CO Weather Station Monthly Summary Report

Month: February
Year: 2019



Temperature:

Mean T_{\max} was 42.6°F which is 3.9° below the 1981-2010 normal for the month. This is the 48th coldest in the 131-year record (1889-2019), tied with 1917 and 1997. The last February this cold or colder was 2014 with 42.3°F.

Mean T_{\min} was 15.9°F which is 5.0° below the 1981-2010 normal for the month. This is the 45th coldest in the 131-year record (1889-2019). The last February this cold or colder was 2011 with 15.1°F

Mean T_{mean} was 29.3°F which is 4.4° below the 1981-2010 the normal for the month. This is the 43rd coldest in the 131-year record (1889-2019), tied with 1994 and 2014. The last February this cold or colder was 2014.

Winter (December, January, February) mean temperature was 31.3°F which is 0.4° below the 1981–2010 normal for the season (2.0° above the 1890-2019 average). This ranks as the 92nd coldest (39th warmest) winter in the 130-year record (1890-2019), tied with 1990. The last winter this cold or colder was 2014 with 29.9.

The maximum daily temperature for the month was 66°F and occurred on February 3, 2019.

The minimum daily temperature for the month was -4°F and occurred on February 8, 2019.

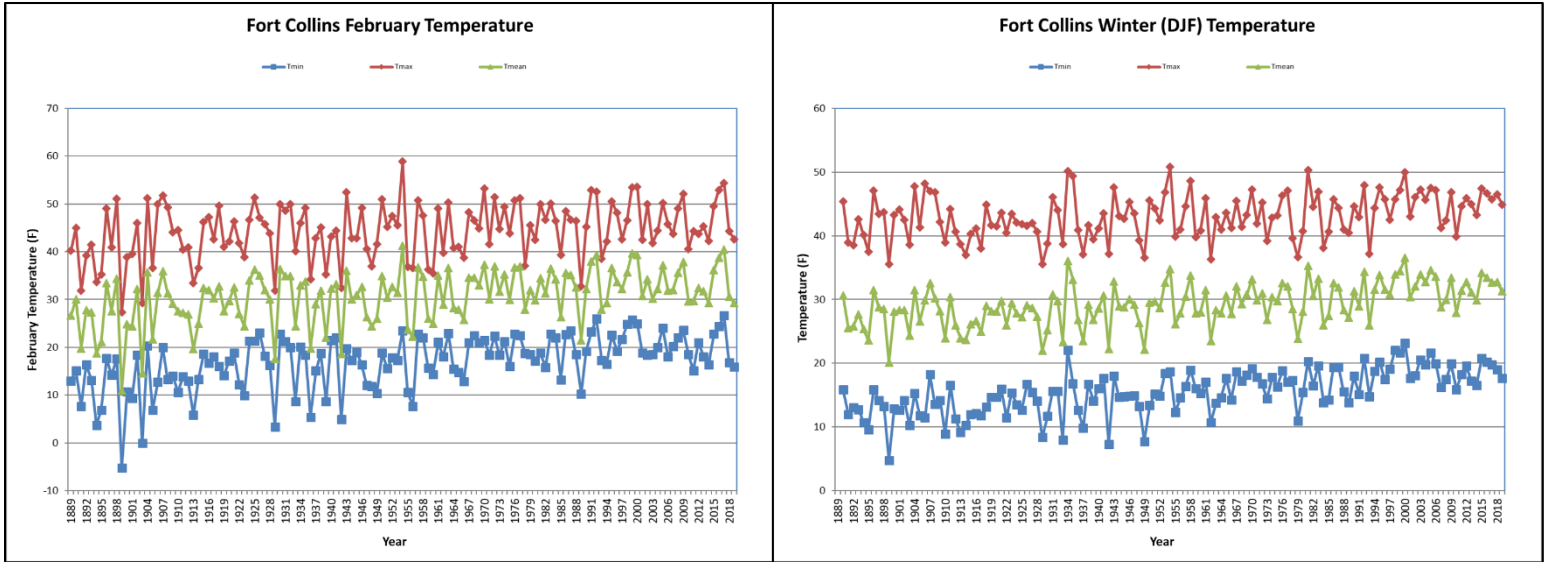


Figure 1: February (left) and winter (right) temperature time series.

Misc. Temperature (record status, thresholds, etc.):

No temperature records in February

0 Degrees and Colder Days:

February had 2 days with a minimum temperature below 0°F.

Winter 2019 has had 3 day below 0°F

Precipitation and Snowfall:

Total monthly precipitation was 0.16” which is 0.24” below the 1981-2010 normal for the month (40% of normal). This ranks as the 26th driest in the 131-year record (1889-2019), tied with 1910, 1996 and 2009. The last February this dry or drier was 2009.

Water year precipitation through February totaled 2.38” which is 0.83” below the 1981-2010 normal for the water year (74% of normal). This ranks as the 46th driest start to a water year in the 130-year record (1890-2019). The last water year to start this dry or drier was 2013 with 1.86”.

Winter precipitation (December-February) precipitation totaled 0.68” which is 0.62” below the 1981-2010 normal for the season (52% of normal). This ranks as the 21st driest winter in the 130-year record (1890-2019), tied with 1901 and 1953. The last winter this dry or drier was 2000 with 0.57” of precipitation.

February snowfall totaled 3.9” which is 3.0” below the 1981-2010 normal for the month (57% of normal). This ranks as the 43rd least snowy in the 131-year record (1889-2019), tied with 1938 and 2002. The last February with this little snow or less was 2009 with 3.6” of snowfall.

Seasonal snowfall for the 2019 season through February totaled 19.5” which is 16.8” below the 1981-2010 normal for the season (54% of normal). This ranks as the 29th least snowy start to the snow season in the 130-year record (1890-2019). The last season to start with this little snowfall was 2006 with 11.8” of snowfall.

Winter season (December-February) snowfall totaled 7.8” which is 15.4” below the 1981-2010 normal for winter (34% of normal). This ranks as the 14th least snowy winter in the 130-year record (1890-2019). The last winter with this little snow or less was 1998 with 6.9” of snowfall.

February had 4 days with measurable precipitation (≥ 0.01 ”) and 6 days with measurable snowfall (≥ 0.1 ”).

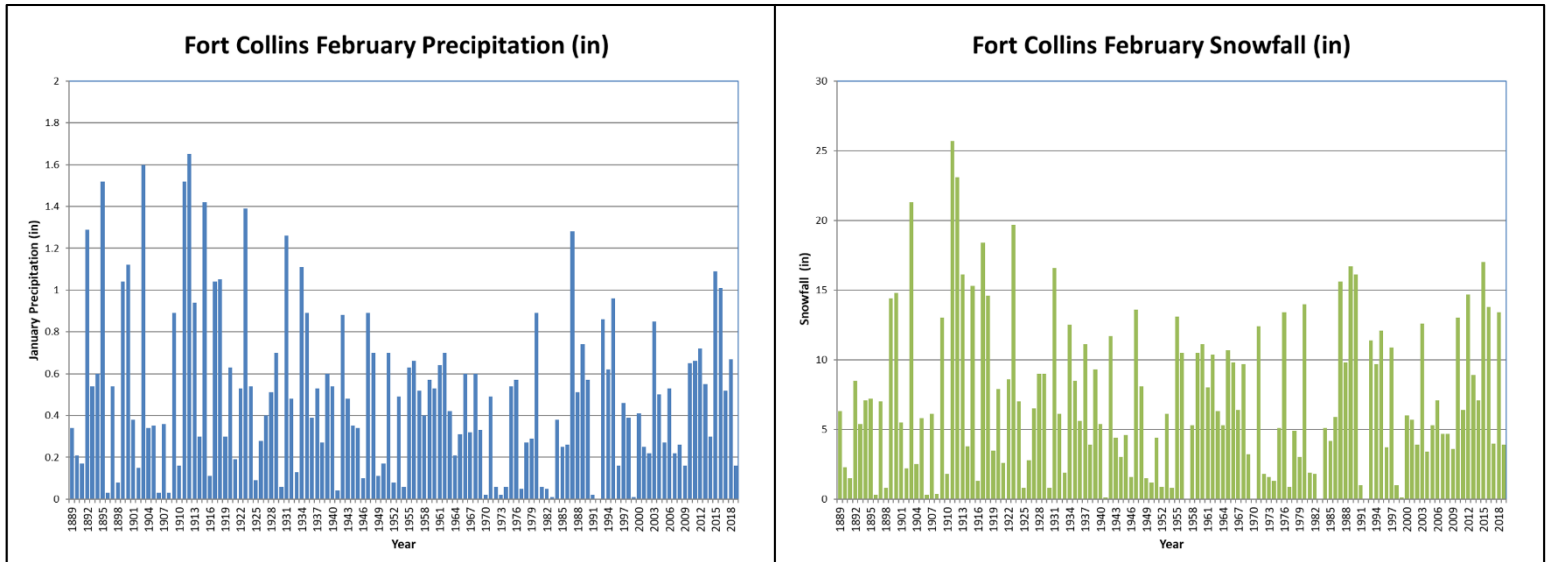


Figure 2: February precipitation (left) and snowfall (right) time series.

Misc. Precipitation (predominant type, record status, etc.):

Highest Daily Snowfall:

February 6, 2019: The daily snowfall total of 2.6" beat the old record for the day of 2.2" set in 1921.

Days with Snow Depth ≥ 1 inch

February had 4 days with 1" of snow or greater on the ground at our 7:00 PM MST observation time. This compares to a normal of 8 days in February.

This season has seen 9 days with 1" of snow or greater on the ground through February. This compares to a normal of 39 days. Yikes.

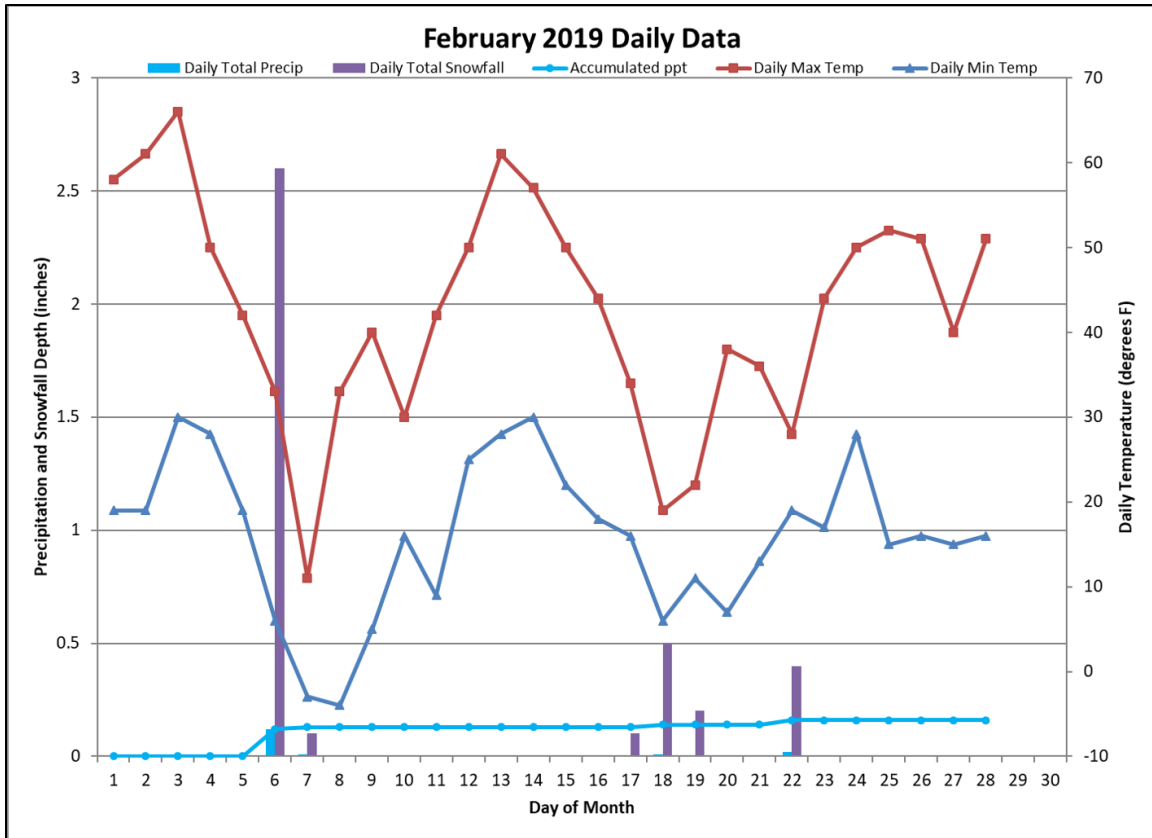


Figure 3: Daily Data for February 2018. Precipitation and temperature both show up on this graph. The y-axis on the left is for precipitation and snowfall. The y-axis on the right is for temperature.

Wind:

In February 2019 there were 9 days with maximum wind gusts ≥ 20 mph and 1 day ≥ 30 mph.

The maximum daily wind gust for the month was 37 mph and occurred on February 13, 2019 at 1:40 PM MST from 180° (the S).