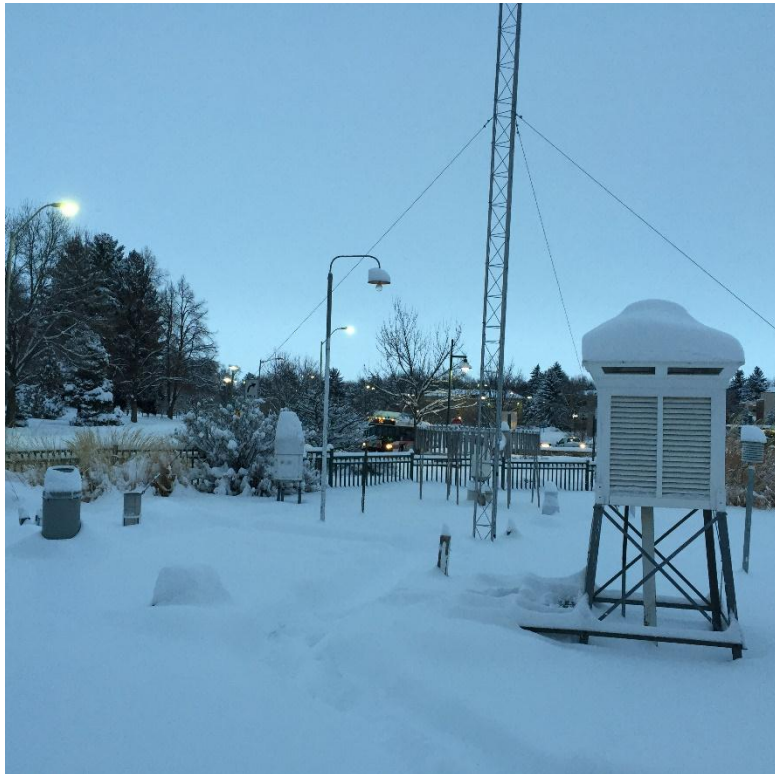


Colorado State University, Fort Collins, CO Weather Station Monthly Summary Report

Month: February
Year: 2016



Temperature:

Mean T_{\max} was 52.9°F which is 6.4° above the 1981-2010 normal for the month. This is the 6th warmest in the 128 year record (1889-2016), tied with 1991. The last February this warm or warmer was 2000 with 53.6°F .

Mean T_{\min} was 24.4°F which is 3.5° above the 1981-2010 normal for the month. This is the 5th warmest in the 128 year record (1889-2016). The last February this warm or warmer was 2000 with 25°F .

Mean T_{mean} was 38.7°F which is 5.0° above the 1981-2010 normal for the month. This is the 5th warmest in the 128 year record (1889-2016). The last February this warm or warmer was 2000 with 39.3°F .

Winter (DJF) mean temperature was 33.5°F which is 1.8° above the normal for the season. This winter ranks as the 14th warmest in the 127 year record (1890-2016). The last winter this warm or warmer was 2015 with 34.2°F .

The maximum daily temperature for the month was 71°F and occurred on February 18th, 2016.

The minimum daily temperature for the month was 1°F and occurred on February 4th, 2016.

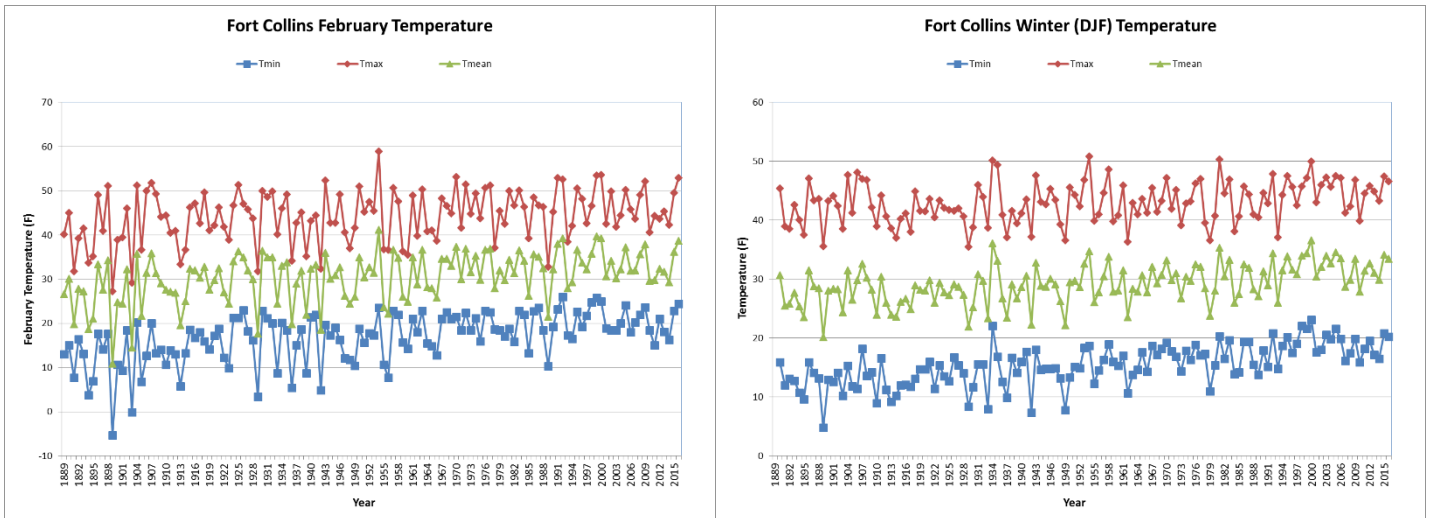


Figure 1: February (left) and winter (right) temperature time series.

Misc. Temperature (record status, thresholds, etc.):

Highest Maximum Temperature:

February 18th, 2016: The maximum temperature of 71°F broke the previous record for the day of 65°F set in 2004.

Highest Minimum Temperatures:

February 19th, 2016: The minimum temperature of 39°F broke the previous record for the day of 36 set in 2004.

February 28th, 2016: The minimum temperature of 41°F tied the record for the day set in 1972.

Days below 0F

At the end of February, there were no days below 0°F during the winter. This is only the 5th time in the history of the Fort Collins Weather Station the temperature did not drop below 0°F during winter.

Precipitation and Snowfall:

Total monthly precipitation is 1.01” and was 0.61” above the 1981-2010 normal for the month (253% of normal). This ranks as the 16th wettest in the 128 year record (1889-2016). The last February this wet or wetter was 2015 with 1.09” of precipitation.

Water year precipitation through February totaled 5.90” and is 2.69” above the normal for the water year (184% of normal). This ranks as the 8th wettest start to the water year in the 127 year record (1890-2016), tied with 1914. The last water year to start this wet or wetter was 2007 with 6.49”.

Winter (DJF) precipitation totaled 2.53” and was 1.23” above the normal for the winter season (206% of normal). This ranks as the 7th wettest winter in the 127 year record (1890-2016), tied with 1903. The last winter this wet or wetter was 2007 with 3.46”.

Total monthly snowfall was 13.8” and was 6.9” above the 1981-2010 normal for the month (200% of normal). This was the 18th snowiest February in the 128 year record (1889-2016). The last February with this much snowfall was 2015 with 17” of snowfall.

Seasonal snowfall for the 2016 snow season is 45.9” and is 9.6” above the 1981-2010 normal for the season through February (126% of normal). This ranks as the 14th snowiest in the 127 year record (1890-2016). The last season with this much snowfall by the end of February was the 2012 season with 49.9”.

Winter snowfall totaled 37.5” and was 14.3” above the 1981-2010 normal for the season (162% of normal). This was the 6th snowiest winter in the 127 year record (1890-2016). The last winter with this much snowfall was 2007 with 43.4”.

February had 3 days with measureable precipitation (≥ 0.01 ”) and 3 days with measureable snowfall (≥ 0.1 ”).

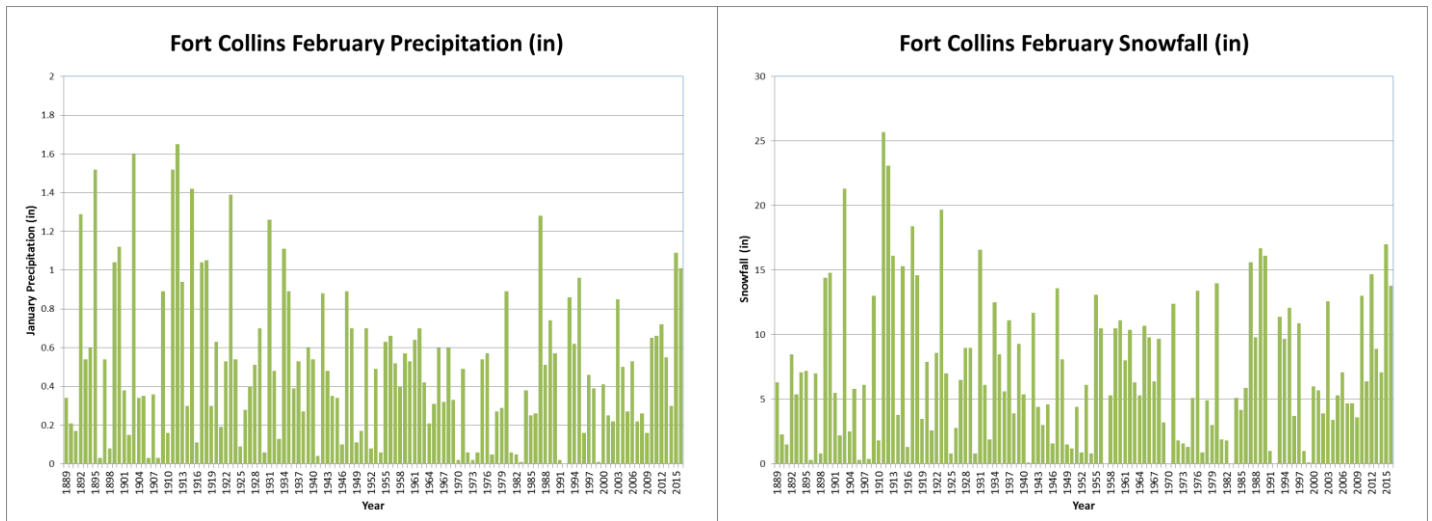


Figure 2: February precipitation (left) and snowfall (right) time series.

Misc. Precipitation (predominant type, record status, etc.):

Highest Daily Precipitation:

February 1st, 2016: The daily precipitation of 0.45” broke the previous record for the day of 0.15” set in 1940.

February 2nd, 2016: The daily precipitation of 0.49” broke the previous record for the day of 0.39” set in 1899.

Highest Daily Snowfall:

February 1st, 2016: The daily snowfall of 5.9” broke the previous record for the day of 3.0” set in 1959.

February 2nd, 2016: The daily snowfall of 7.8” broke the previous record for the day of 5.0” set in 1899.

Days with Snow Depth ≥ 1 inch

February had 11 days with at least 1” of snow on the ground. This compares to a normal of 8 days in February.

This season has seen 66 days with at least 1” of snow on the ground at the end of February. This compares to a normal of 39 days.

Wind:

In February 2016 there were 15 days with maximum wind gusts ≥ 20 mph and 8 days ≥ 30 mph.

The maximum daily wind gust for the month was 38 mph and occurred on February 19th, 2016 at 1:20 AM MST from 260.