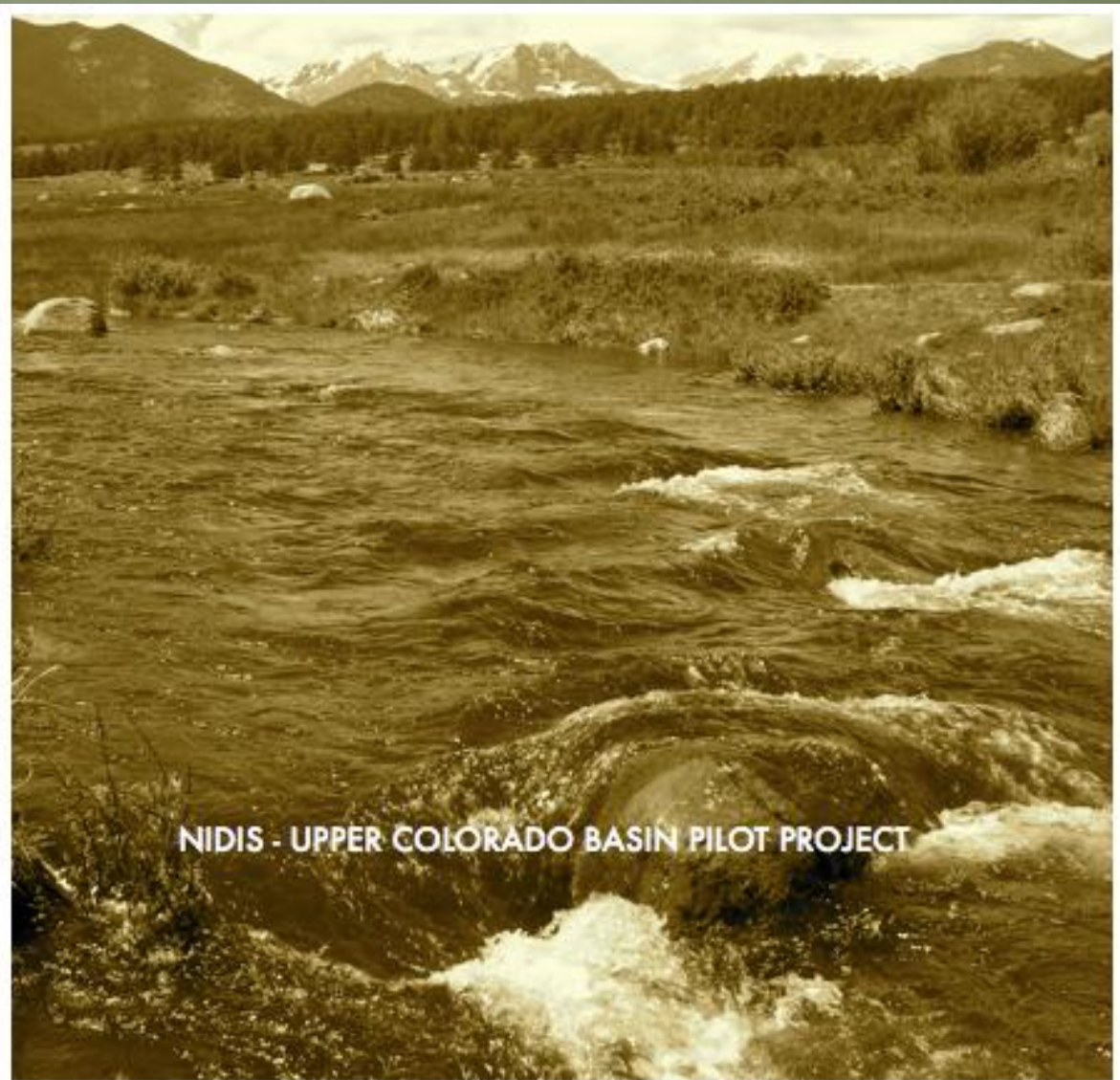


Spring  
2012



Weekly Climate, Water & Drought Assessment

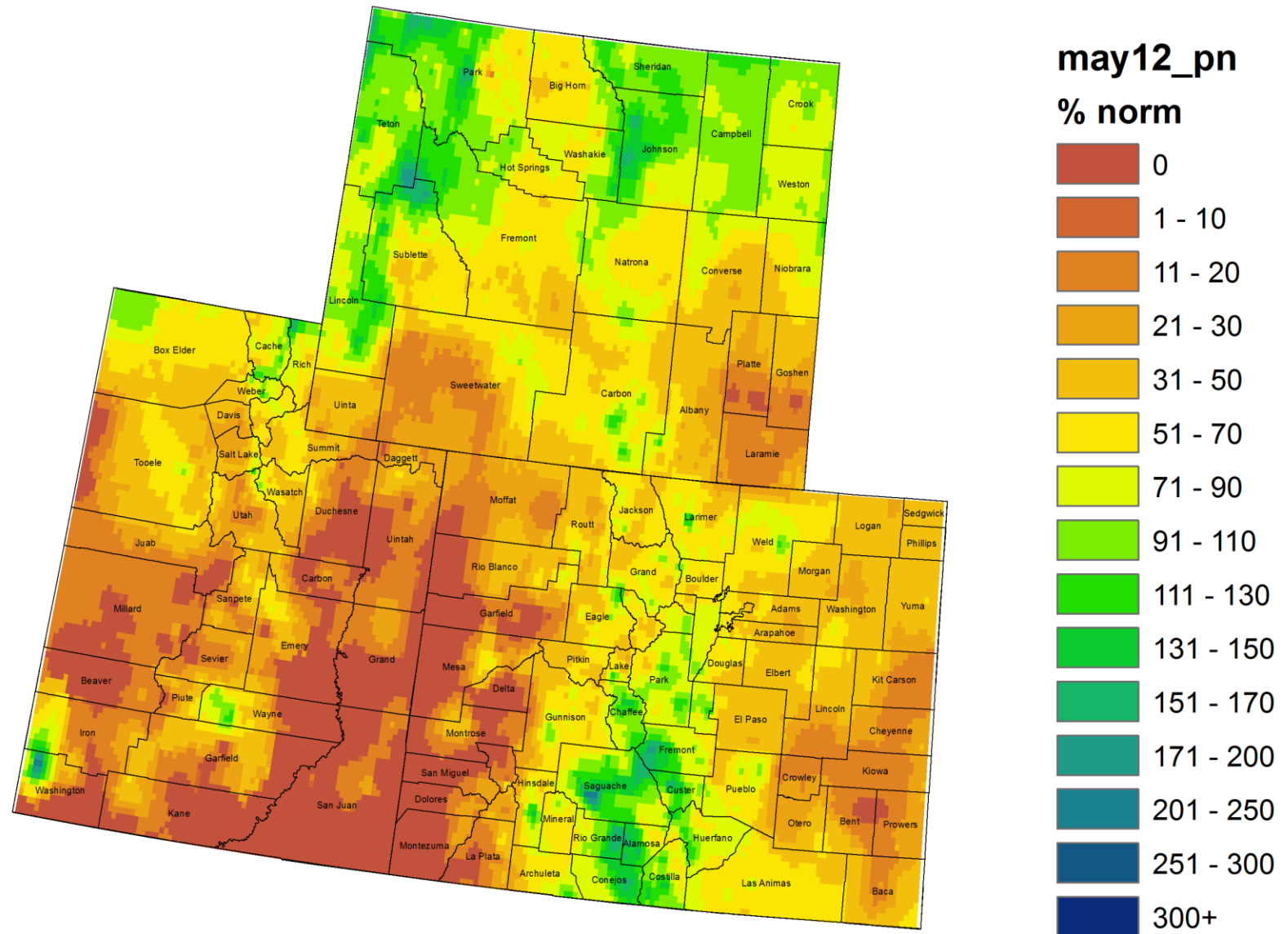
# Today's Agenda

- Assessment of current water conditions
- Precipitation Forecast
- Recommendations for Drought Monitor

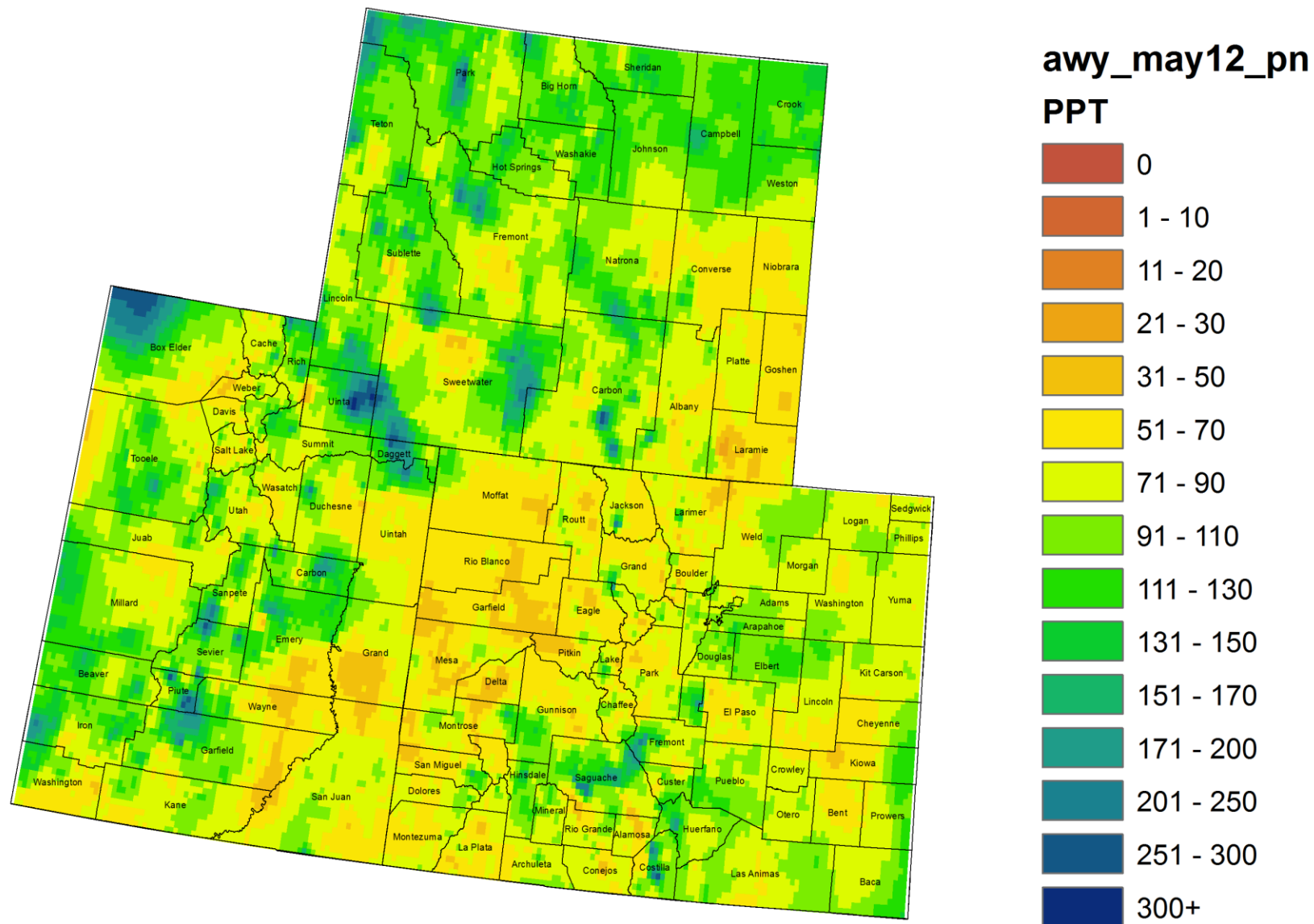
# Precipitation/Snowpack Update



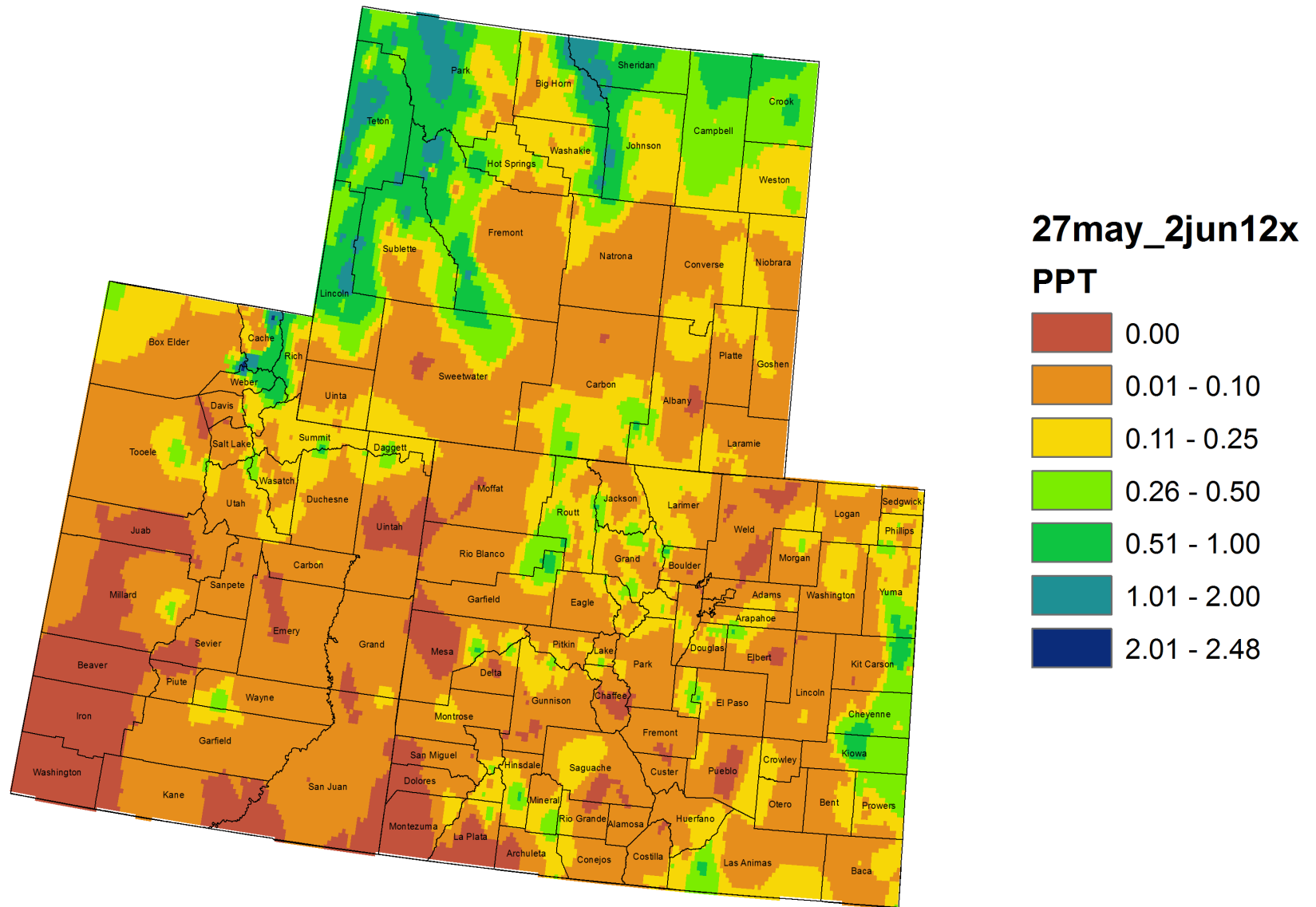
# Colorado, Utah and Wyoming May 2012 Precipitation as Percentage of Normal



# Colorado, Utah and Wyoming Water Year to Date Precipitation as Percentage of Normal (October 2012 - May 2012)

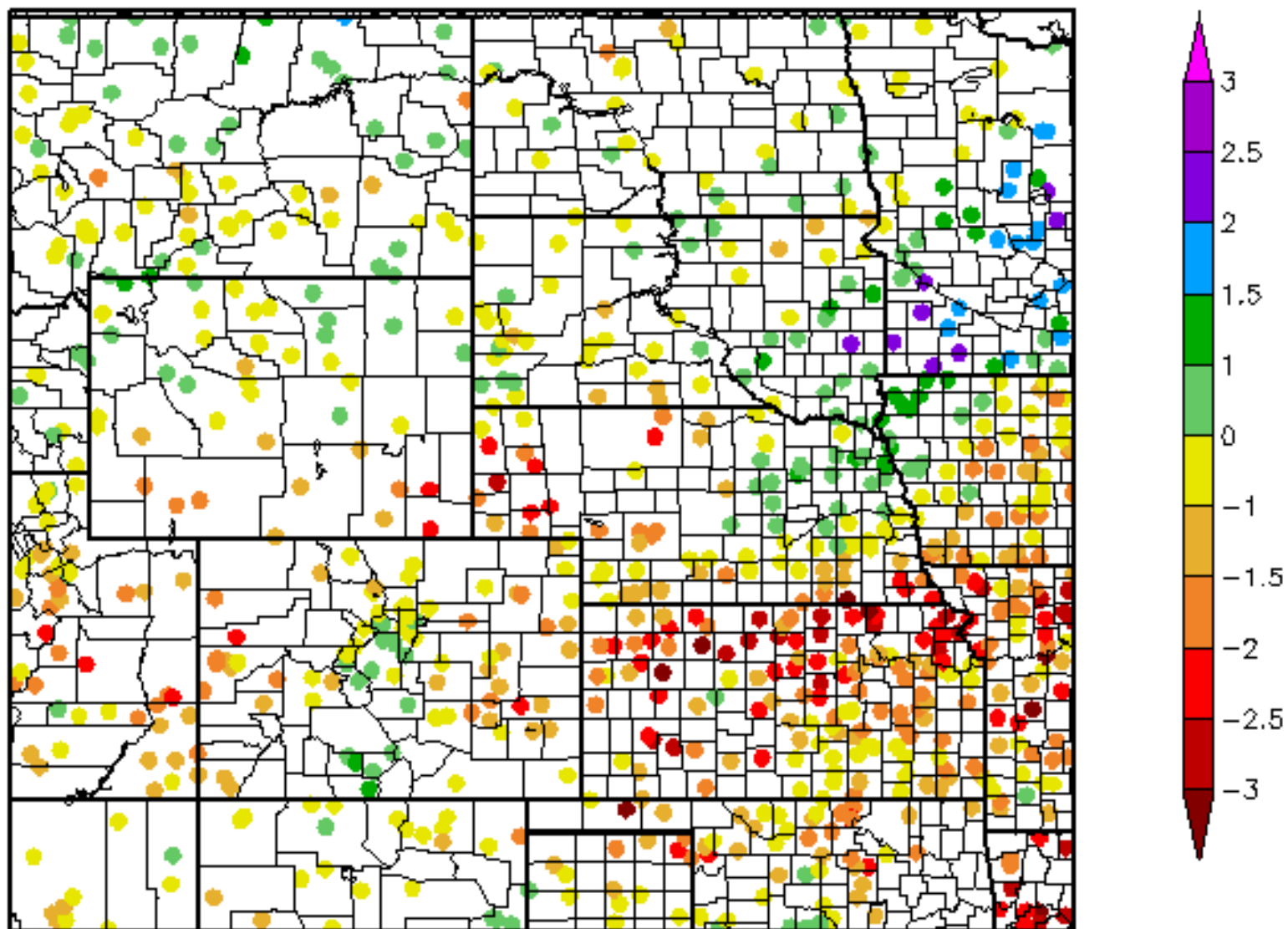


# Colorado, Utah and Wyoming 7 Day Precipitation (inches) 27 May - 2 June 2012

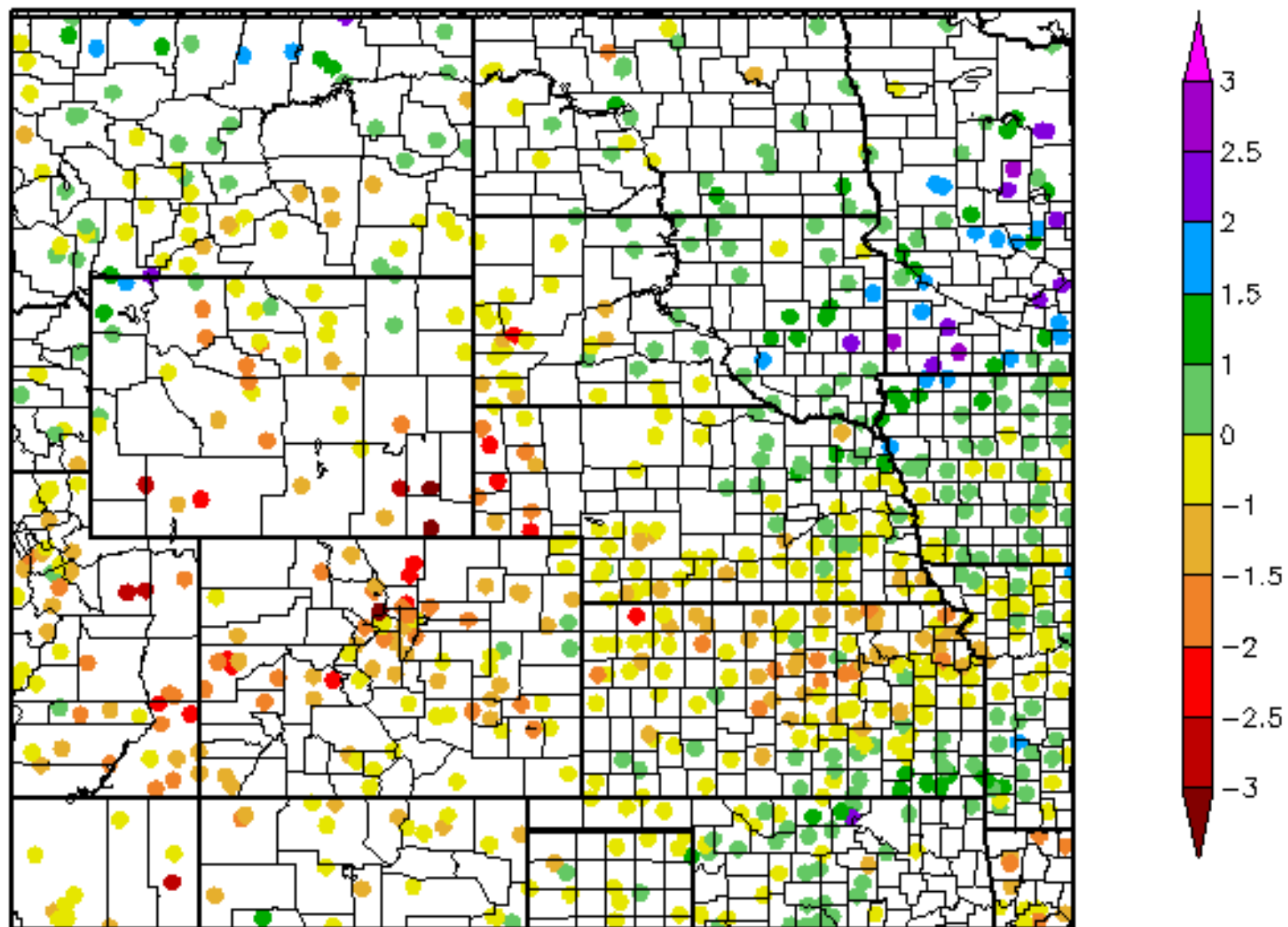


# 30 Day SPI

5/6/2012 - 6/4/2012

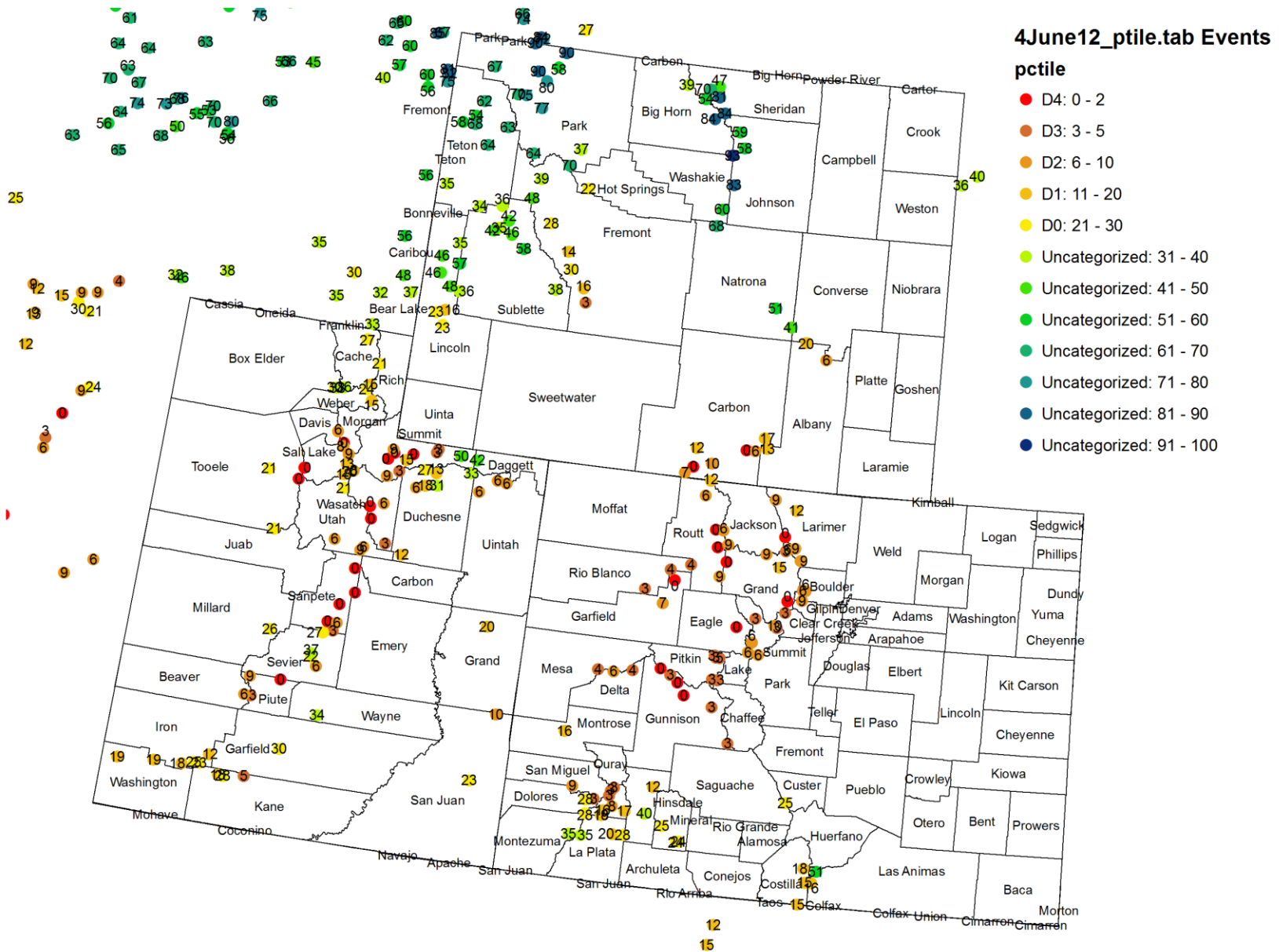


120 Day SPI  
2/6/2012 - 6/4/2012





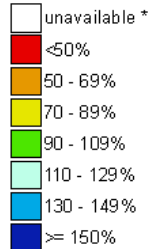
# Snotel Water Year Precipitation Percentile Ranking for 4 June 2012 (Stations with 15+ years of data only)



# Westwide SNOTEL Current Snow Water Equivalent (SWE) % of Normal

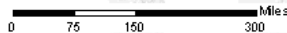
Jun 05, 2012

Current Snow Water Equivalent (SWE) Basin-wide Percent of 1971-2000 Normal



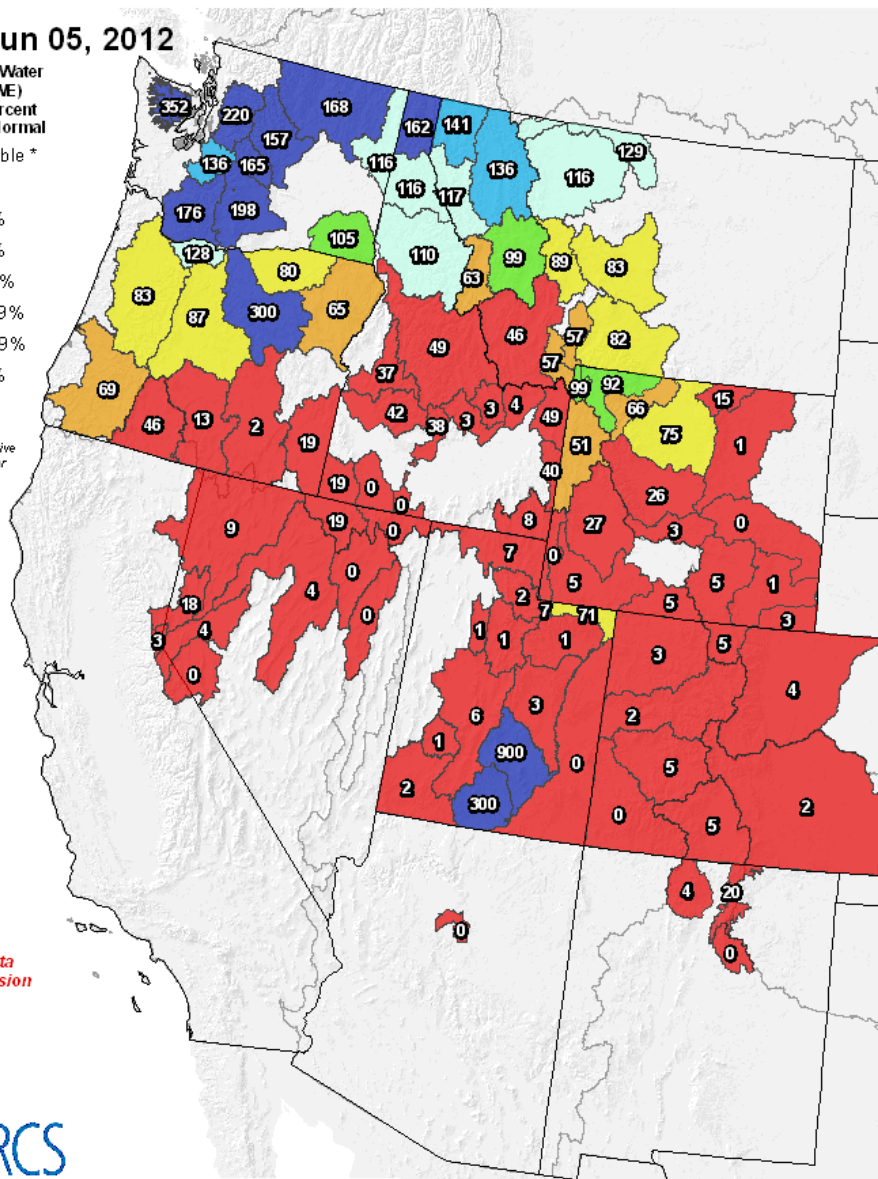
\* Data unavailable at time of posting or measurement is not representative at this time of year

*Provisional data subject to revision*

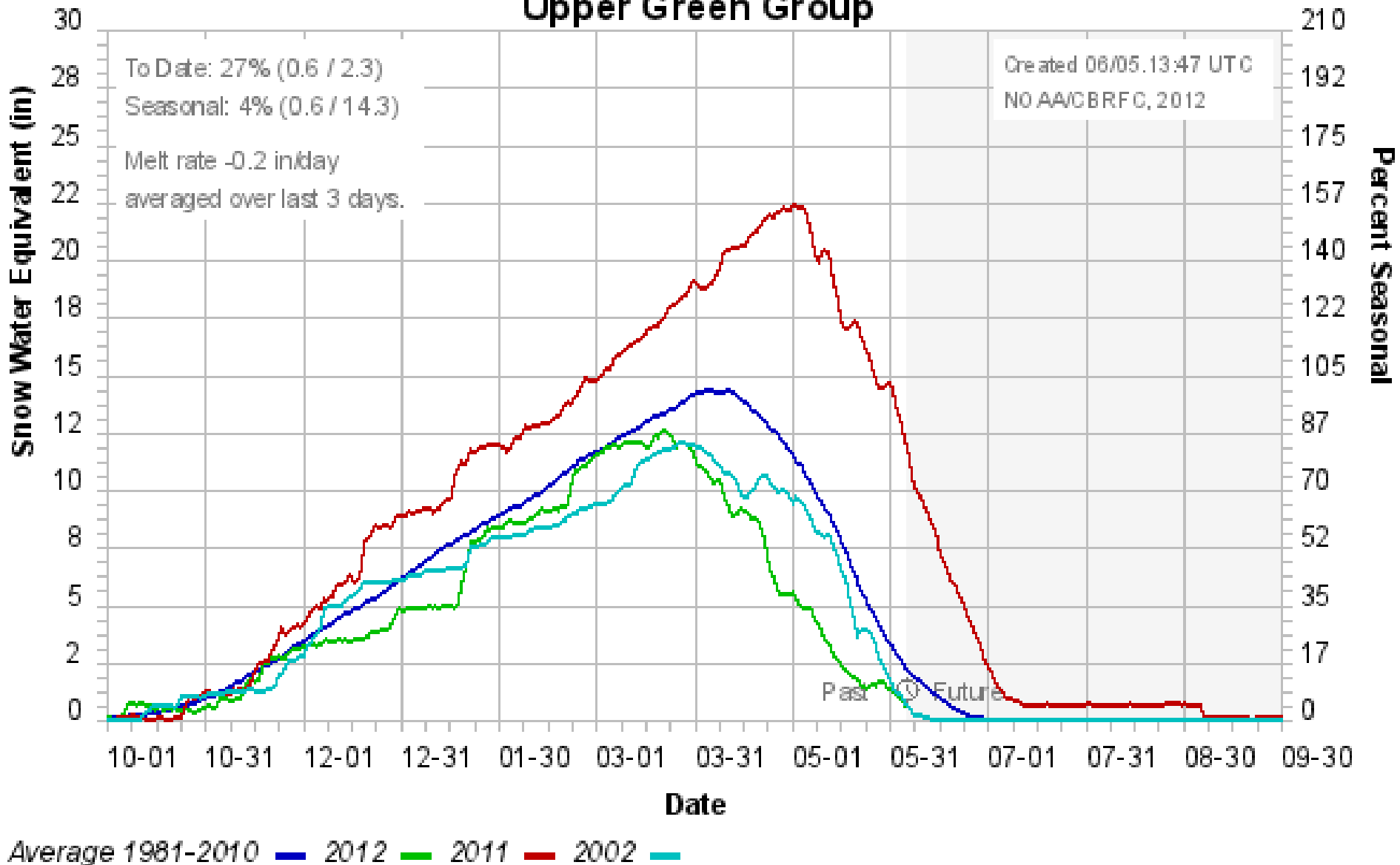


The snow water equivalent percent of normal represents the current snowwater equivalent found at selected SNOTEL sites in or near the basin compared to the average value for those sites on this day. Data based on the first reading of the day (typically 00:00).

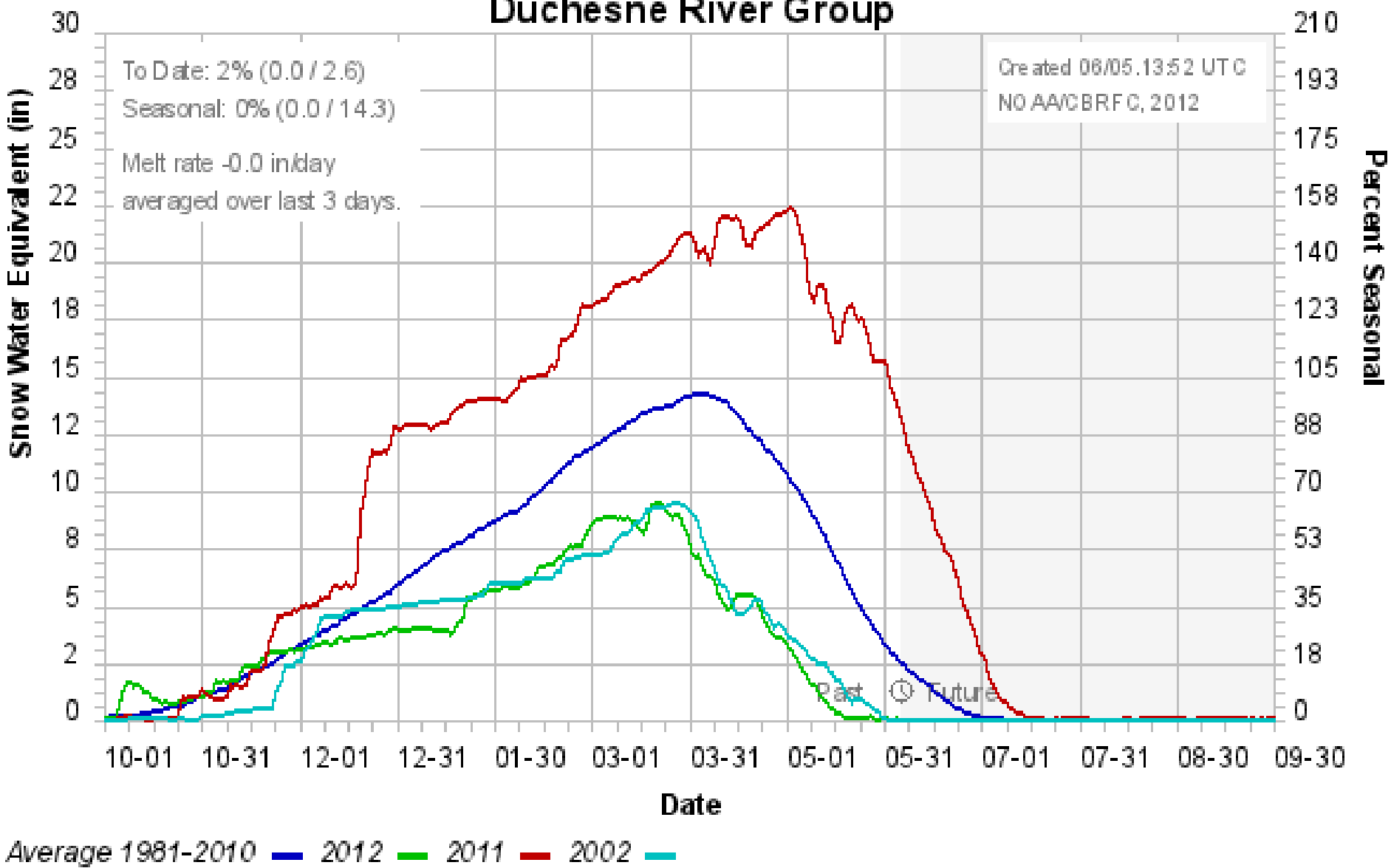
Prepared by the USDA/NRCS National Water and Climate Center  
 Portland, Oregon <http://www.wcc.nrcs.usda.gov/gis/>  
 Based on data from <http://www.wcc.nrcs.usda.gov/reports/>  
 Science contact: Jim Marron@por.usda.gov 503 414 3047



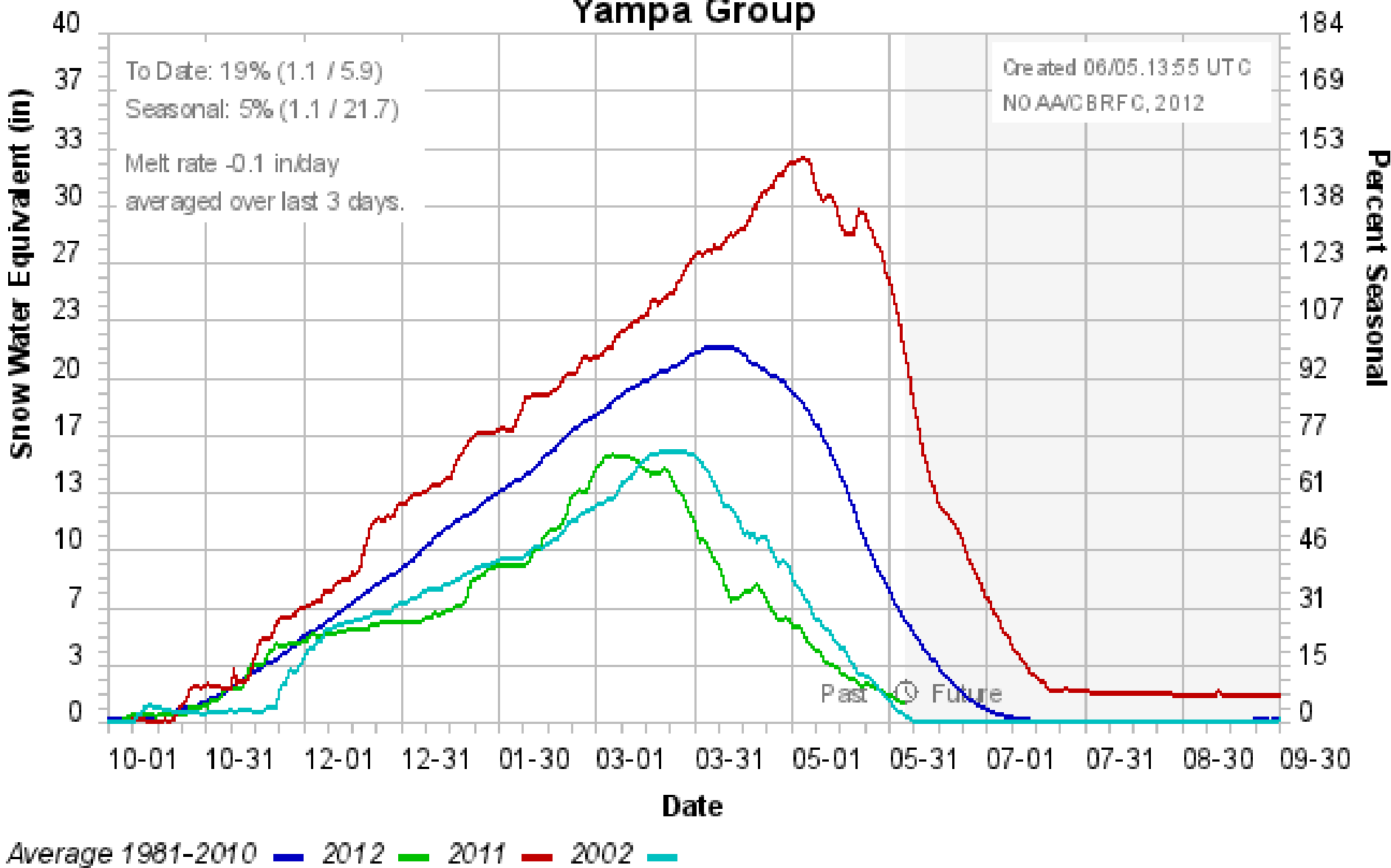
# Colorado Basin River Forecast Center Upper Green Group



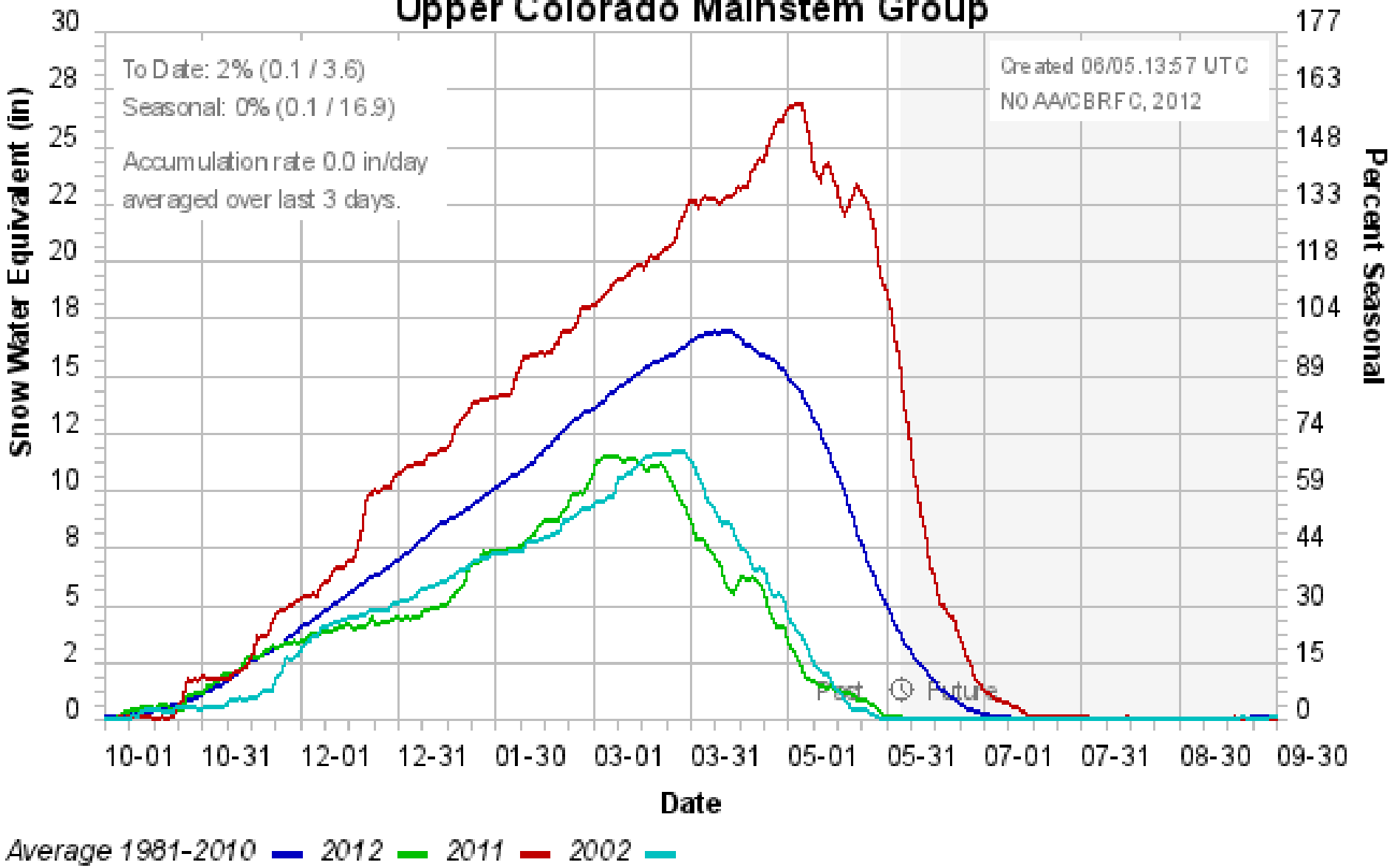
# Colorado Basin River Forecast Center Duchesne River Group



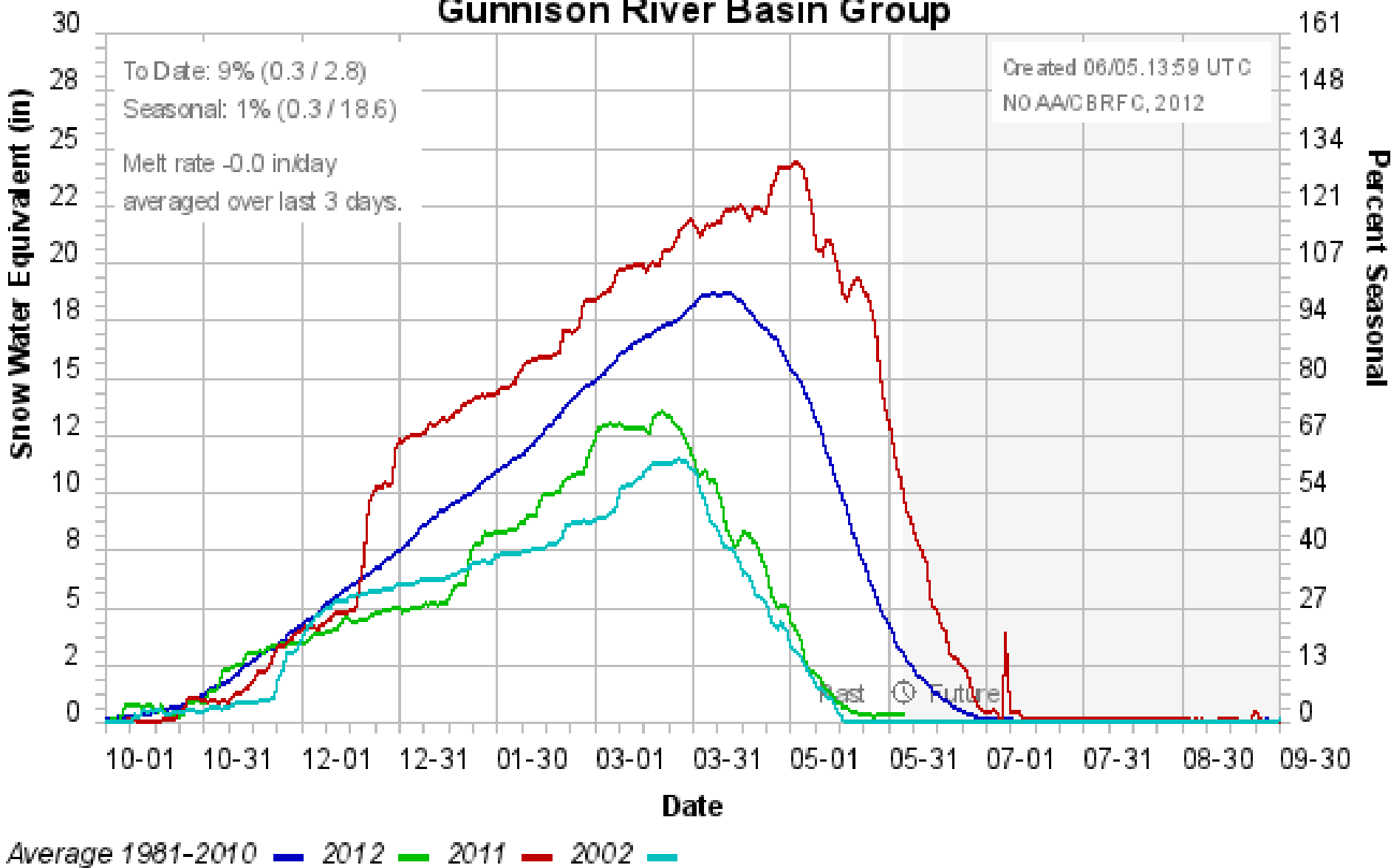
# Colorado Basin River Forecast Center Yampa Group



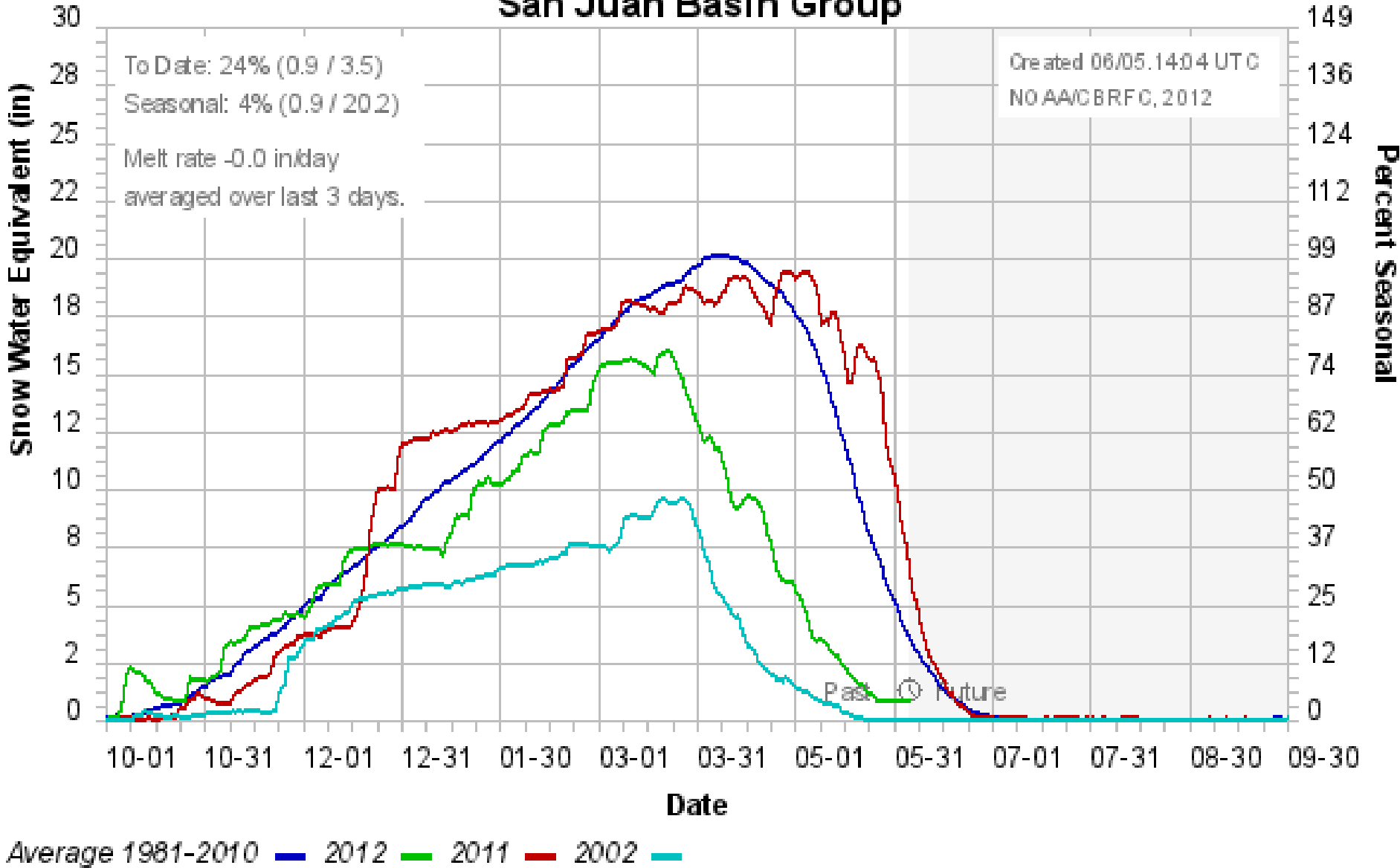
# Colorado Basin River Forecast Center Upper Colorado Mainstem Group



# Colorado Basin River Forecast Center Gunnison River Basin Group



# Colorado Basin River Forecast Center San Juan Basin Group

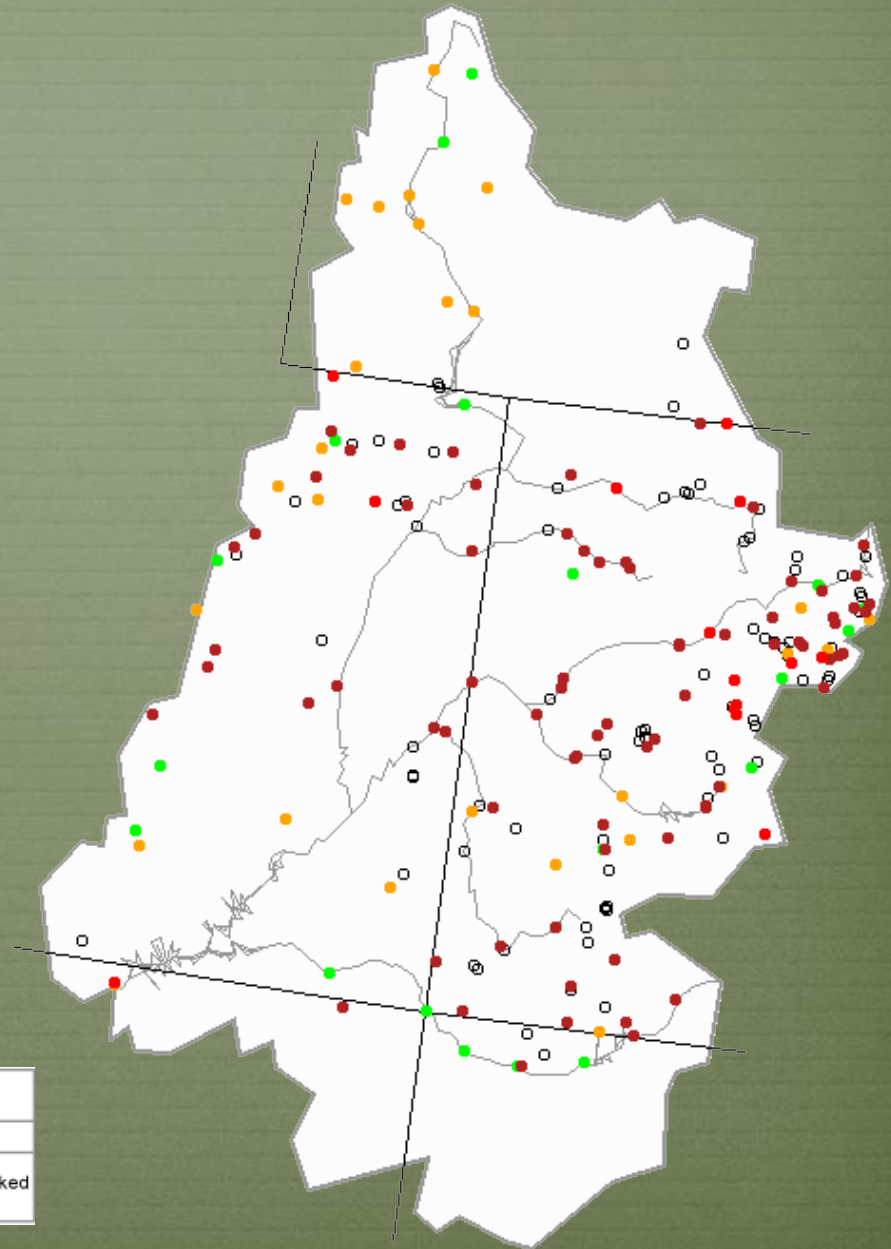




# Streamflow Update

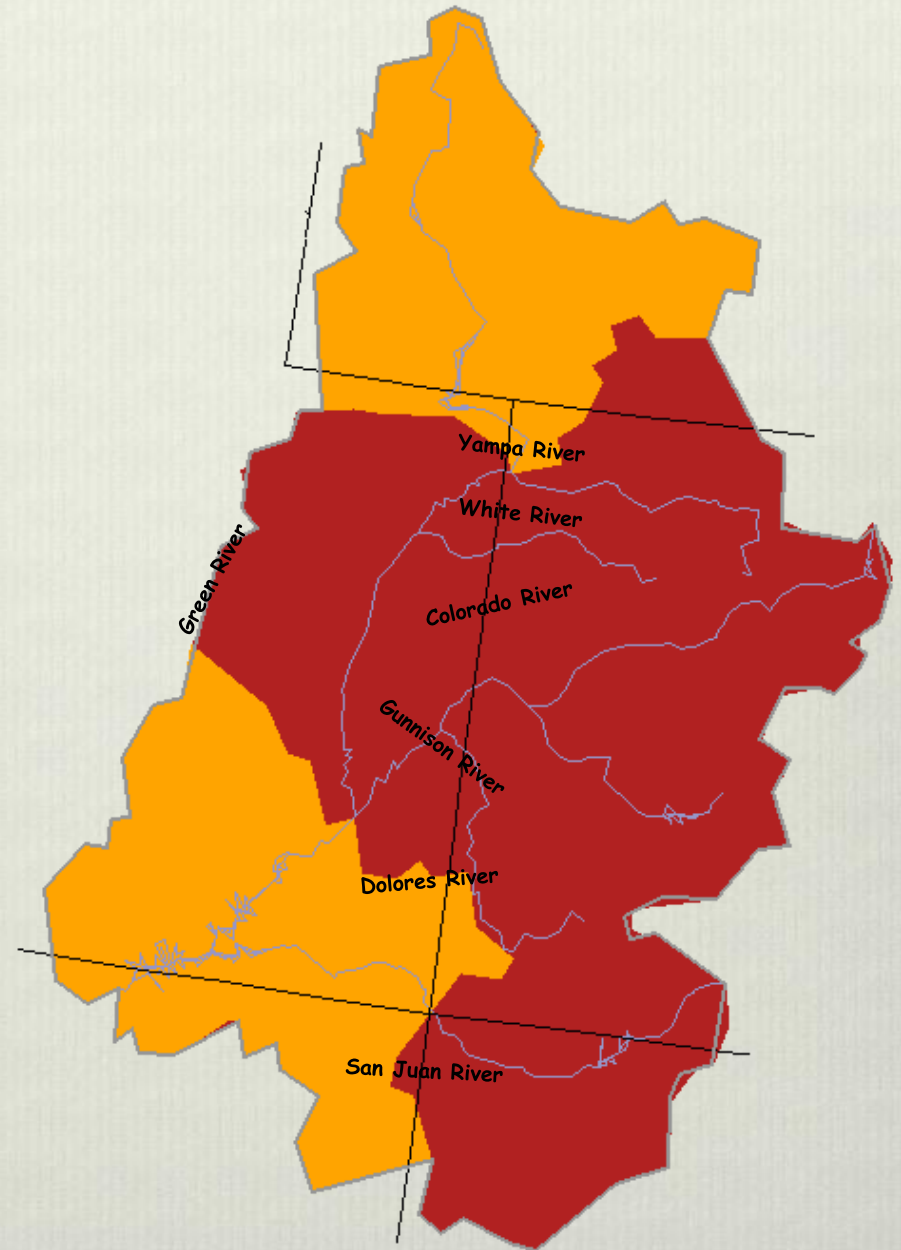


7-day average discharge compared to historical discharge for the day of the year (June 3rd)

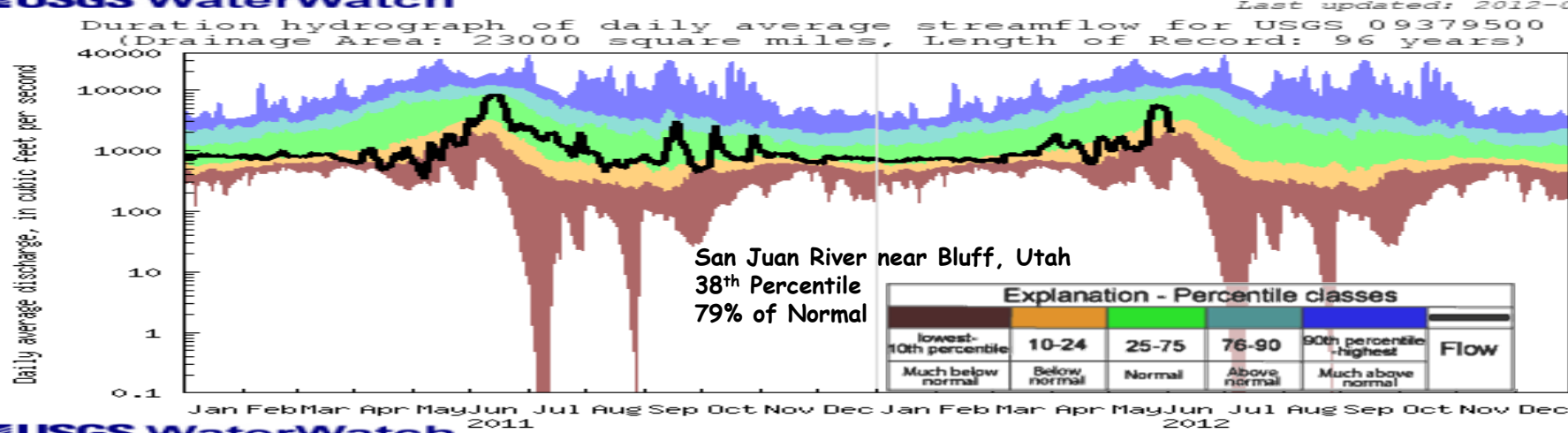
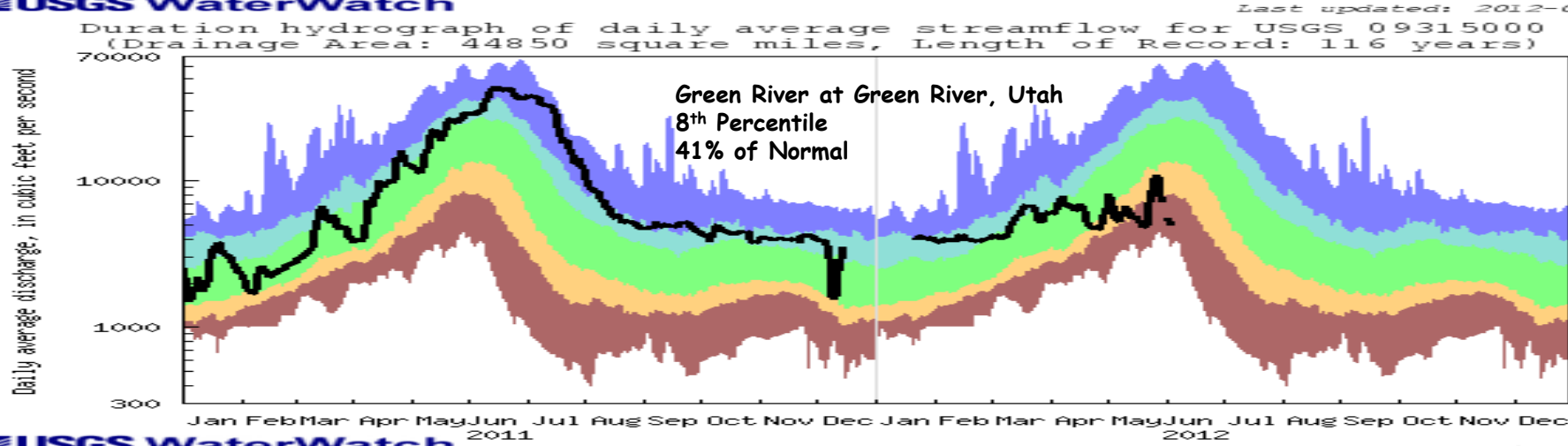
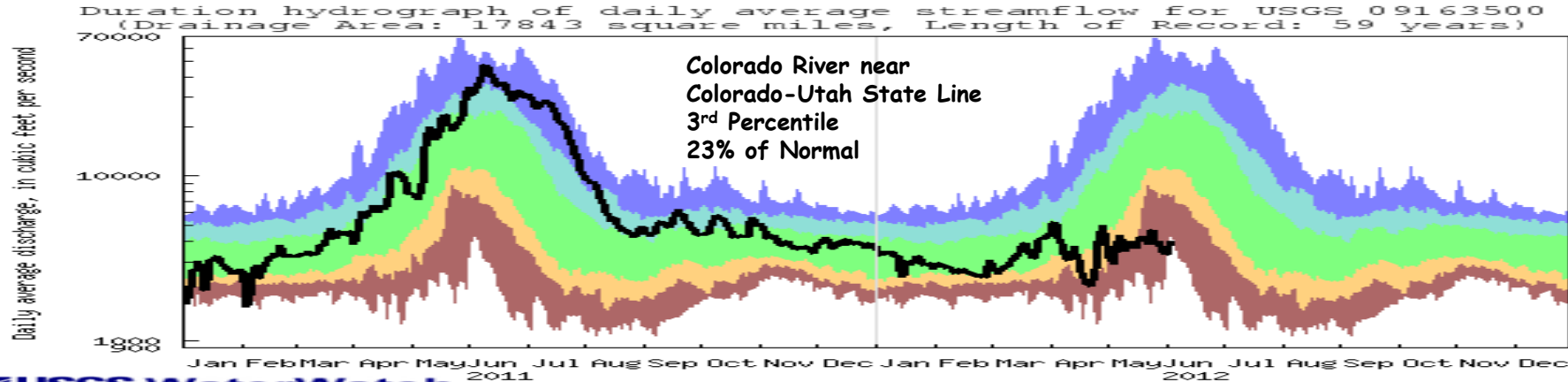


Explanation - Percentile classes							
Low	<10	10-24	25-75	76-90	>90	High	Not-ranked
	Much below normal	Below normal	Normal	Above normal	Much above normal		

# 7-day average discharge compared to historical discharge for the day of the year (June 3)

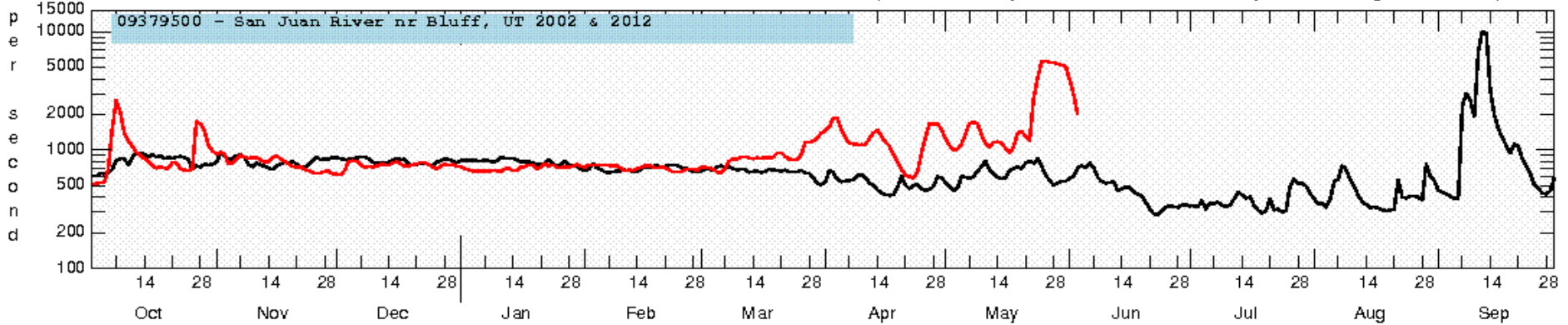
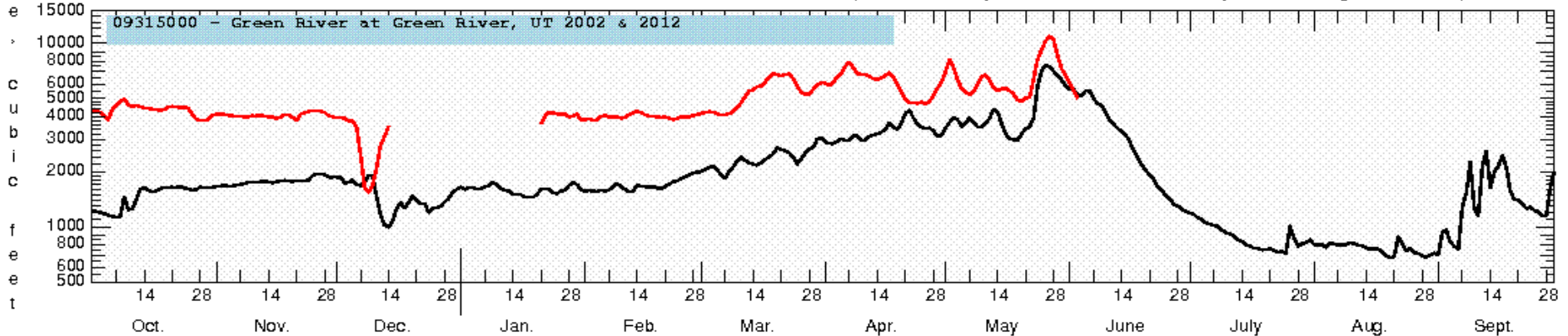
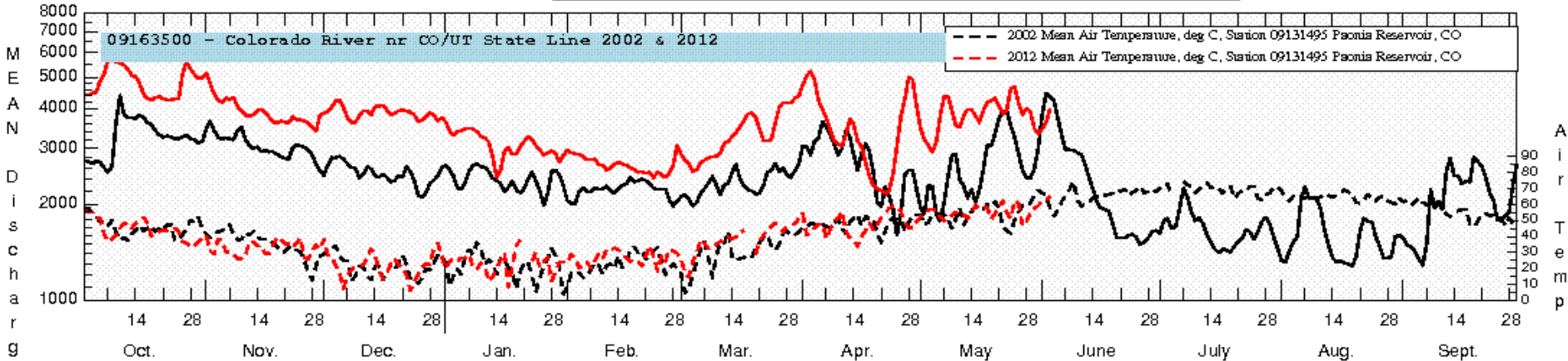


Explanation - Percentile classes						
Low	<10	10-24	25-75	76-90	>90	High
	Much below normal	Below normal	Normal	Above normal	Much above normal	



# Colorado River Basin 2002 vs. 2012 Mean Daily Discharge Comparison at Select Stations

— Water Year 2002 Mean Daily Discharge  
— Water Year 2012 Mean Daily Discharge (Provisional)

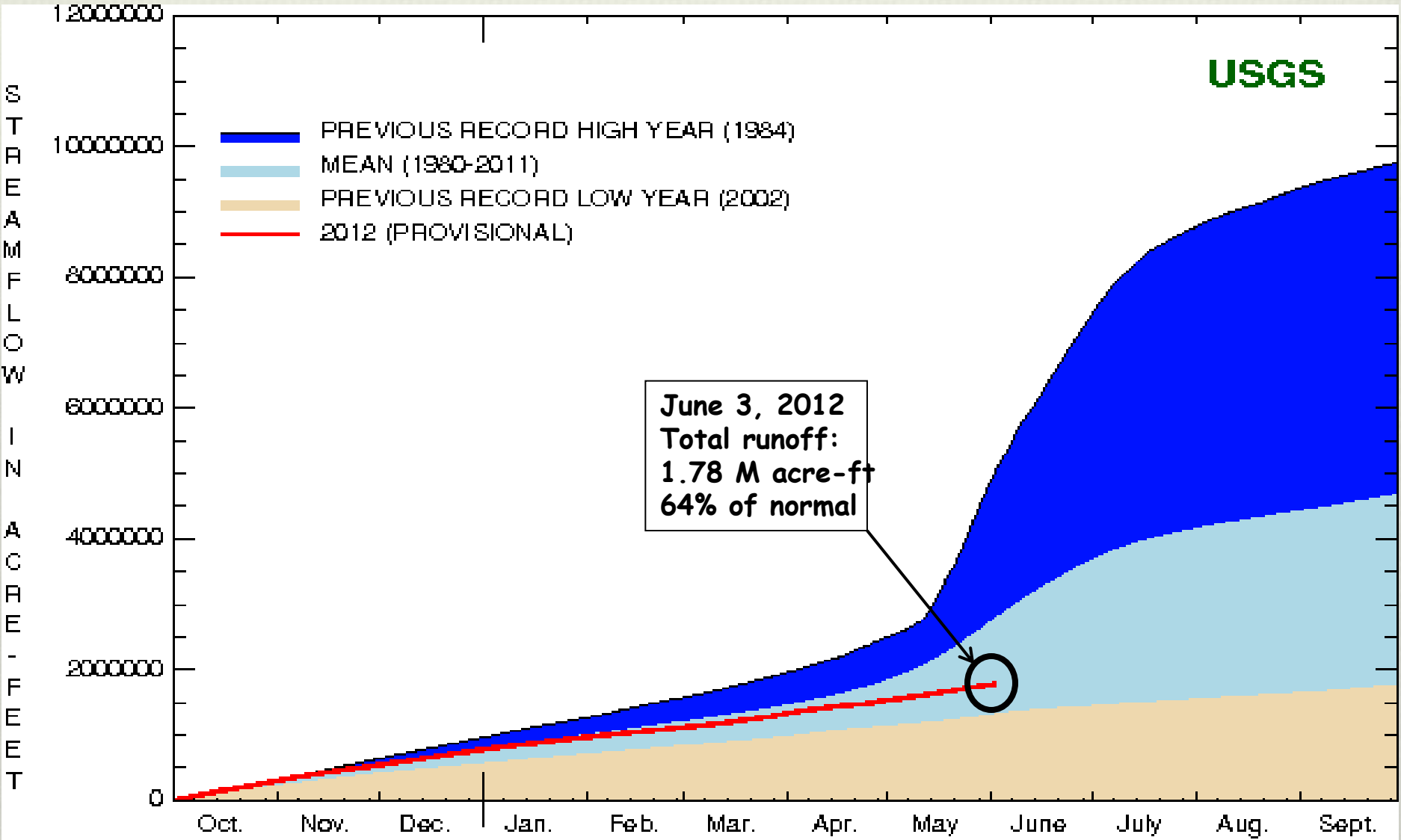


# Total Streamflow Volume Colorado River nr CO/UT State Line Oct 1, 2011 to June 3, 2012

USGS

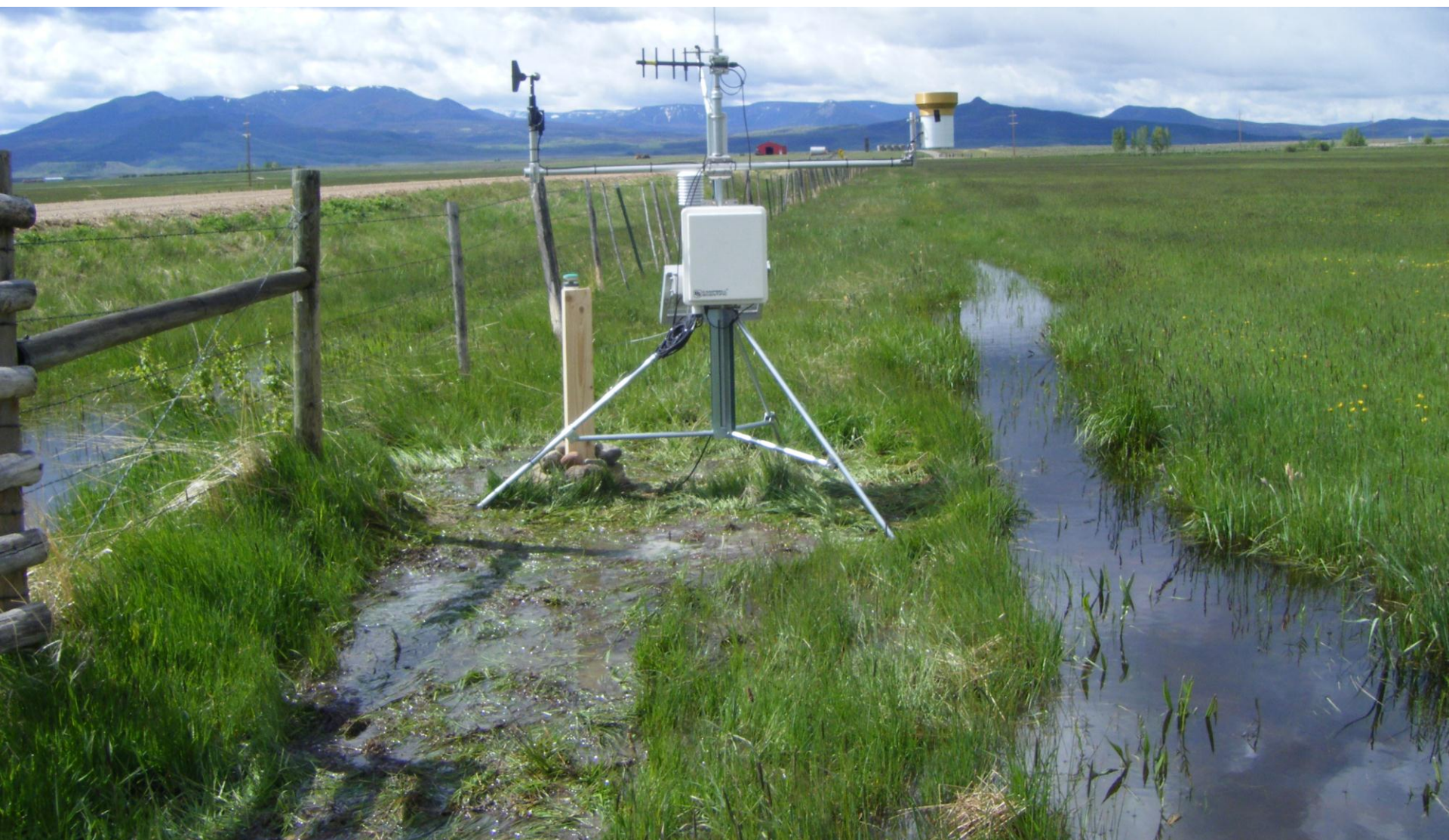
- PREVIOUS RECORD HIGH YEAR (1984)
- MEAN (1980-2011)
- PREVIOUS RECORD LOW YEAR (2002)
- 2012 (PROVISIONAL)

June 3, 2012  
Total runoff:  
1.78 M acre-ft  
64% of normal

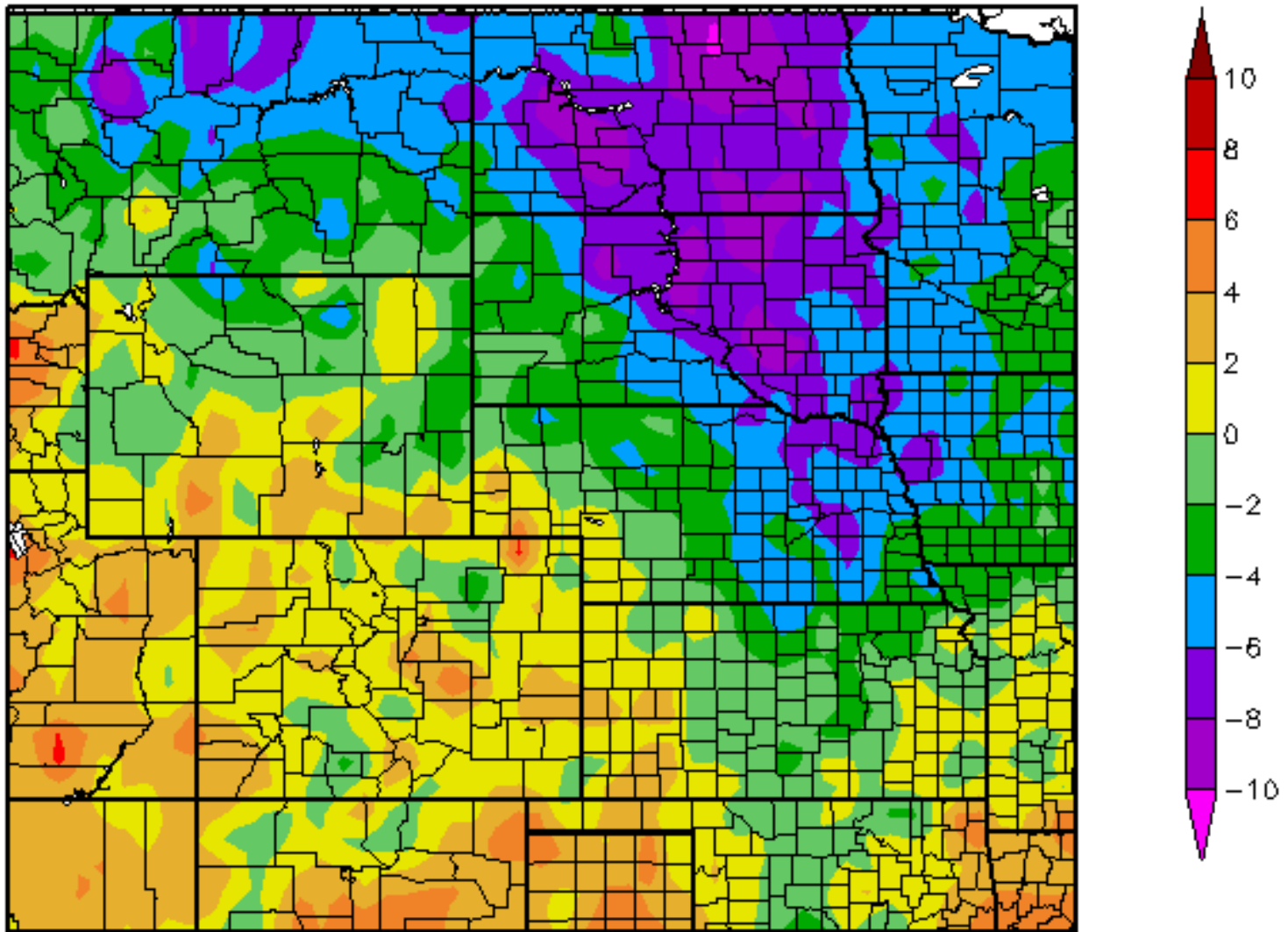


COLORADO RIVER NEAR COLORADO-UTAH STATELINE

# Water Demand



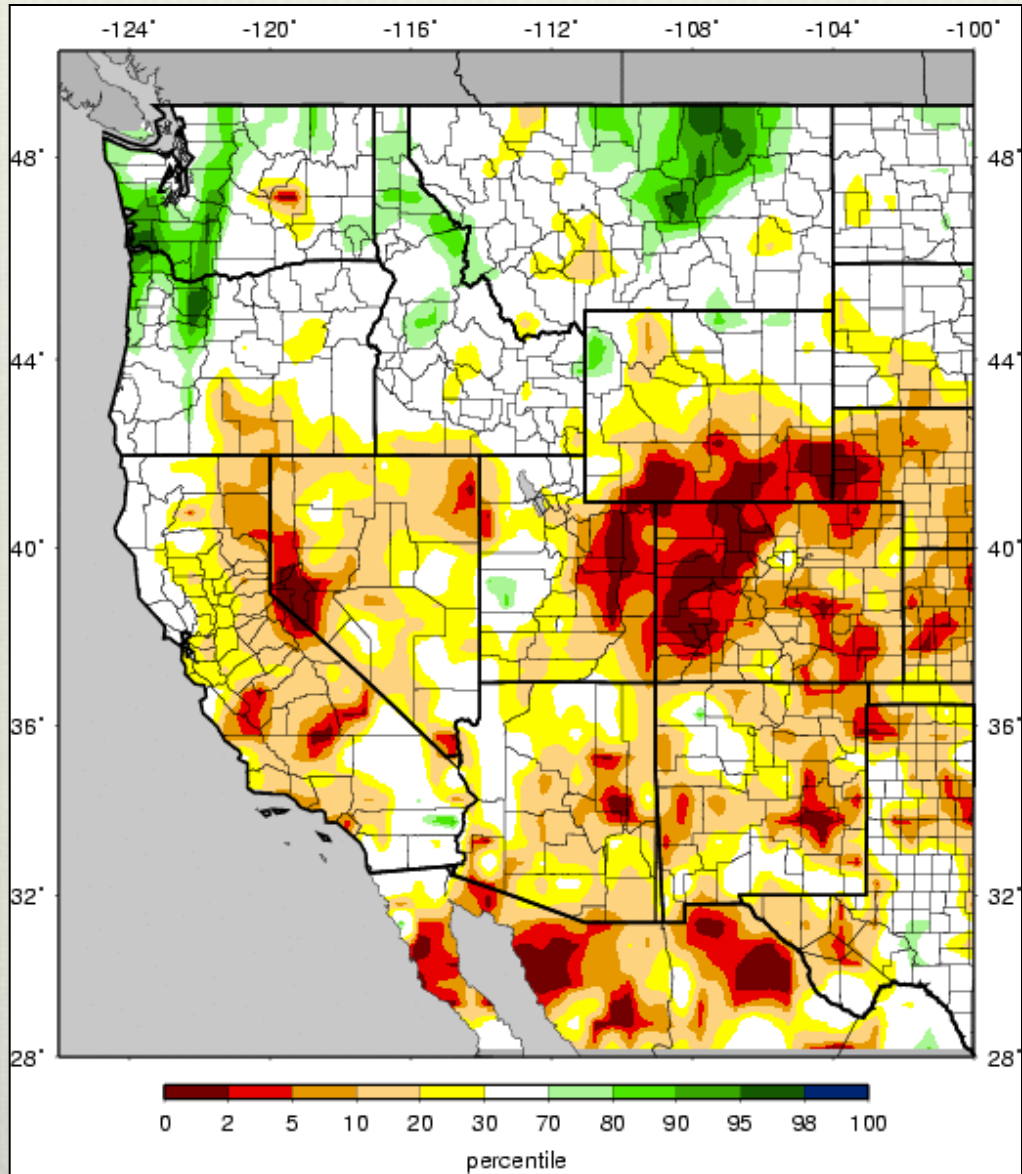
# Temperature Departure from Normal 05/28/2012 – 06/03/2012





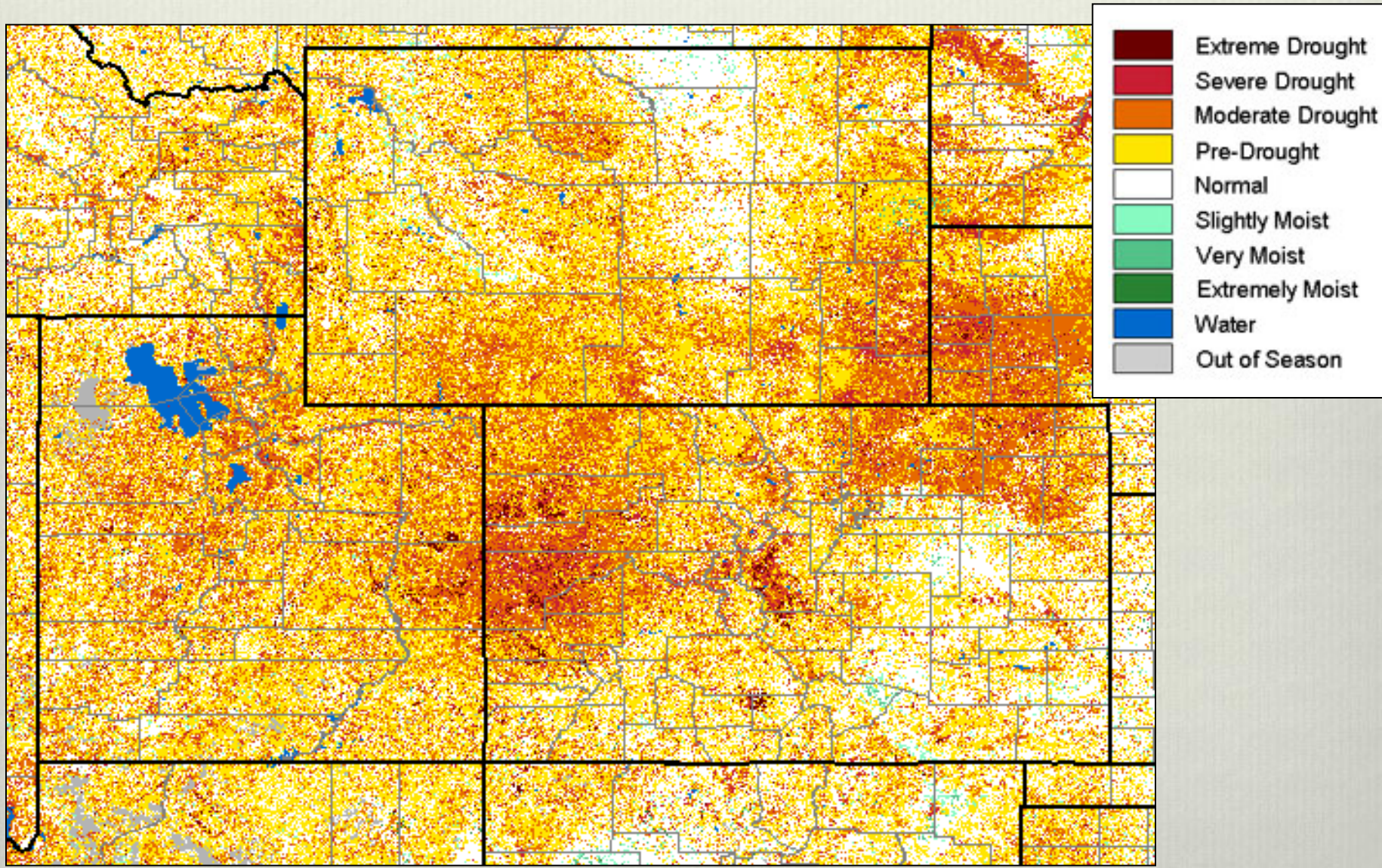
# VIC Soil Moisture

## 3 June 2012



# eMODIS VegDRI Vegetation

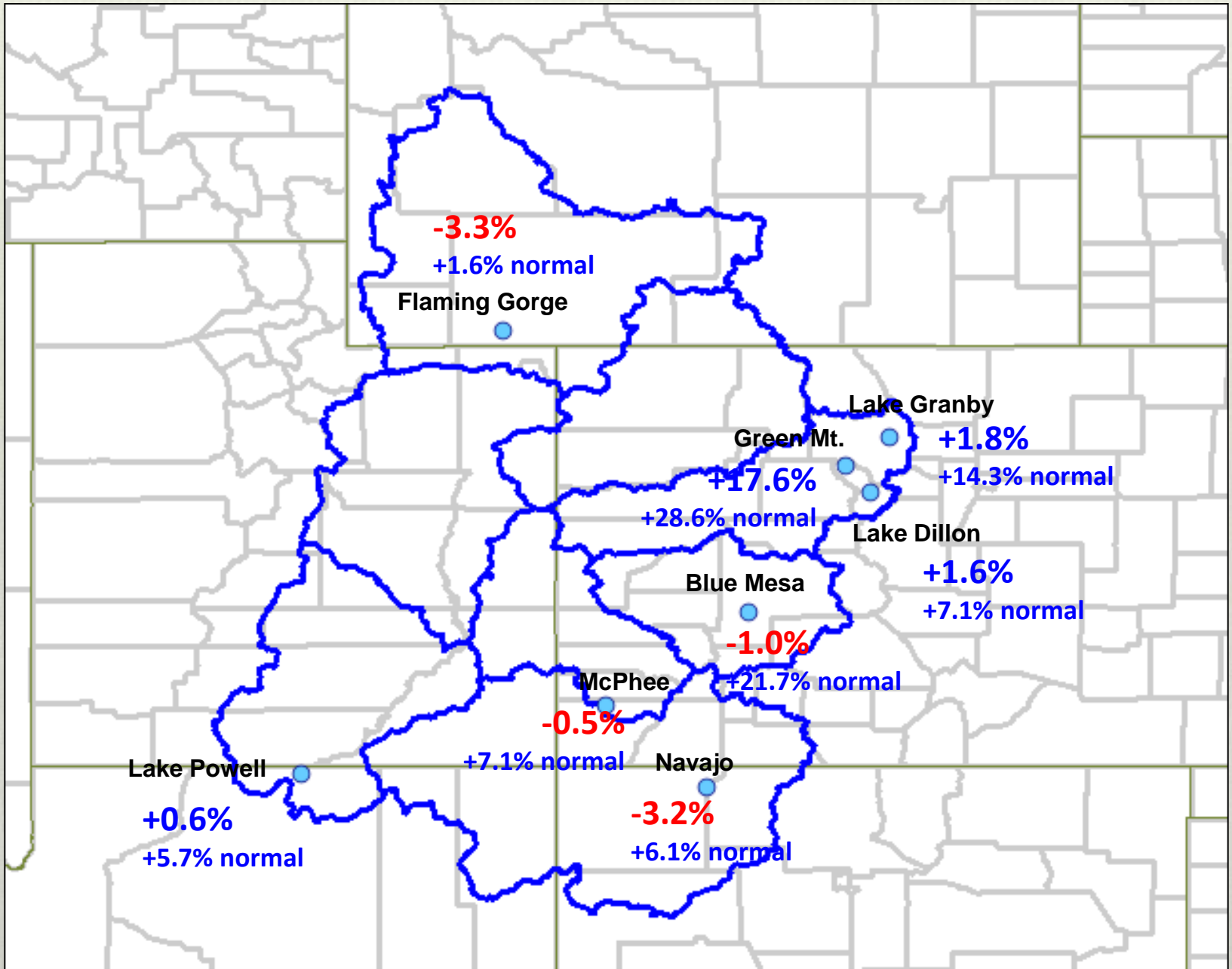
## 3 June 2012



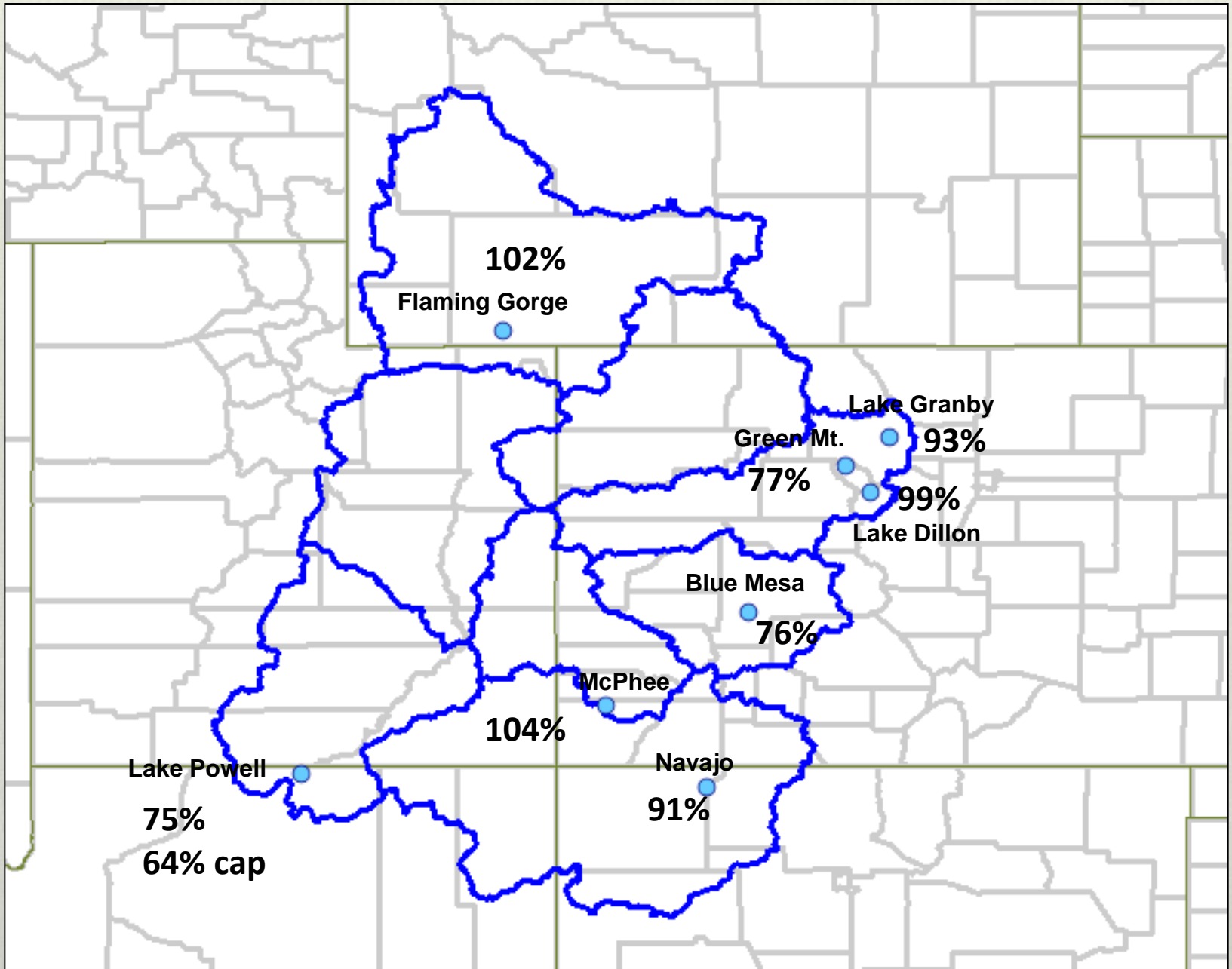
# Reservoir Update



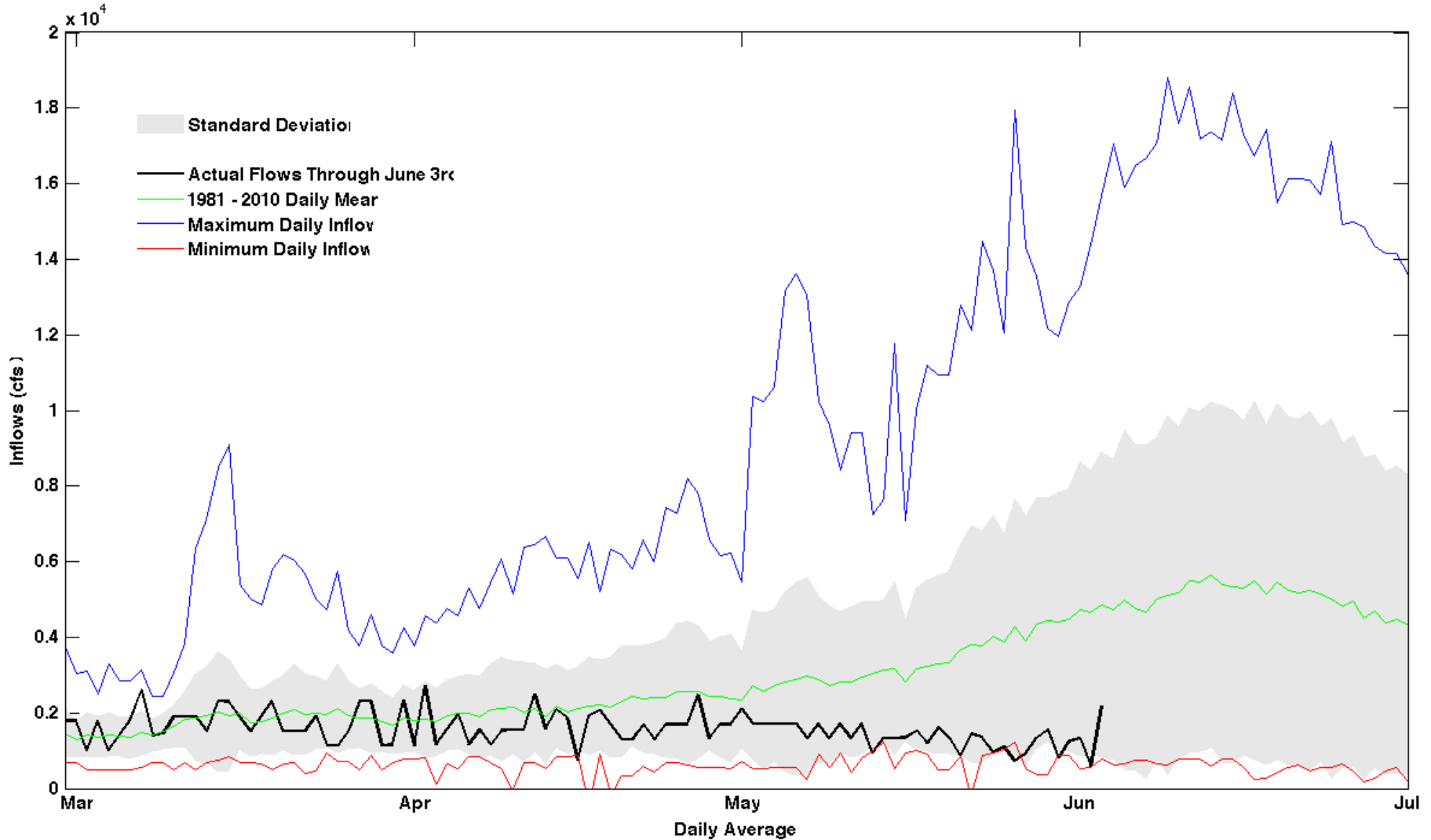
# May Reservoir Storage Volume Change



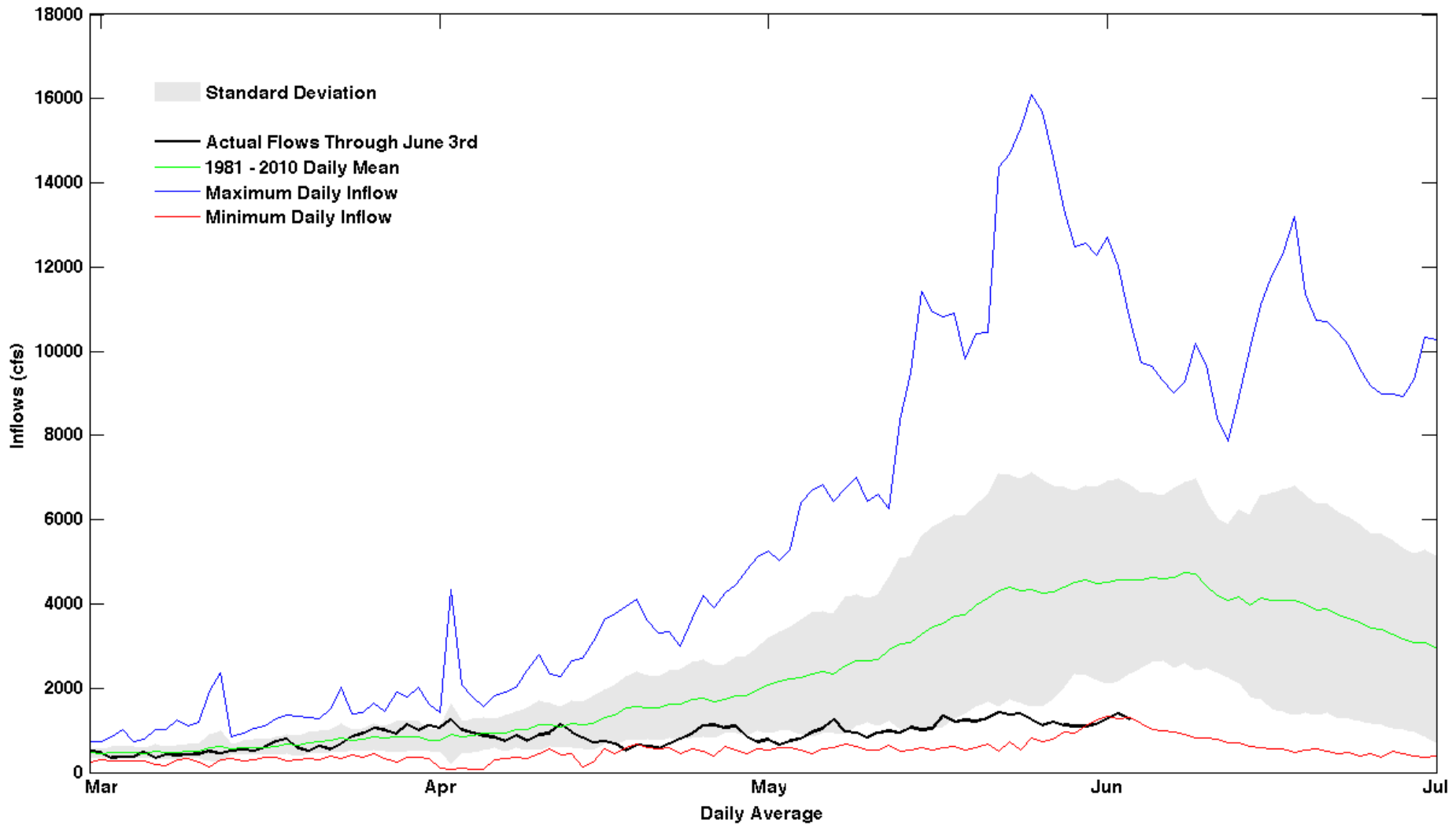
# June Average Reservoir Storage Volume



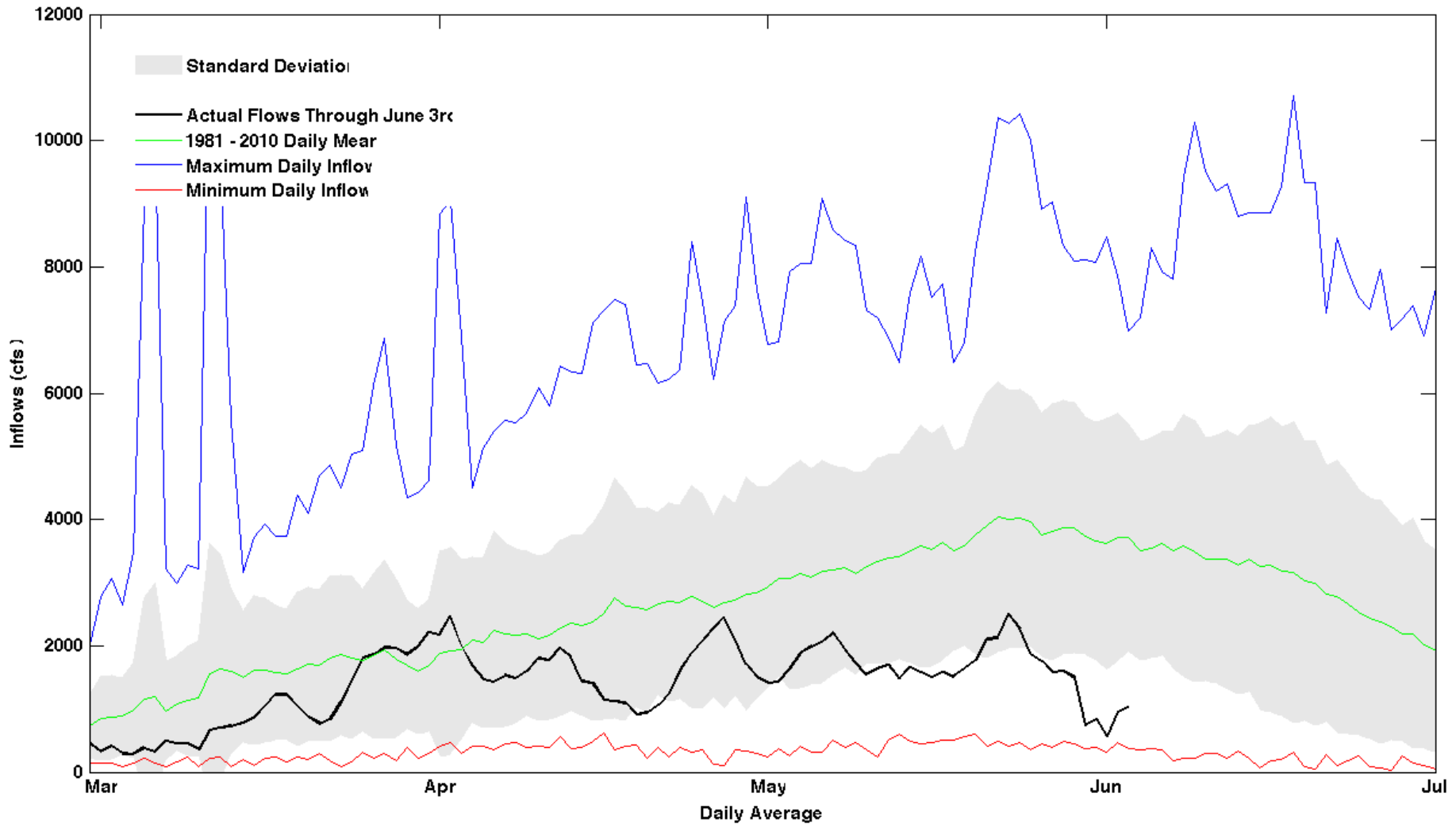
# Daily Inflows into Flaming Gorge



# Daily Inflows into Blue Mesa

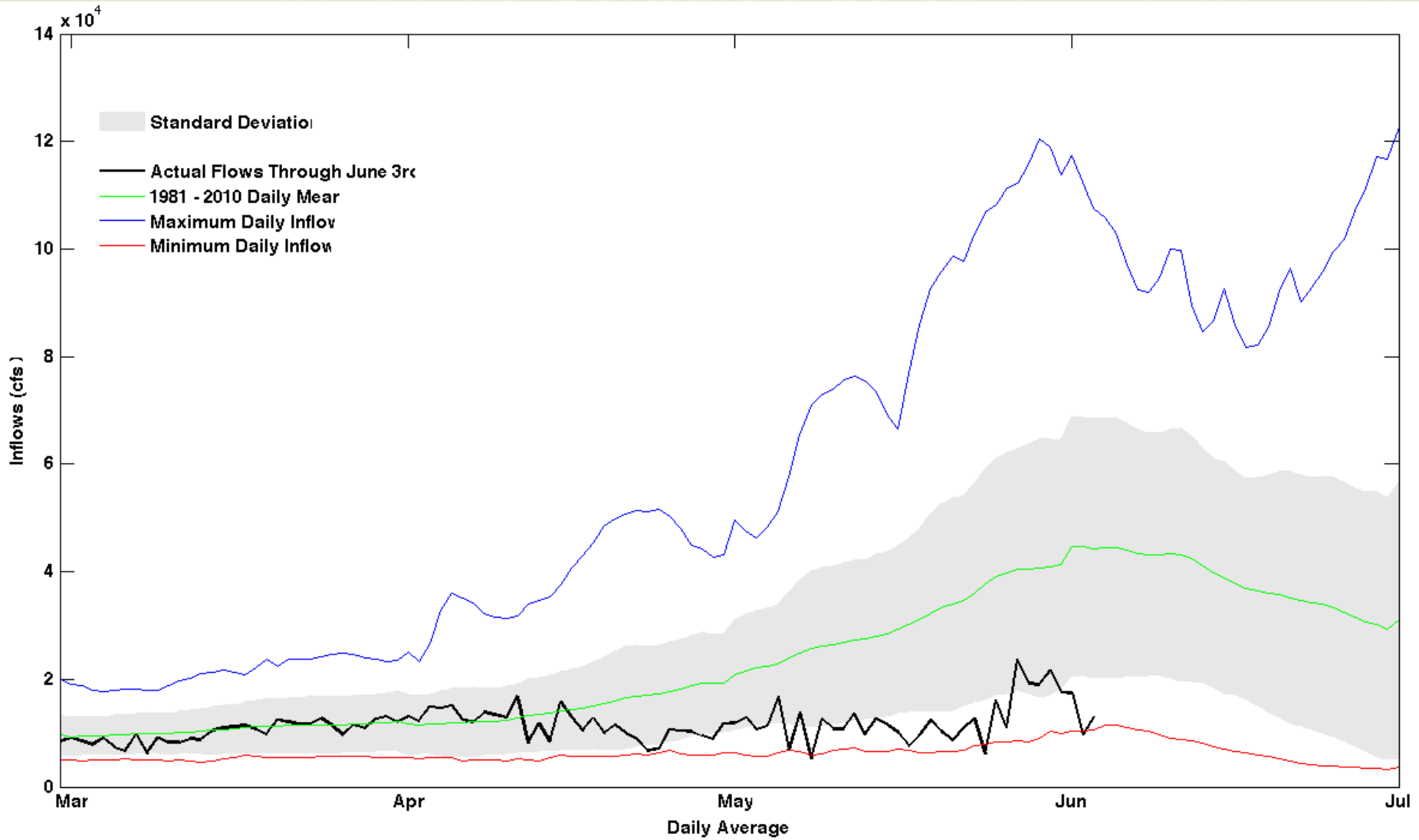


# Daily Inflows into Navajo



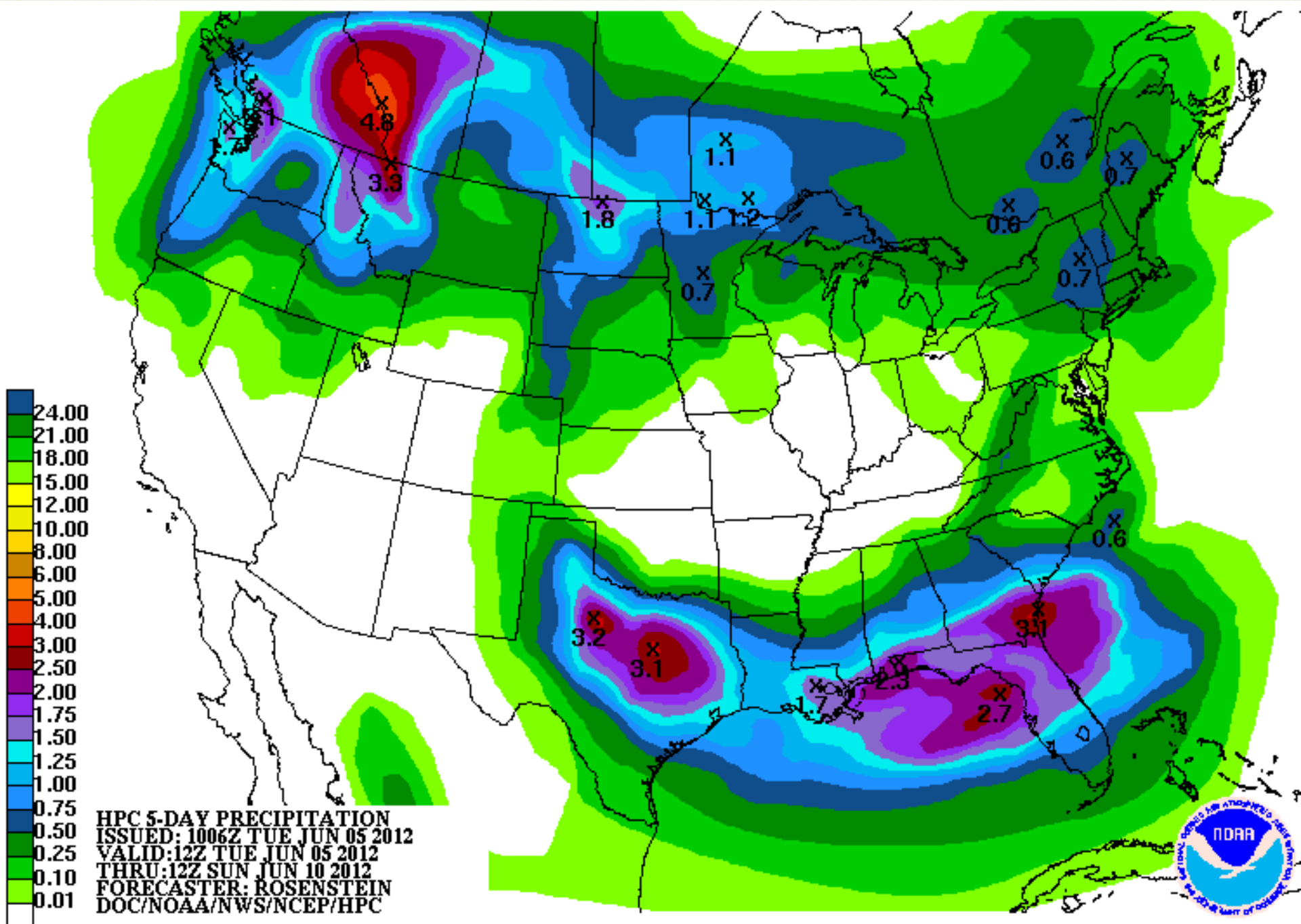


# Daily Inflows into Lake Powell

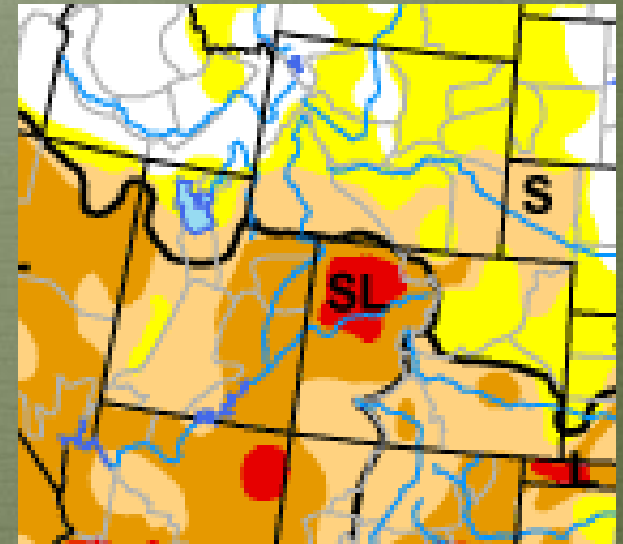
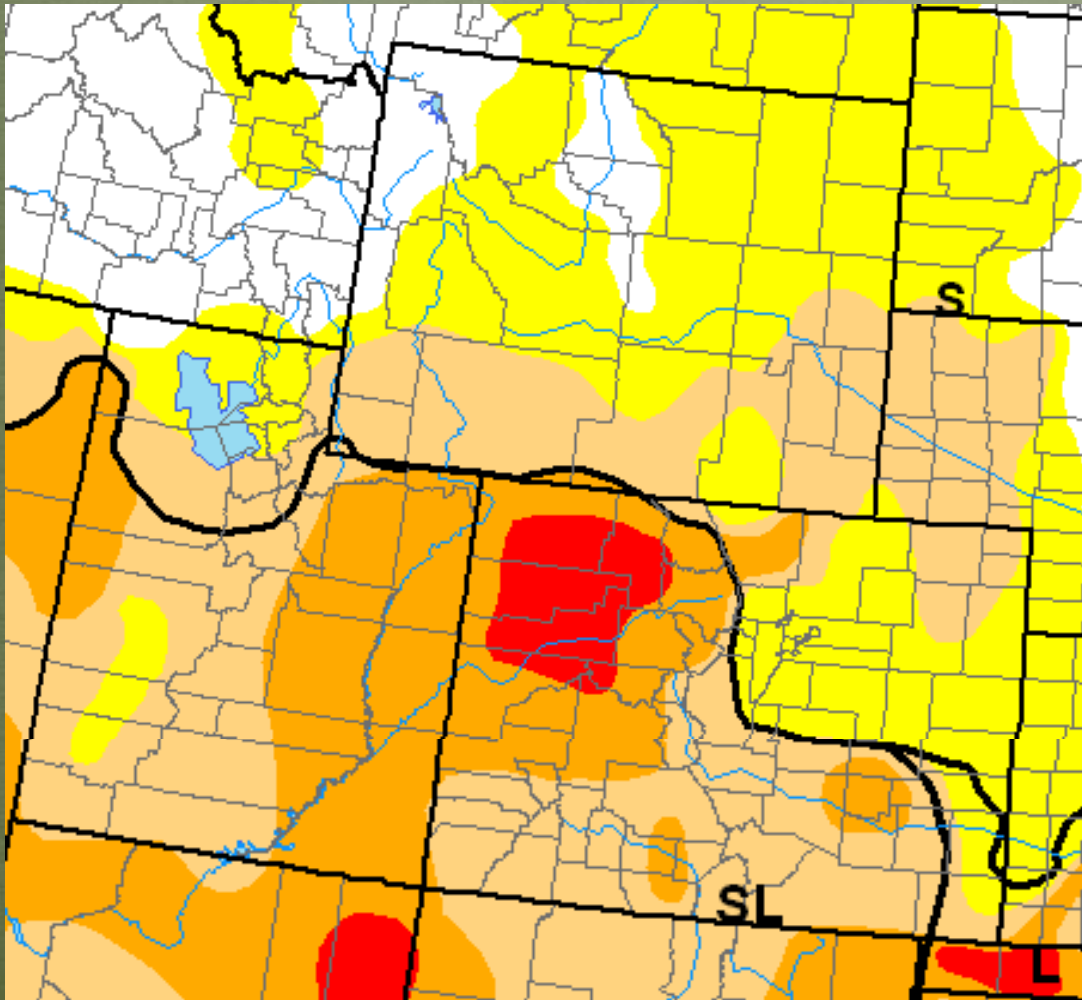


# Precipitation Forecast





# Recommendations



Updated Impact Lines

**O  
F  
N  
I**



**CONTACT:**

**COLORADO CLIMATE CENTER**

**COLORADO STATE UNIVERSITY**

**FORT COLLINS, CO 80523**

**970 - 491 - 8545**

**NIDIS - UPPER COLORADO BASIN PILOT PROJECT**

**F o r m o r e i n f o r m a t i o n**