

**Summer
2011**

July 12th, 2011



Weekly Colorado Drought Assessment

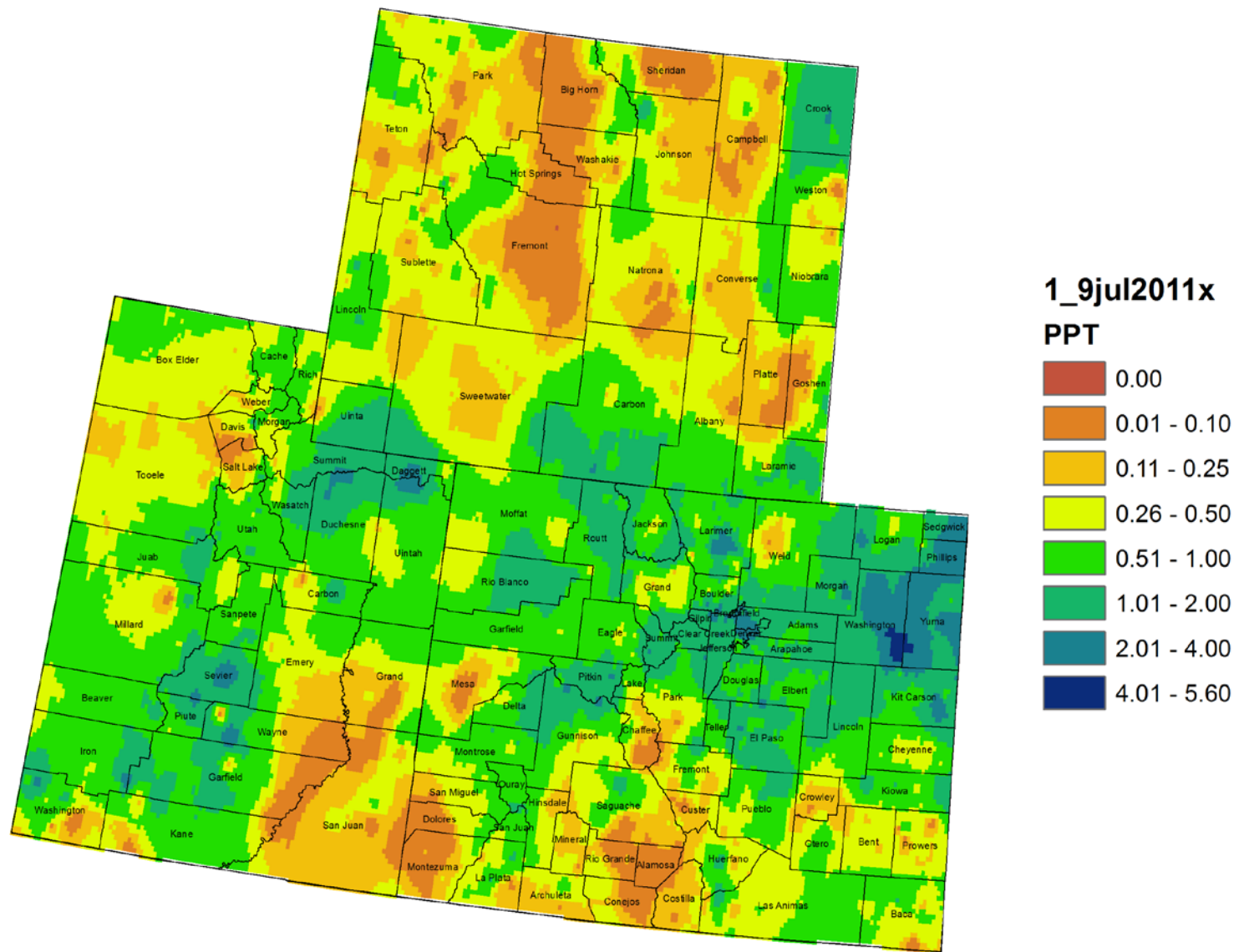
Today's Agenda

- Assessment of current water conditions
- Precipitation Forecast
- Recommendations for Drought Monitor

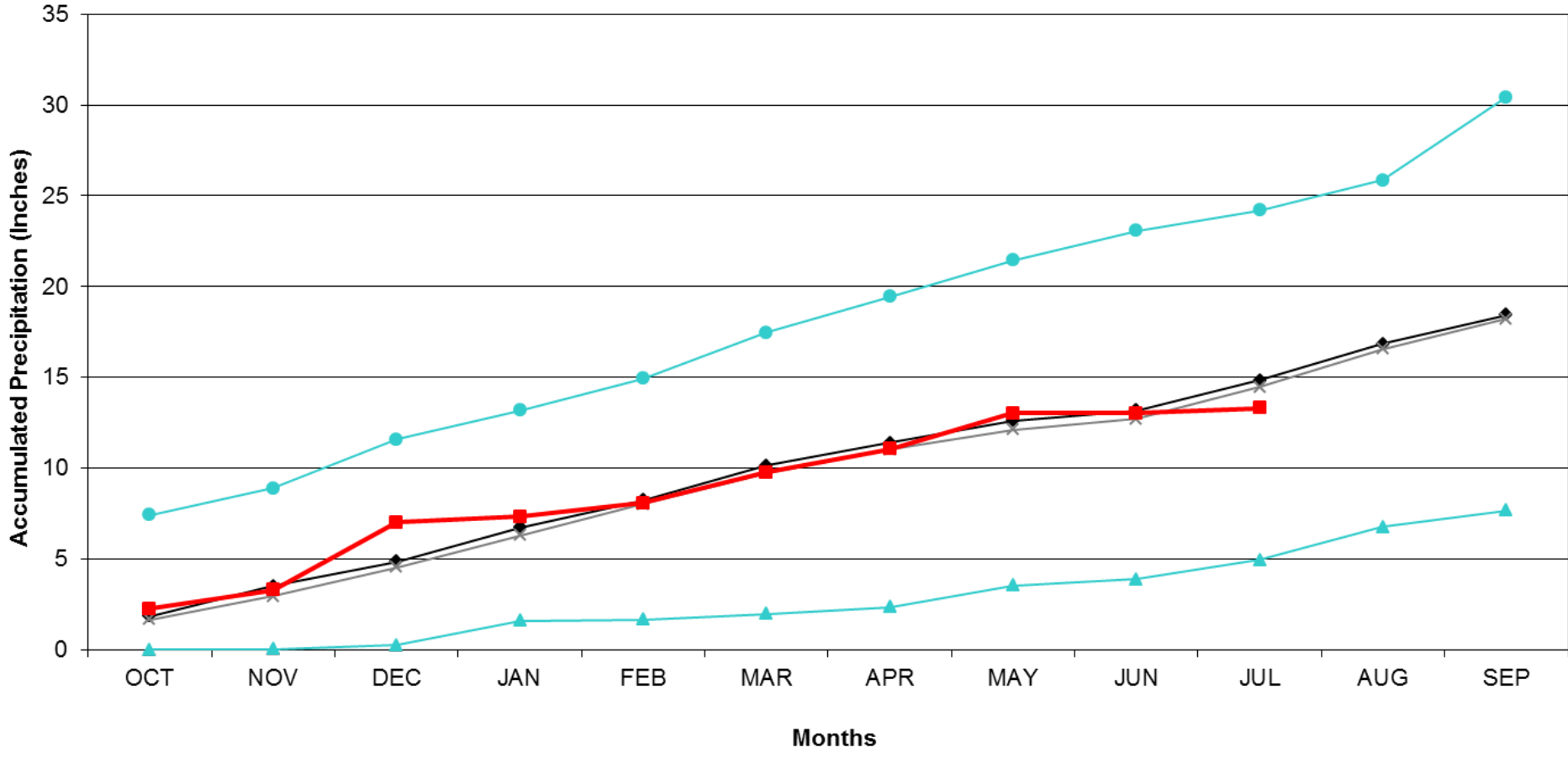
Precipitation/Snowpack Update



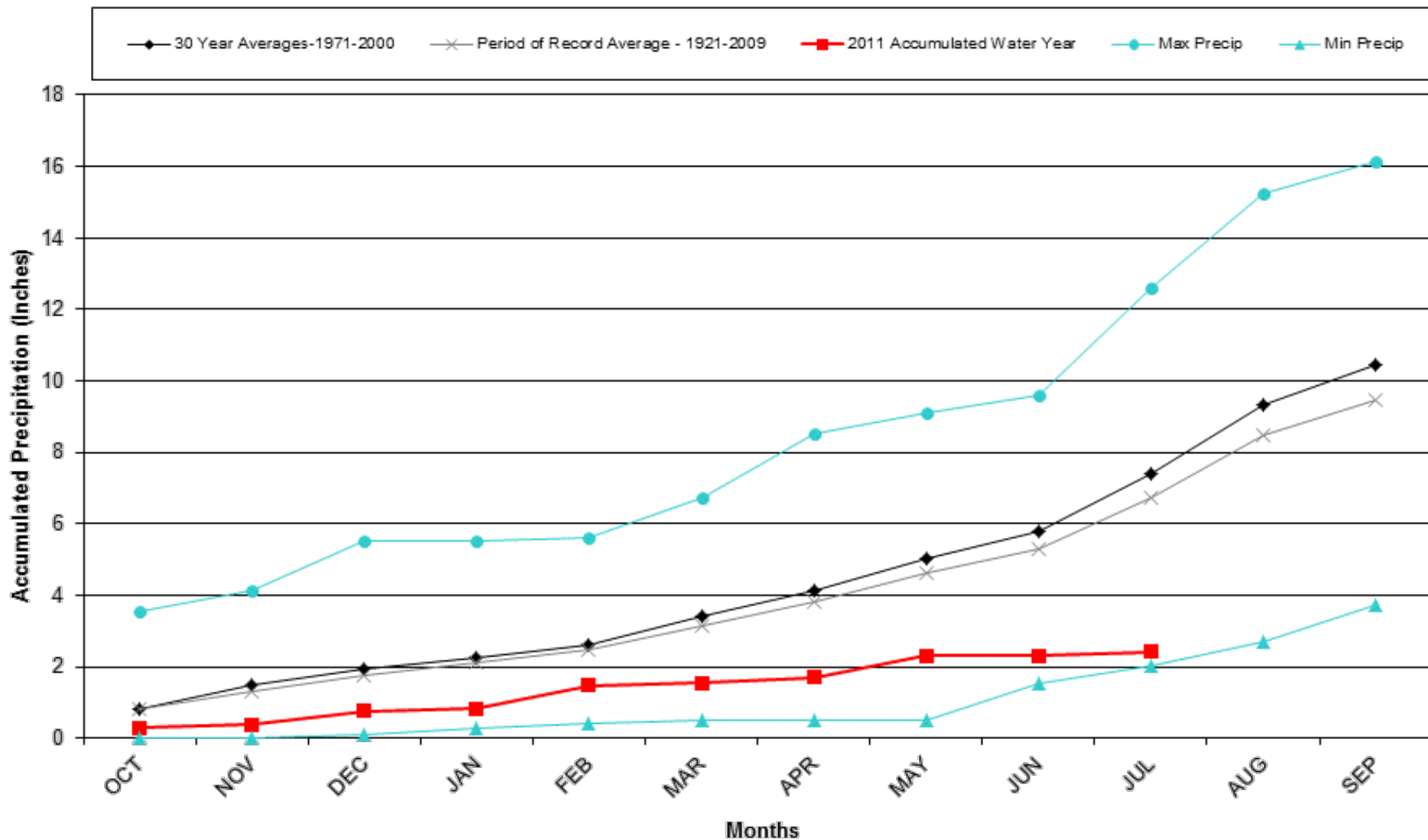
Colorado, Utah and Wyoming July Month to Date Precipitation 1 - 9 July 2011



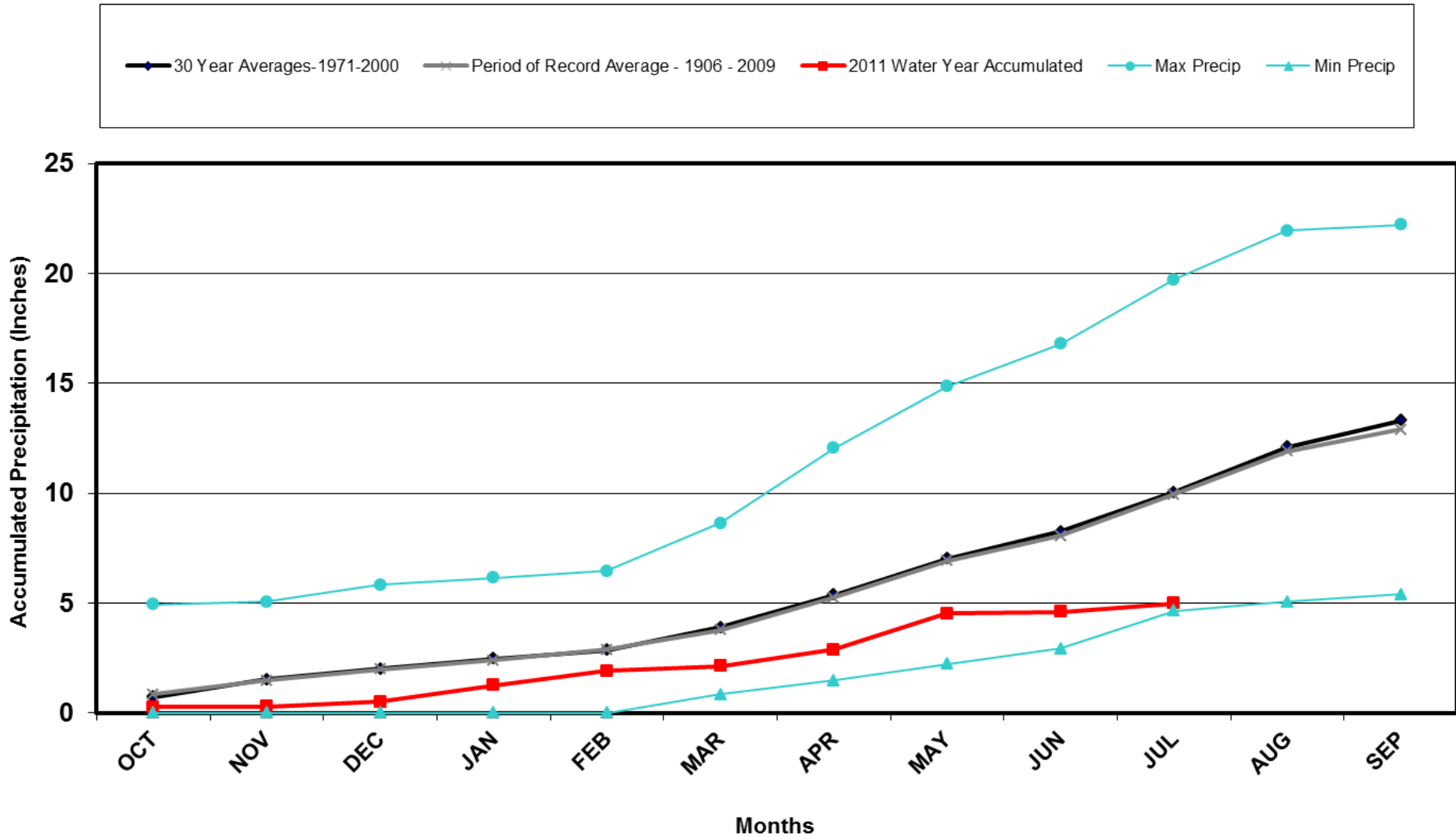
Mesa Verde NP 2011 Water Year



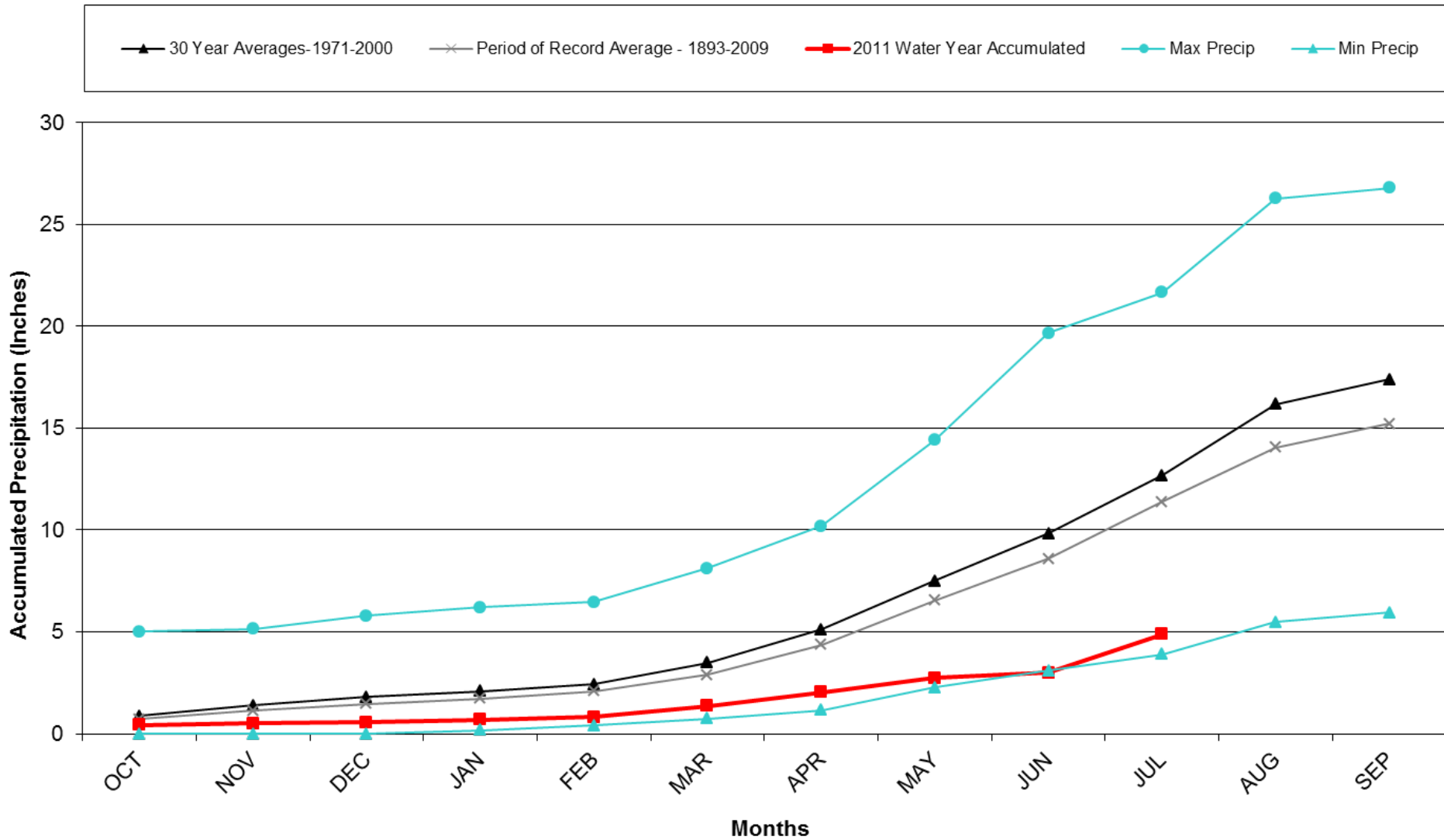
Del Norte 2011 Water Year



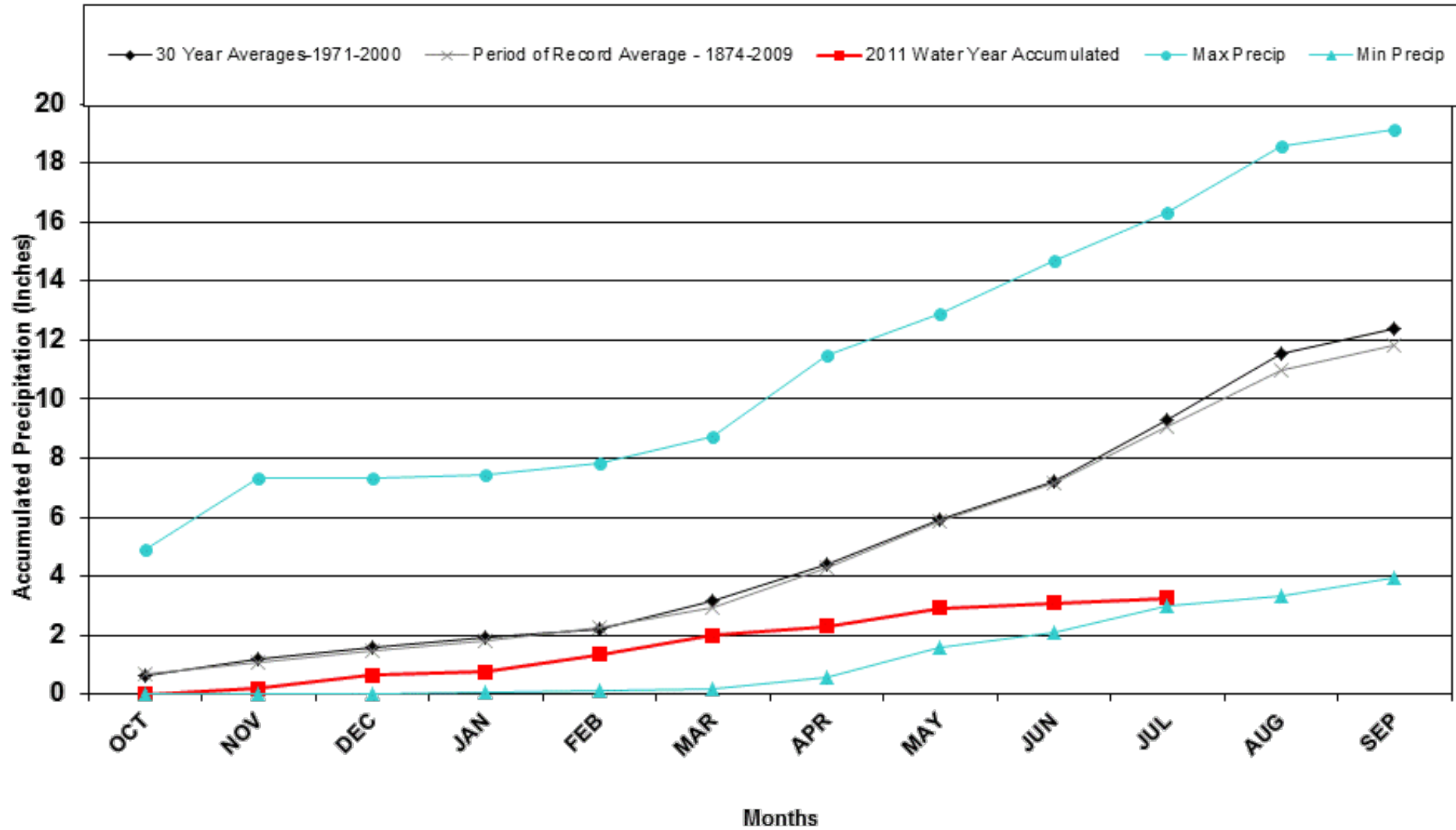
Canon City 2011 Water Year



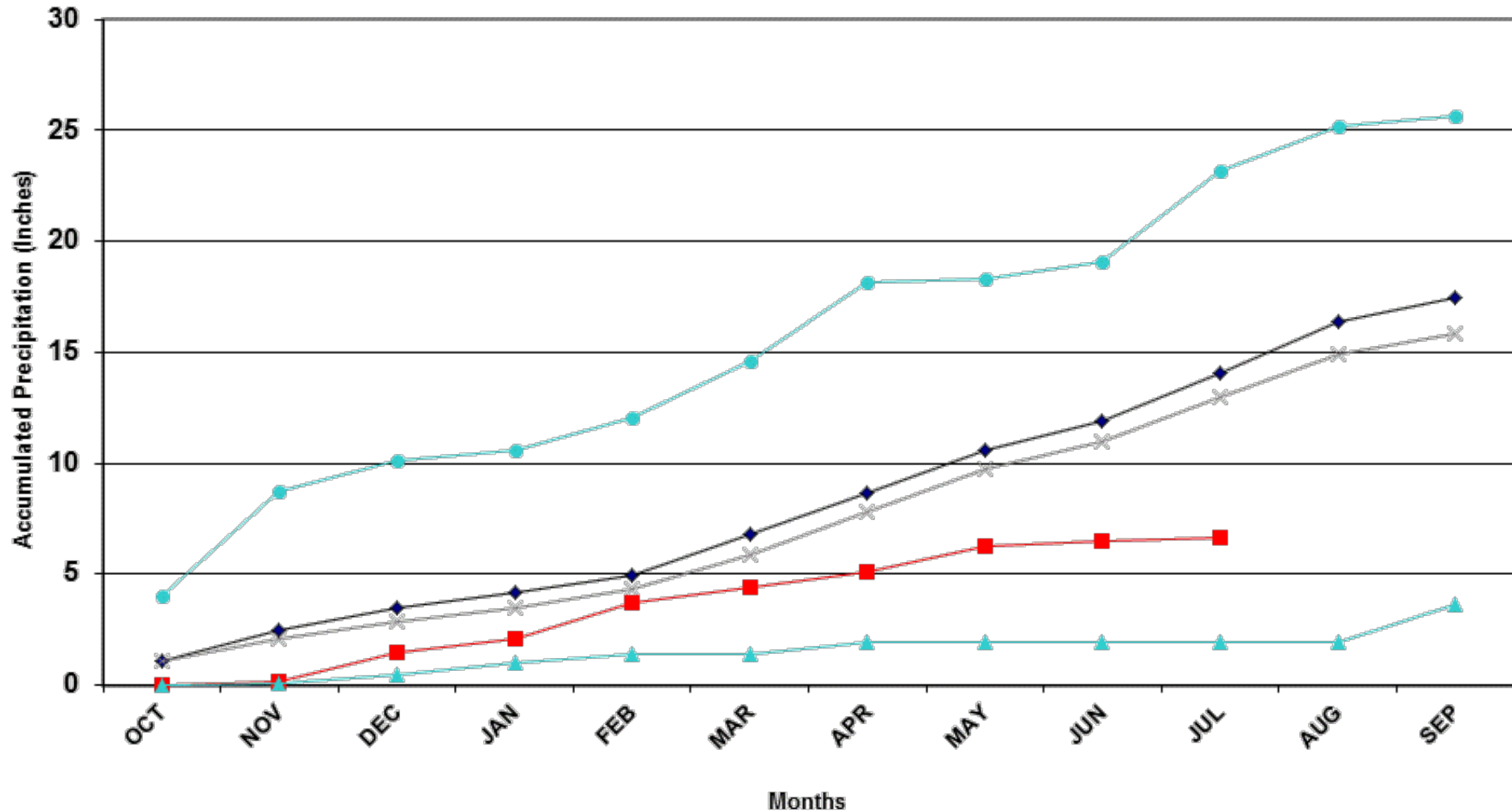
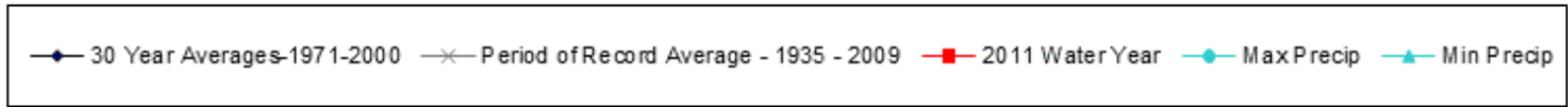
Colorado Springs 2011 Water Year



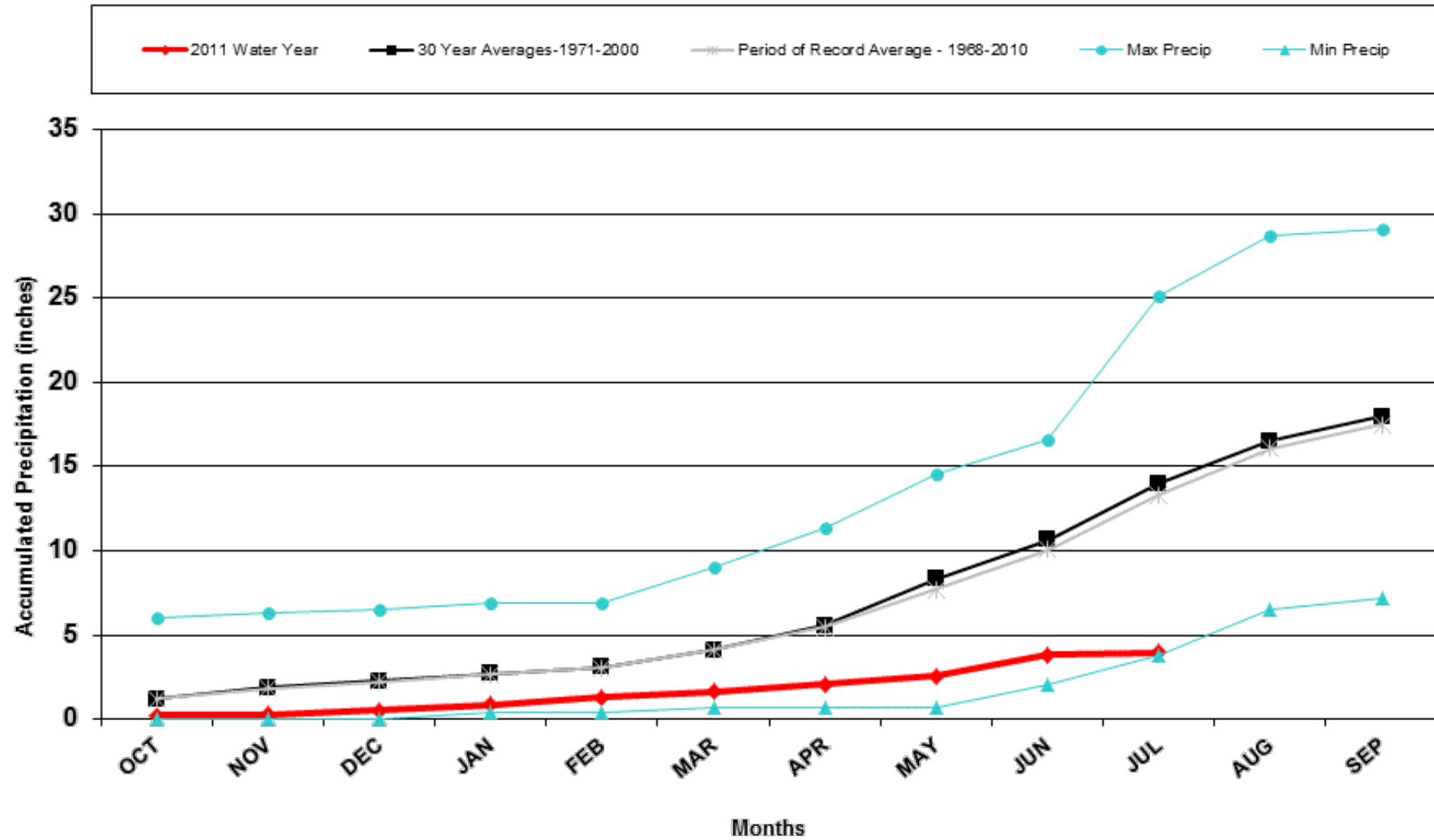
Pueblo WSO 2011 Water Year



Walsenburg 2011 Water Year

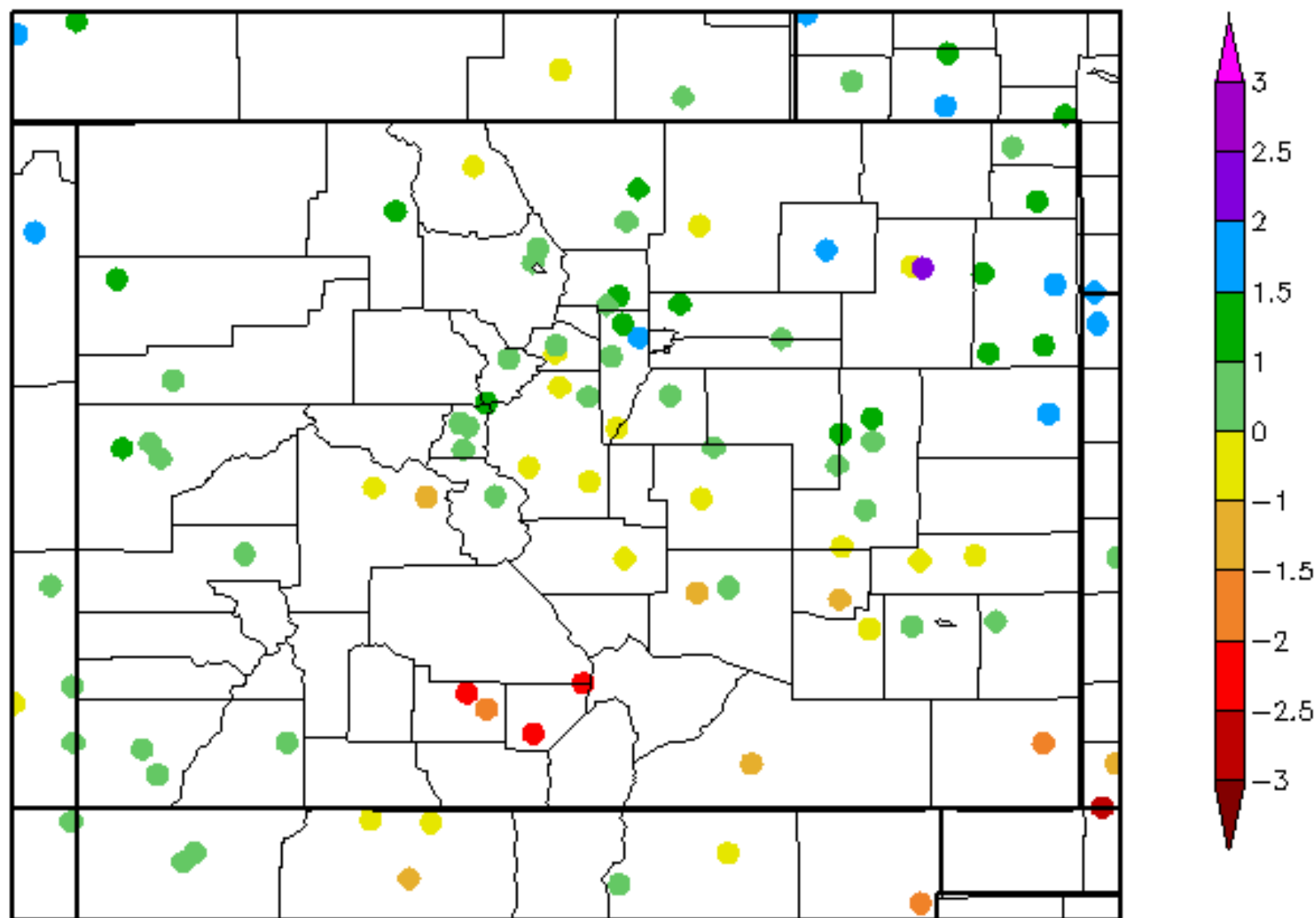


Walsh 2011 Water Year



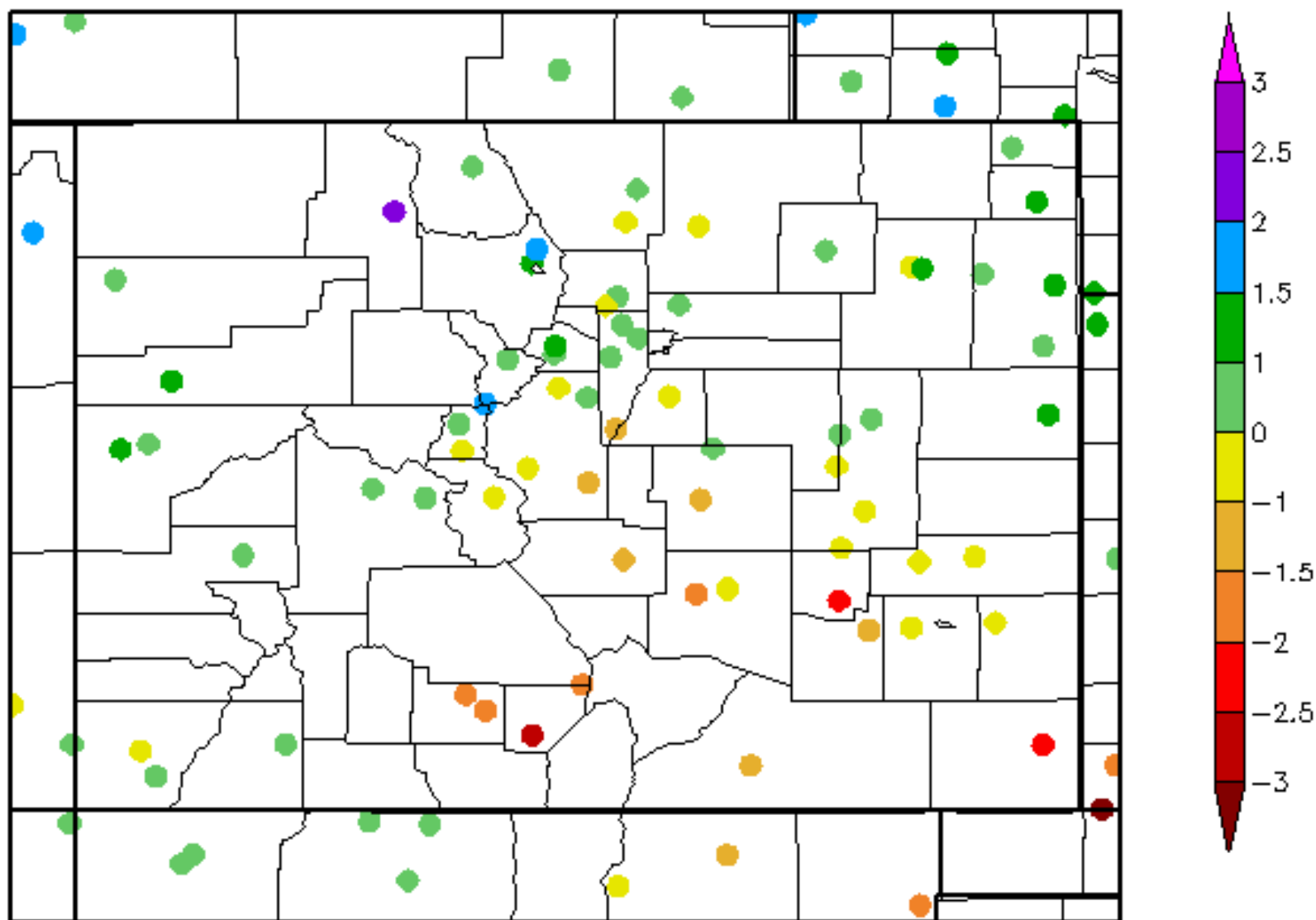
60 Day SPI

5/13/2011 - 7/11/2011



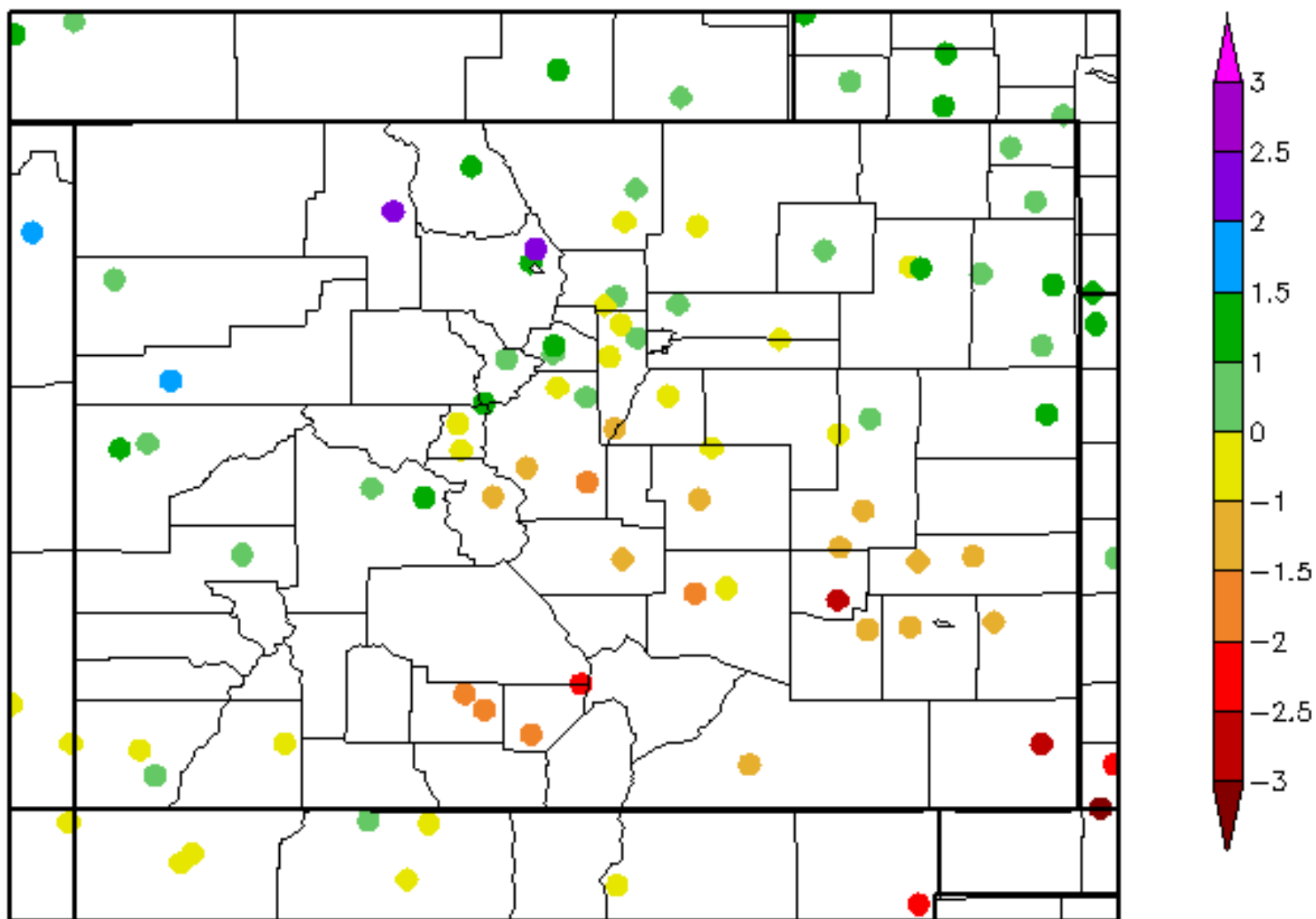
120 Day SPI

3/14/2011 - 7/11/2011



9 Month SPI

10/12/2010 - 7/11/2011



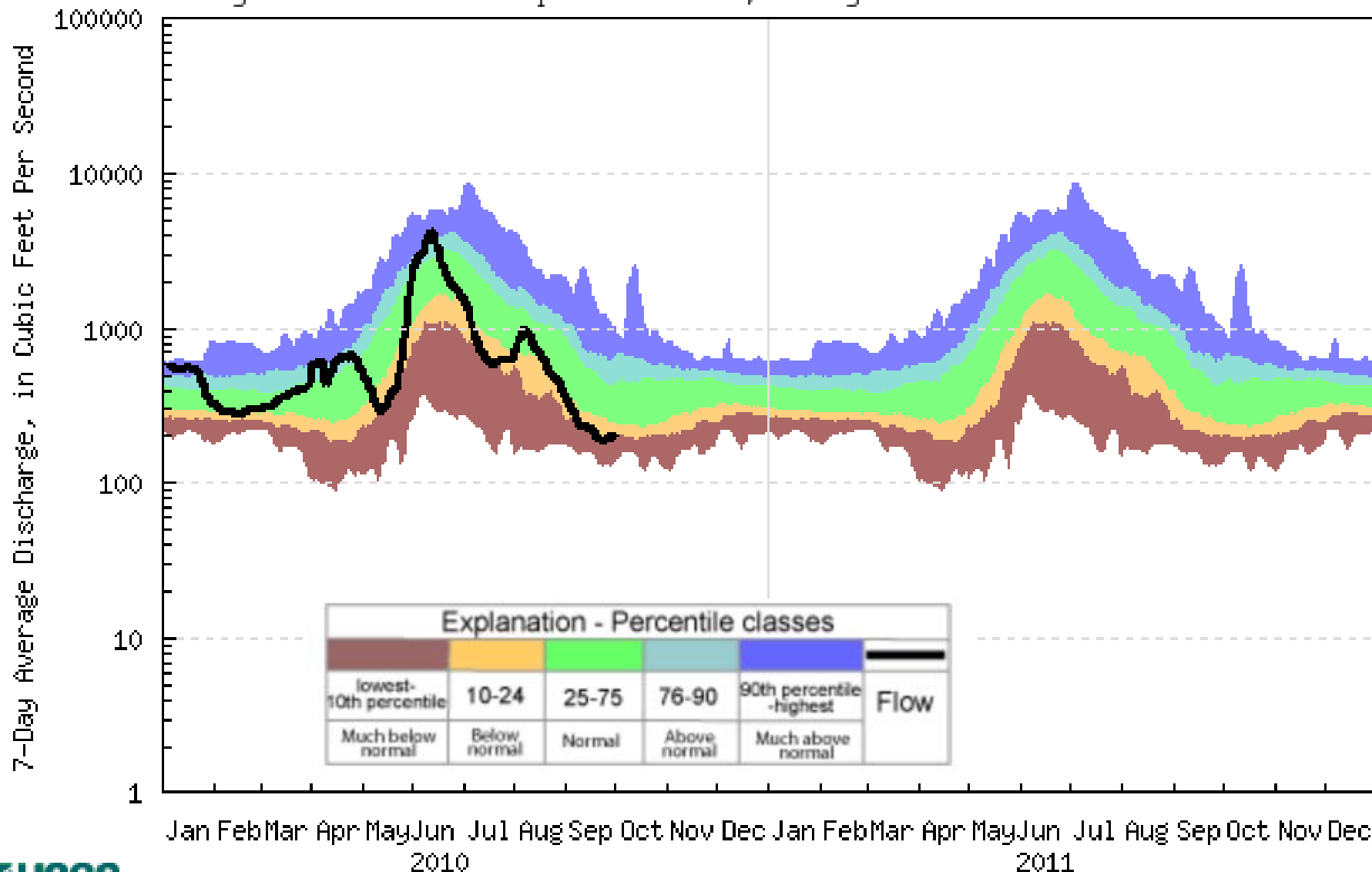
Streamflow Update



Arkansas @ Canon City, CO

USGS 07096000 ARKANSAS RIVER AT CANON CITY, CO.

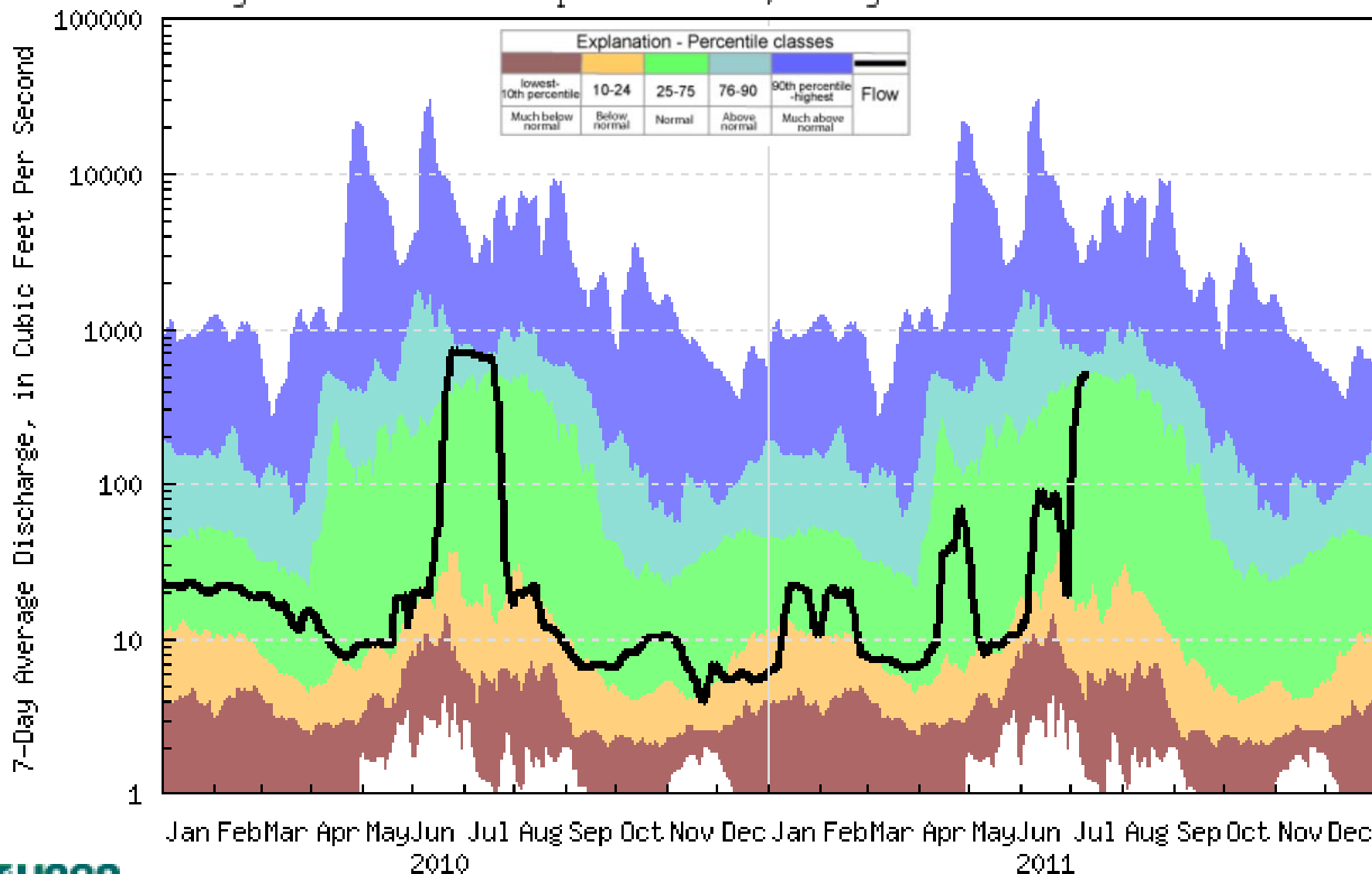
Drainage Area: 3117 Square Miles, Length of Record: 119 Years



Arkansas @ Lamar, CO

USGS 07133000 ARKANSAS RIVER AT LAMAR, CO.

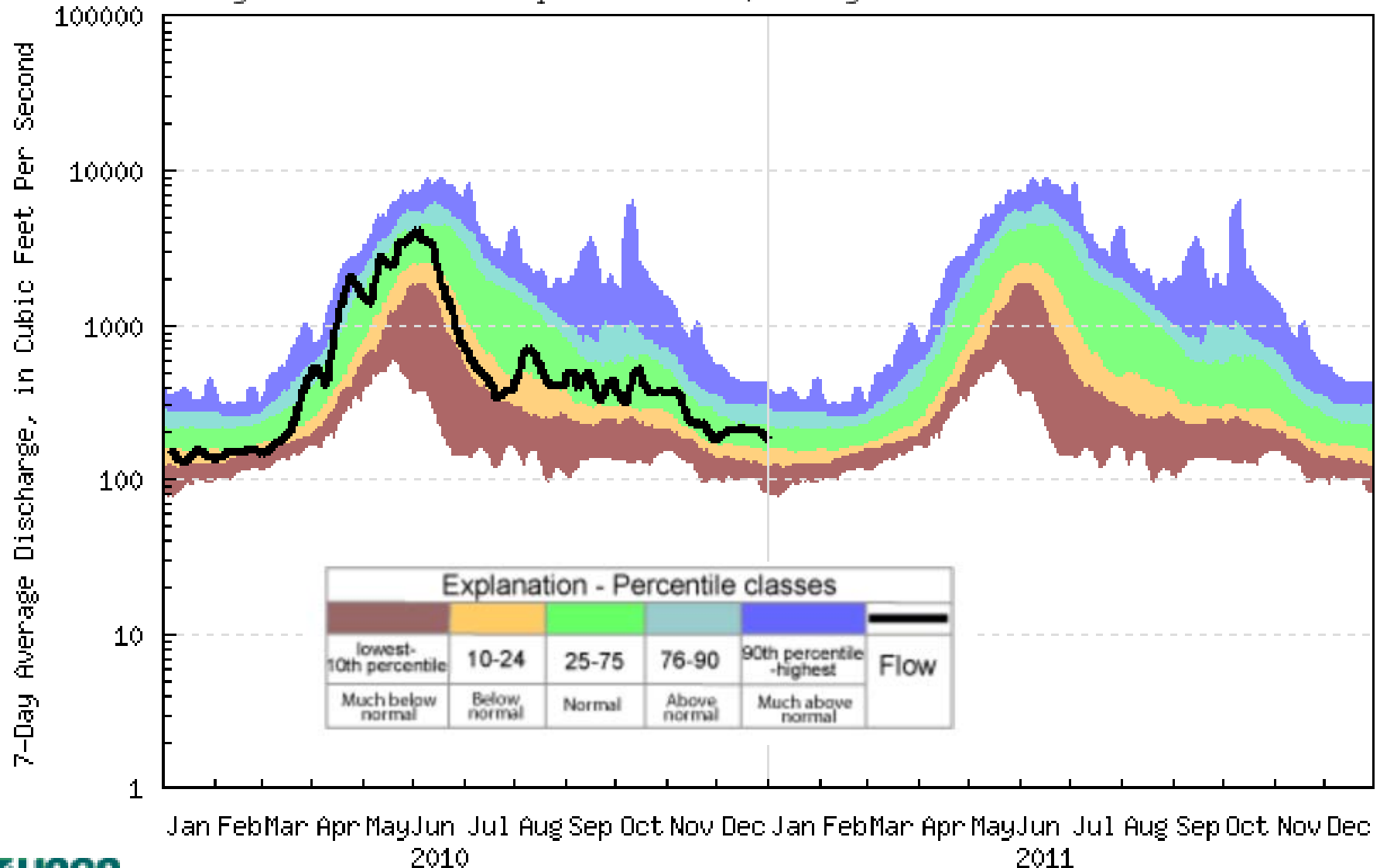
Drainage Area: 19780 Square Miles, Length of Record: 93 Years



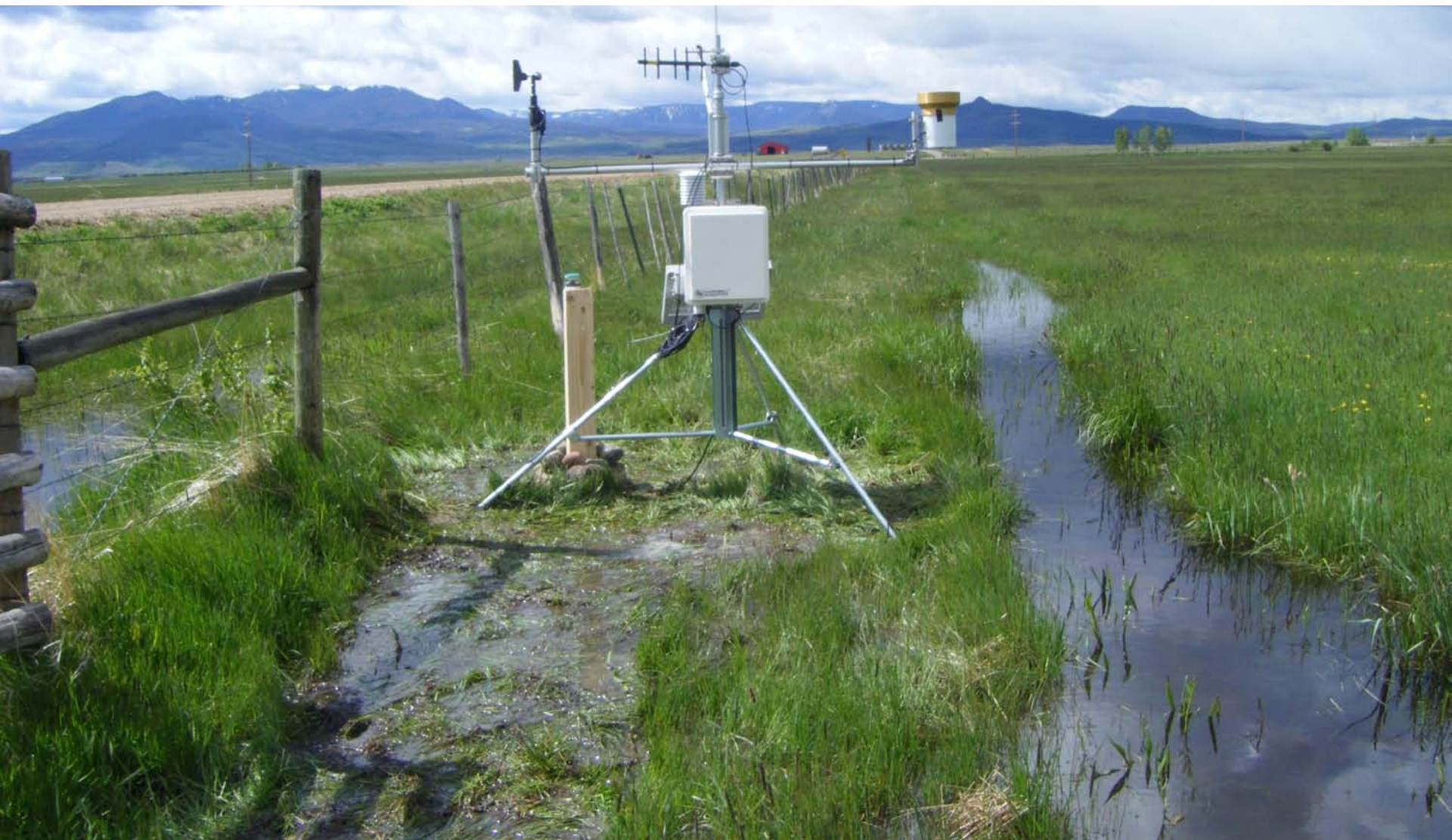
Rio Grande @ Del Norte, CO

USGS 08220000 RIO GRANDE NEAR DEL NORTE, CO.

Drainage Area: 1320 Square Miles, Length of Record: 112 Years

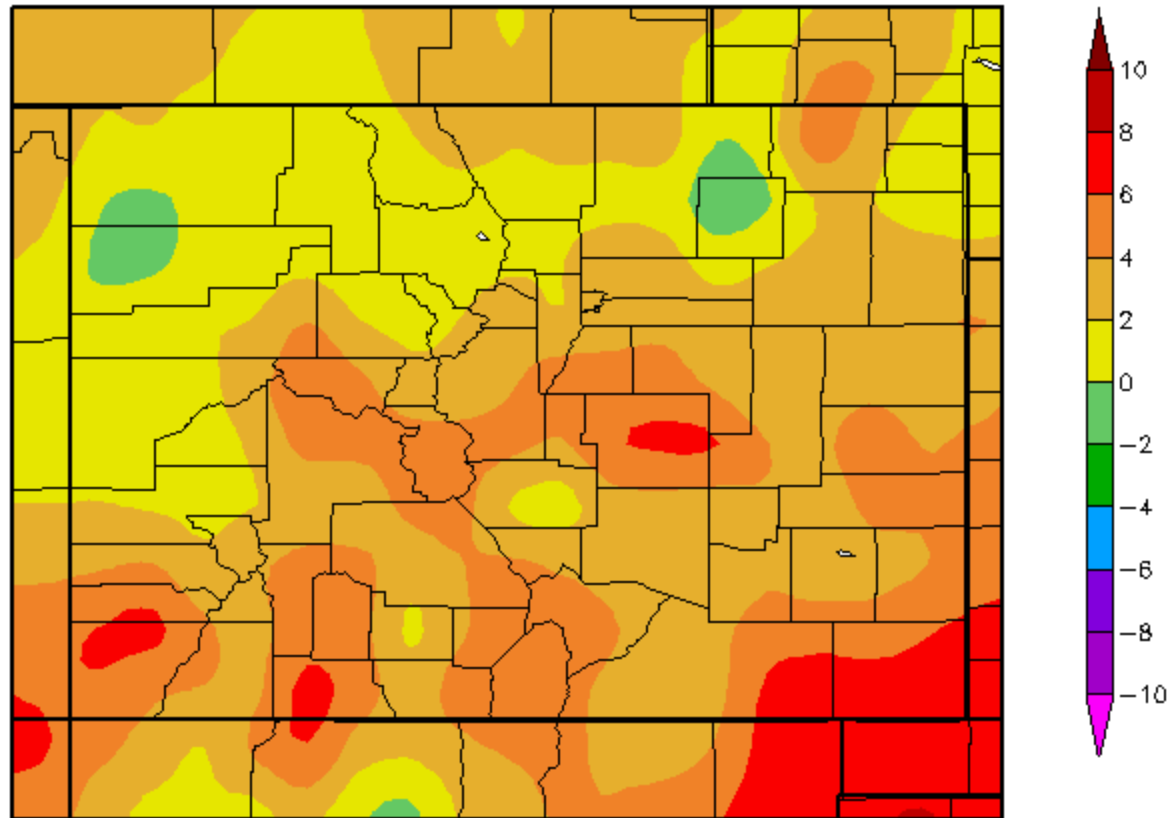


Water Demand



Temperature Departure from Normal 07/1/2011 – 07/11/2011

Departure from Normal Temperature (F)
7/1/2011 – 7/11/2011



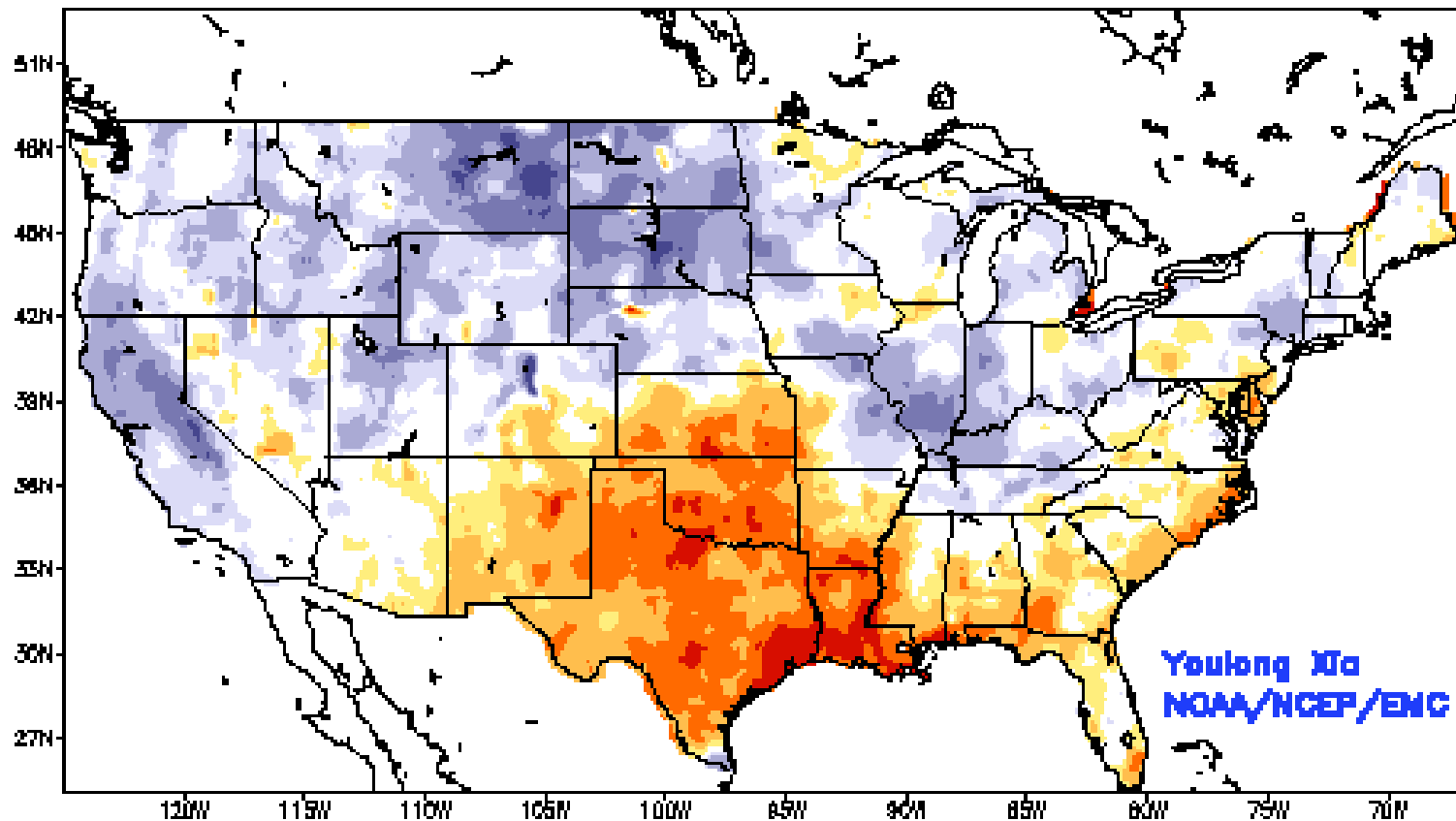
Generated 7/12/2011 at HPRCC using provisional data.

Regional Climate Centers

NLDAS Soil Moisture

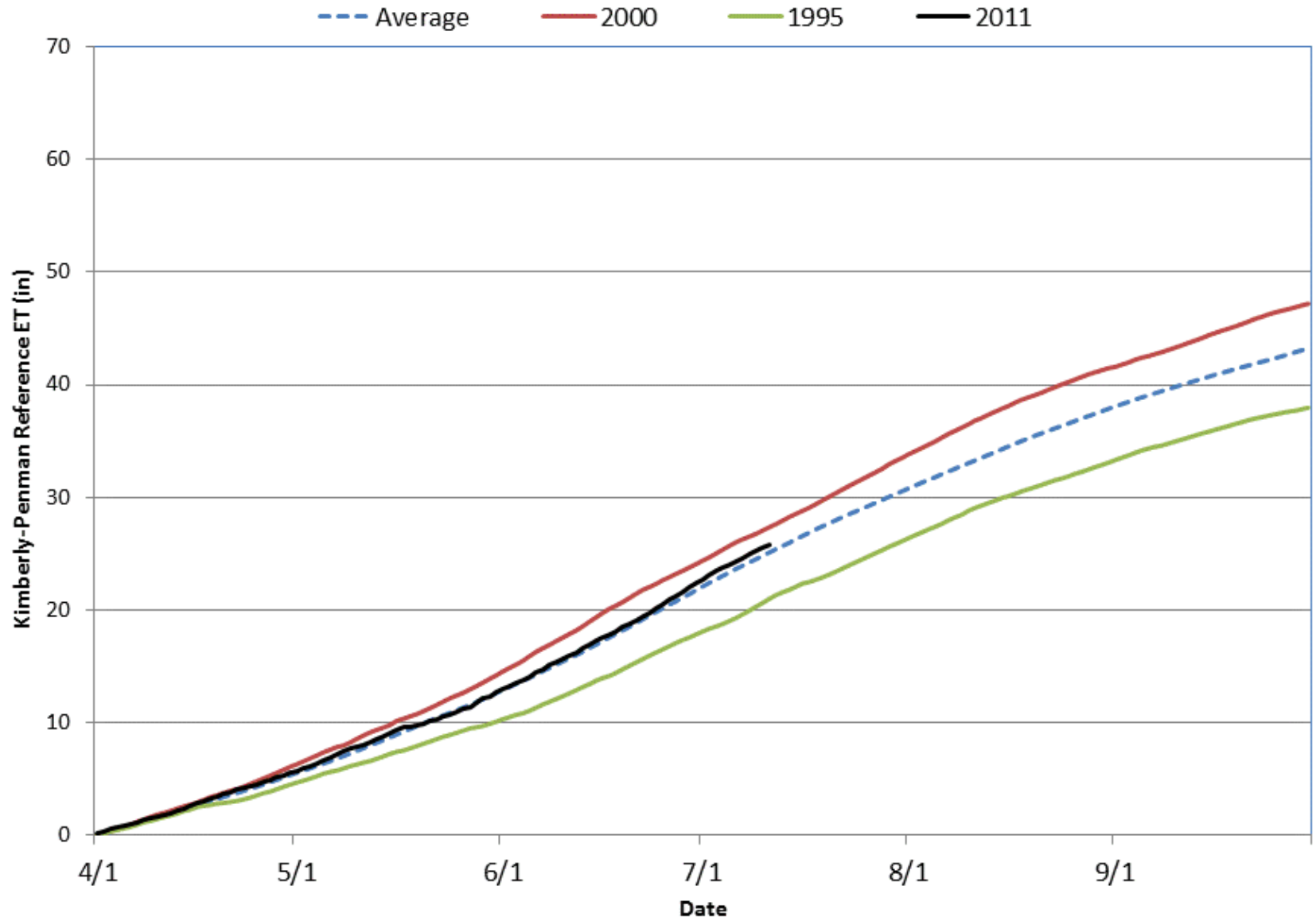
6 July 2011

Ensemble-Mean - Current Top 1M Soil Moisture Anomaly (mm)
NCEP NLDAS Products Valid: JUL 06, 2011



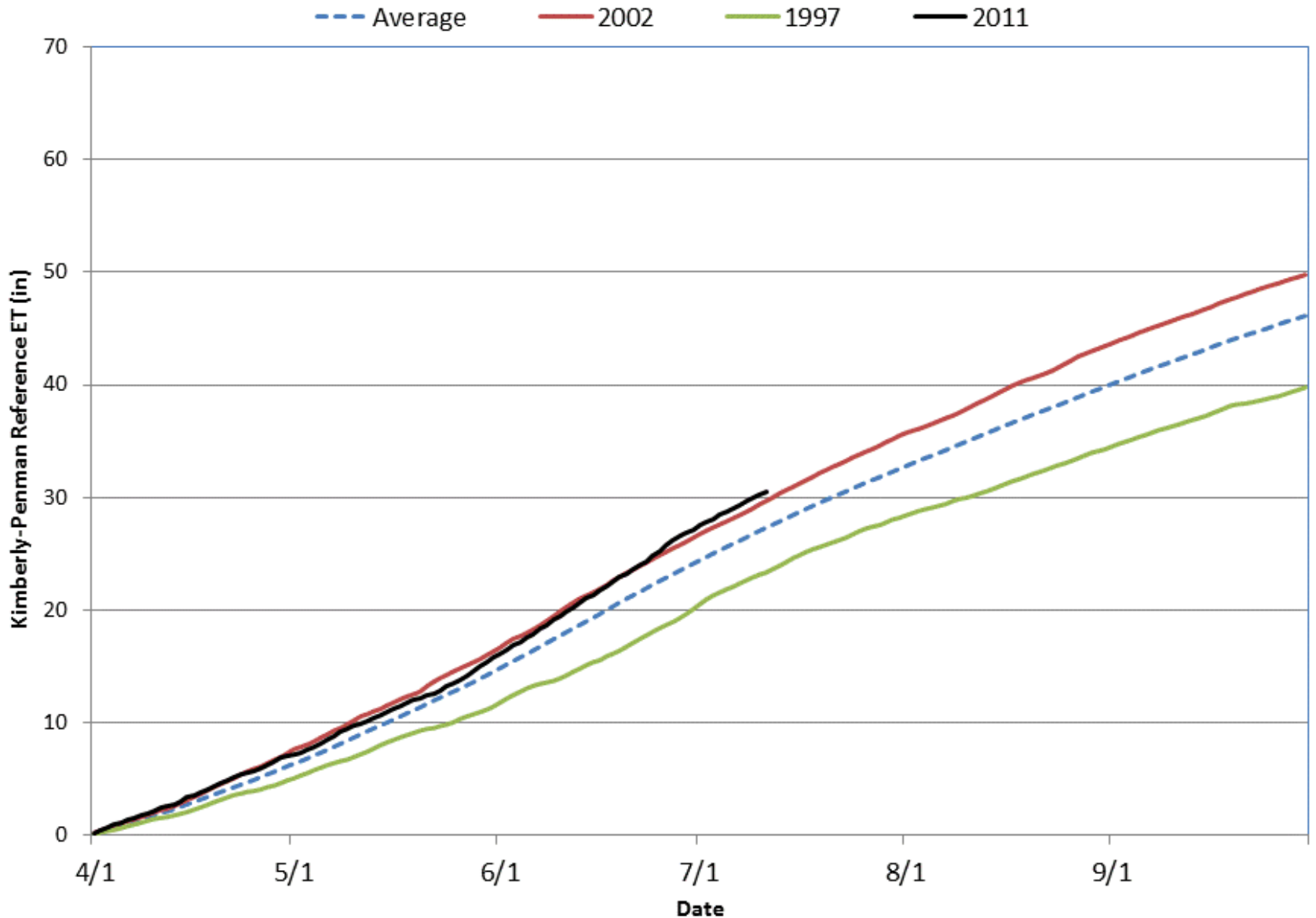
Cortez Reference ET – SW CO

CTZ01 Kimberly-Penman Reference ET (1992 - 2011)



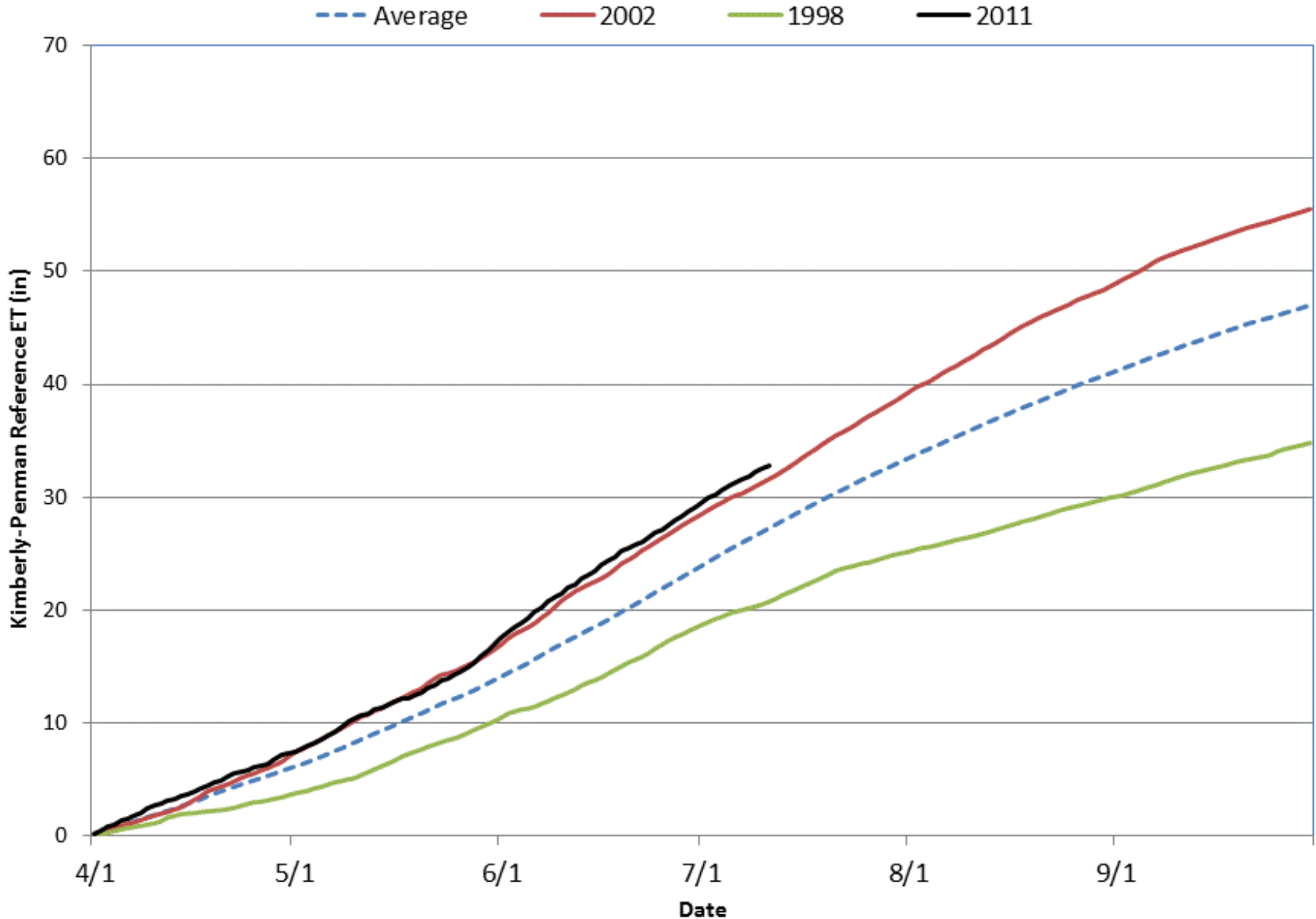
Center Reference ET - SLV

CTR01 Kimberly-Penman Reference ET (1994 - 2011)



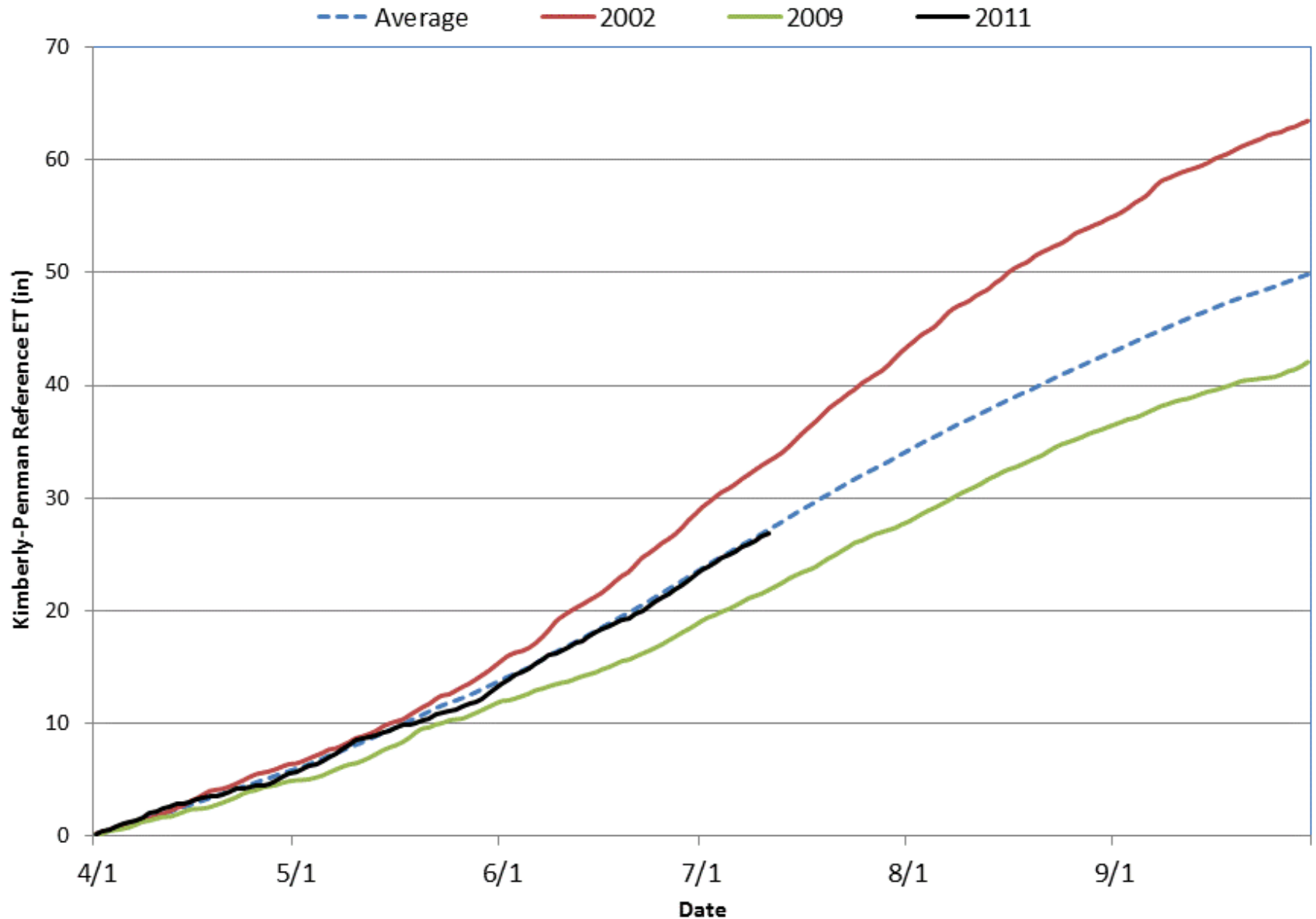
Avondale Reference ET – AR Basin

AVN01 Kimberly-Penman Reference ET (1993 - 2011)



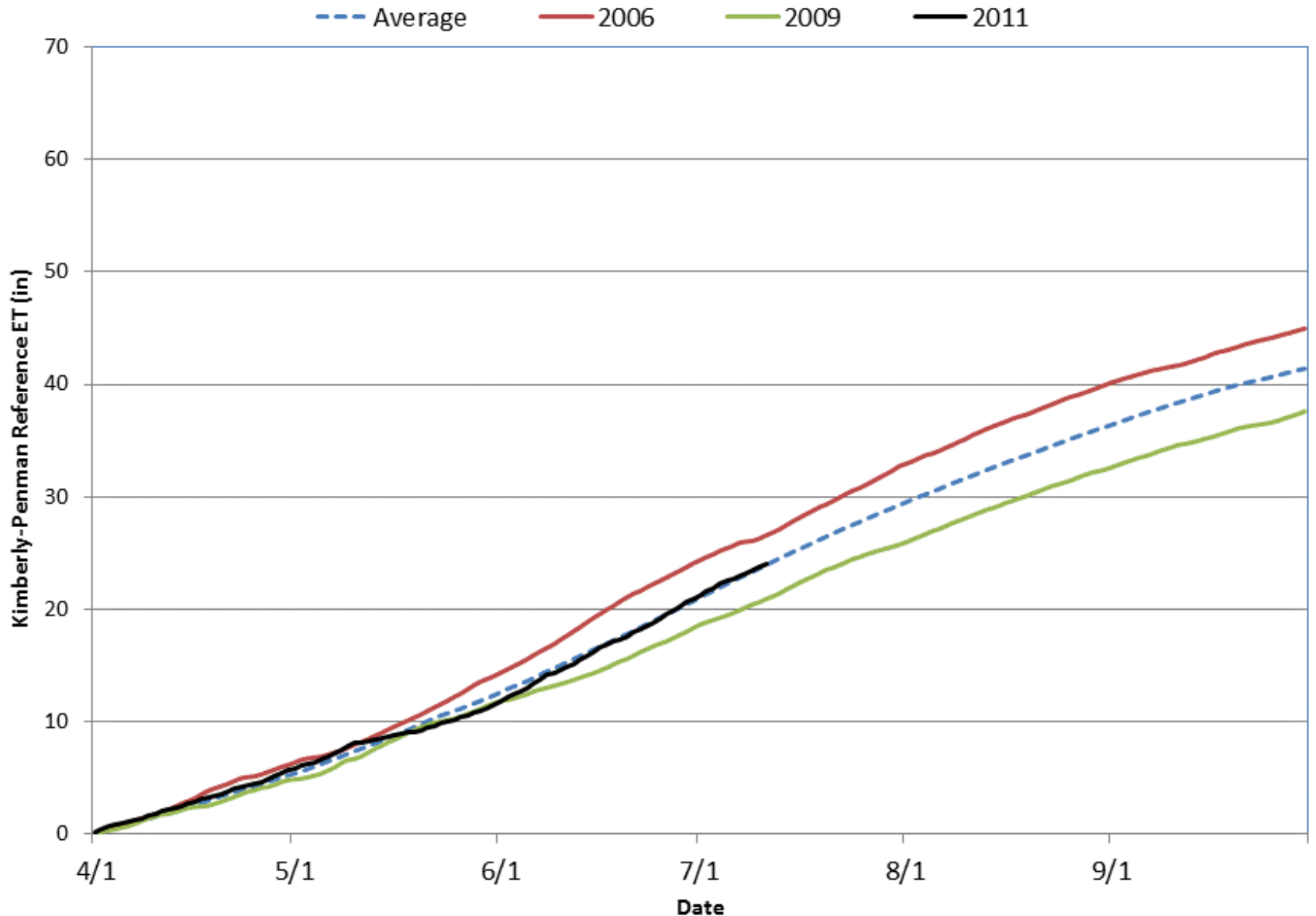
Idalia Reference ET – Eastern CO

IDL01 Kimberly-Penman Reference ET (1992 - 2011)



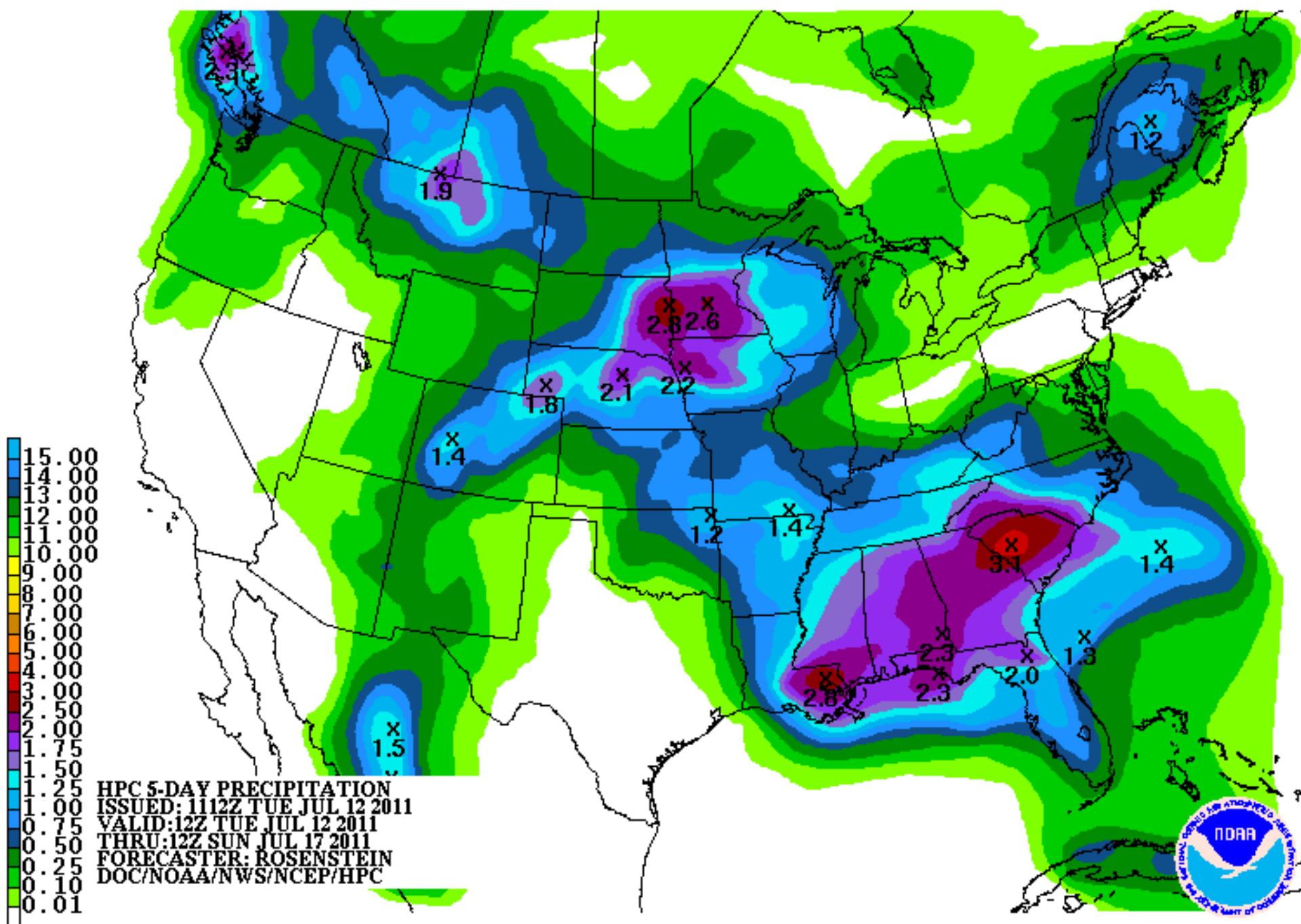
Lucerne Reference ET – N. Front Range

LCN01 Kimberly-Penman Reference ET (1992 - 2011)

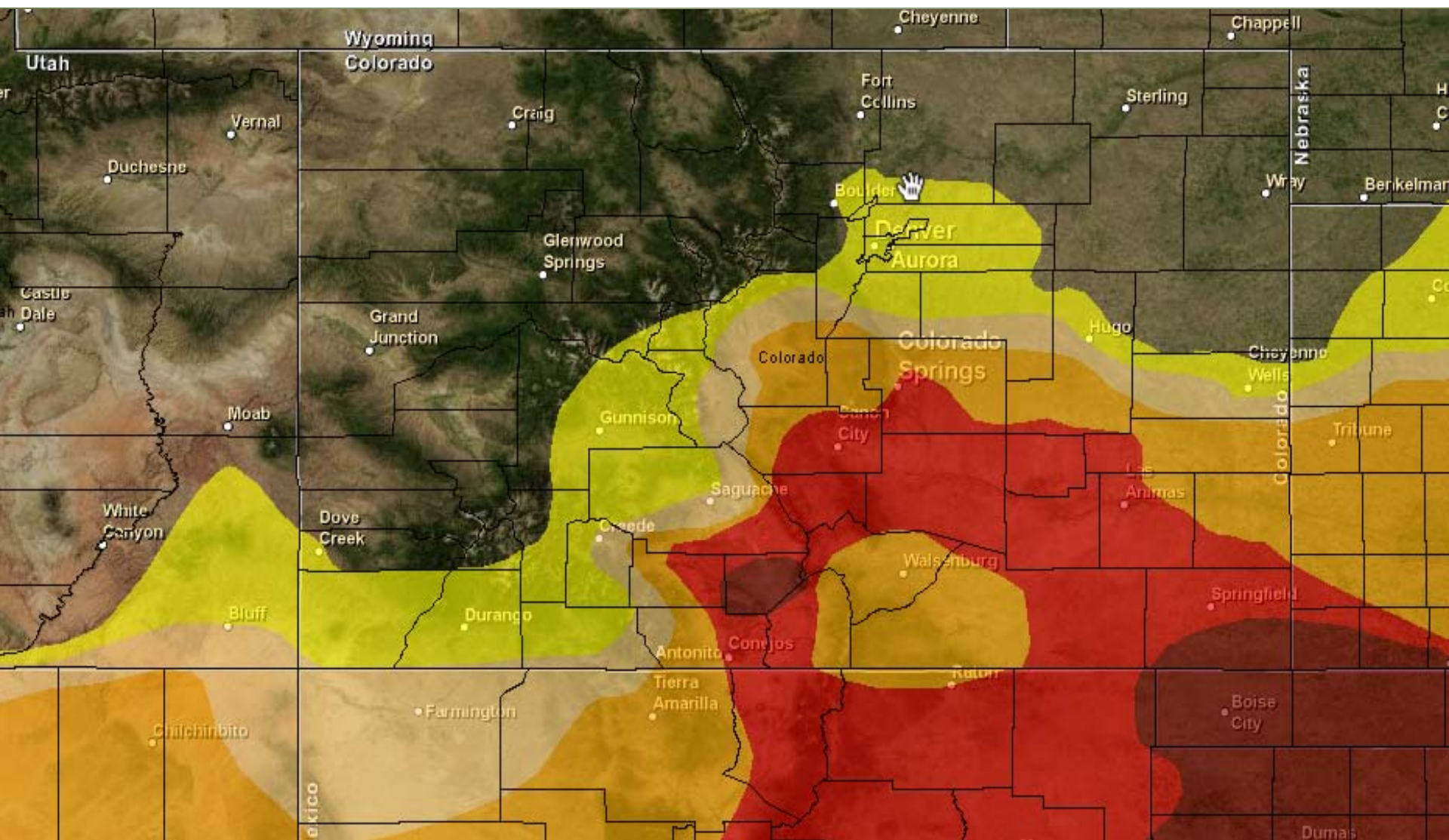


Precipitation Forecast





Recommendations



**O
F
N
I**



CONTACT:

COLORADO CLIMATE CENTER

COLORADO STATE UNIVERSITY

FORT COLLINS, CO 80523

970 - 491 - 8545

NIDIS - UPPER COLORADO BASIN PILOT PROJECT

F o r m o r e i n f o r m a t i o n